

INDEX	PAGE
2-Sided Shower	5-9
3-Sided Shower	12-16

Important

1. When you receive your product check the contents for any freight damage or defects.
2. If this is a custom order, the size will be on the outside of the box. Check that it is correct.
3. Advise Marni on 0800 4 MARNI if any damage has occurred or if you have any questions about the size within 8 hours of receiving the goods so this can be rectified.
4. Do not install faulty products, as this will void your warranty.



Health and Safety

- Unpack glass, stand on soft packing on floor and walls prior to assembly.
- Do not rework glass panels.
- Do not strike an edge or corner of glass.
- Use two persons where heavy glass lifting is required.
- Wear appropriate protective clothing and eye protection during installation.
- Mark gas/water pipe and electrical wire locations to ensure these are not touched.

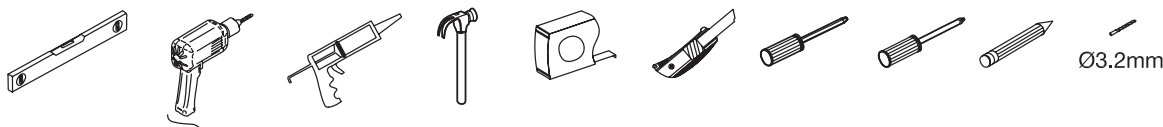


Attention

- **The tray base** must be installed level as this affects all shower alignments.
- **Wall Specifications** require a max variation of 3mm within shower height.
Installer must check the viability of install if outside of these specs.
- **3-Sided Alcove Showers:** Wall must be accurate, straight, and plumb. Refer pre-install guide.
- **Double studs for solid fixing of wall channels:** Positioned at tray outside edge



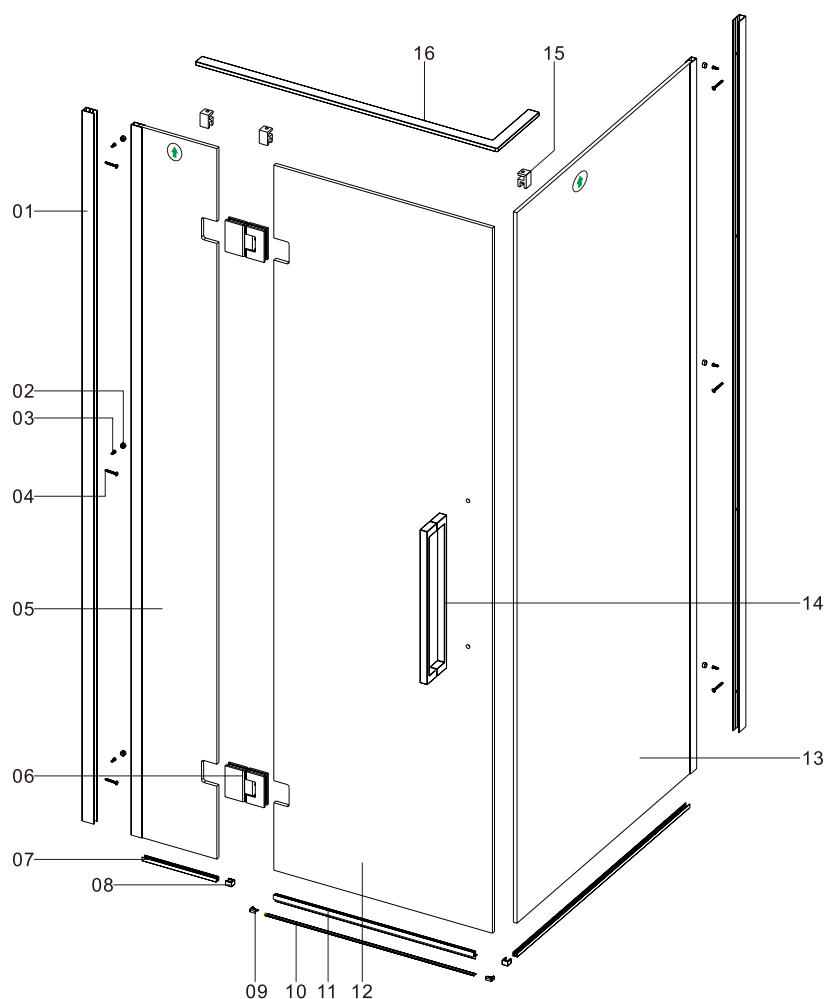
Tools Required



Warranty

- This covers faulty goods but not breakages. Visit marni.nz for information.
- Compliance with Specs and these instructions are essential for a valid warranty.

We recommend a skilled tradesman acquainted with shower installations to ensure the very best outcome.



COMPONENTS LIST

REFERENCE	DESCRIPTION	QUANTITY
1	Wall Profiles	2
2	Screw Caps	6
3	Screw ST4x10 Square Head	6
4	Screw ST4x30	6
5	Fixing Panels	1
6	Hinges	2
7	Bottom Profiles	2
8	Bottom Profile End Caps	2
9	Bottom Strip Cover Caps	2
10	Bottom Strip	1
11	Bottom Seal	1
12	Moving Panel	1
13	Return Panel	1
14	Handle	1
15	Glass Clamps	3
16	Top Support Bar	1

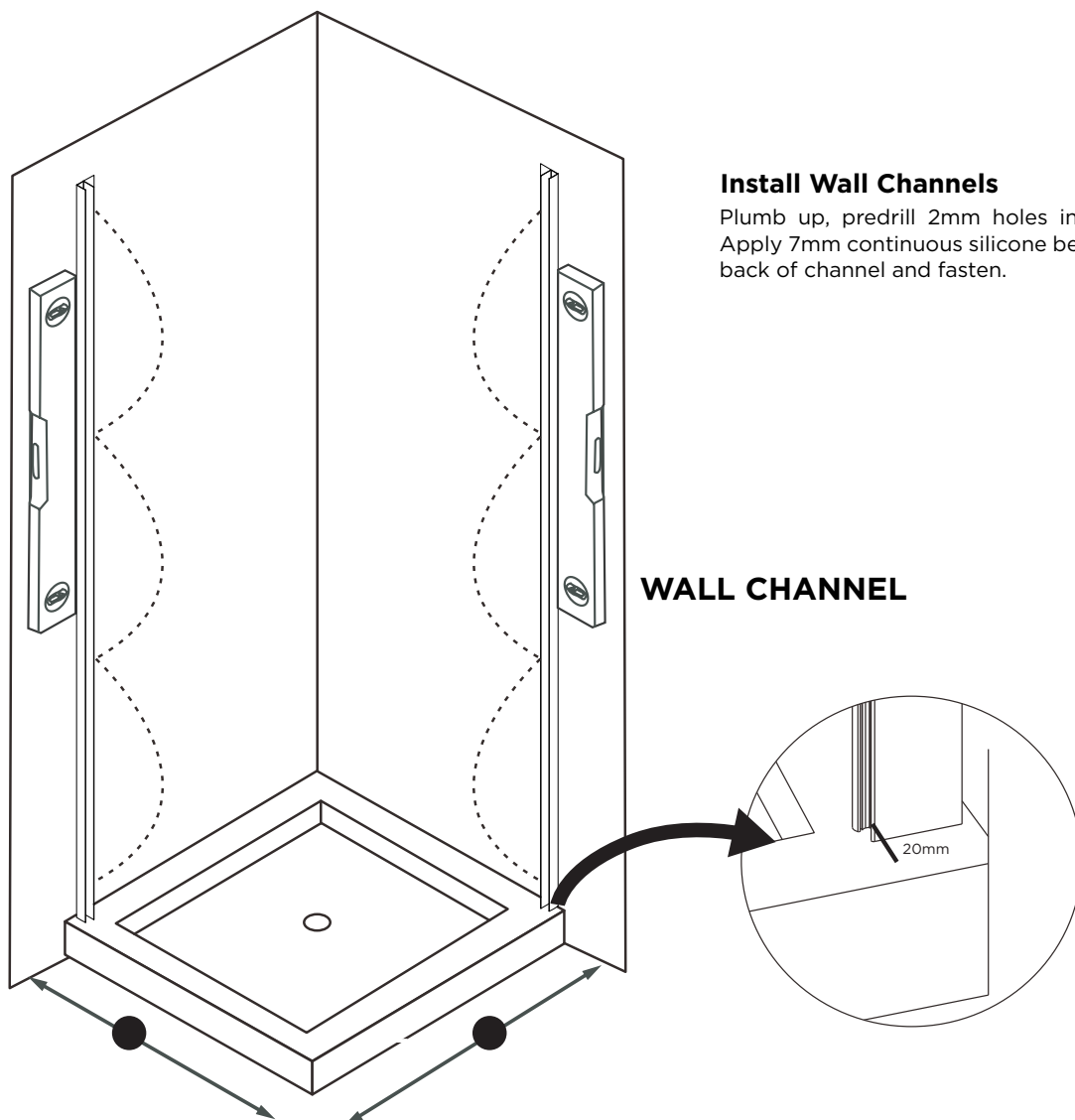
*Code for Replacement Screw Pack - 2 & 3 Sided Chrome & White

TRAY SIZE	DOOR SET	RETURN PANEL
915mm x 915mm	875mm to 890mm	872mm to 887mm
1000mm x 1000mm	960mm to 975mm	960mm to 975mm
1200mm x 915mm	1160mm to 1175mm	872mm to 887mm

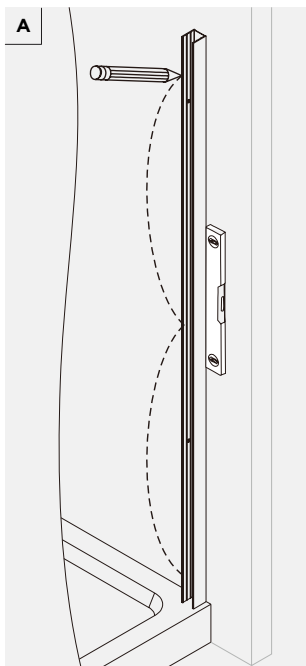
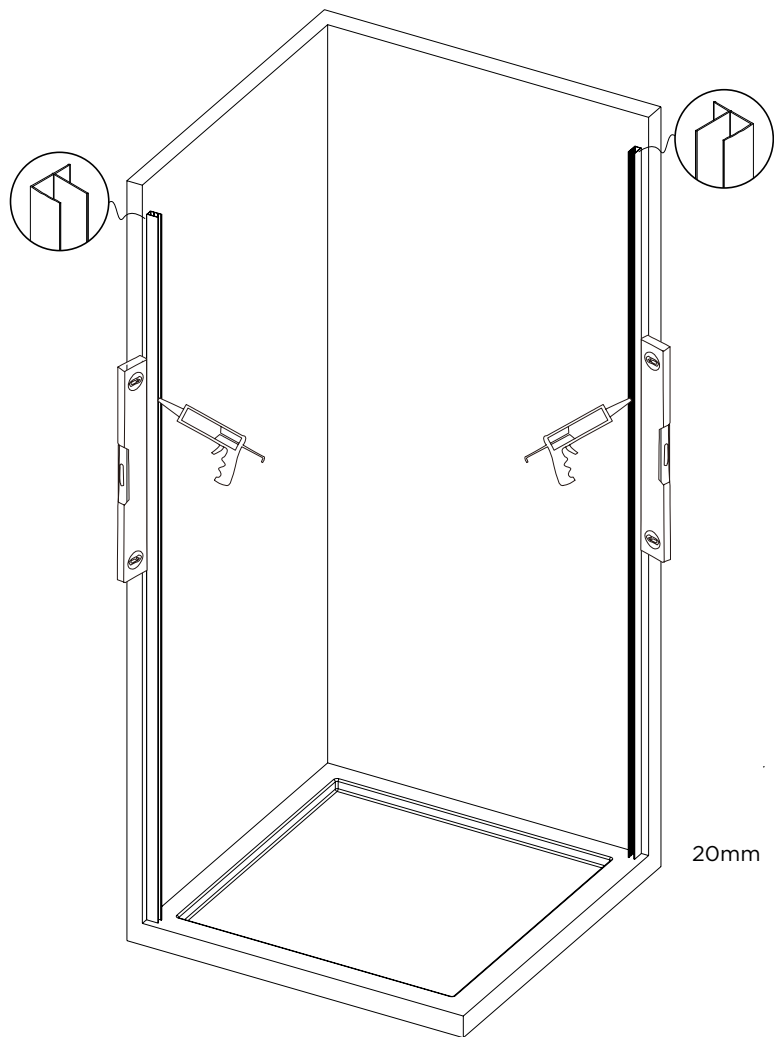
NOTE:

All measurements assume the floor is level, the walls are plumb, and flat. Assess your specific situation and any measures that may be needed to install this successfully.

Walls out of plumb will not allow for full minimum / maximum options.

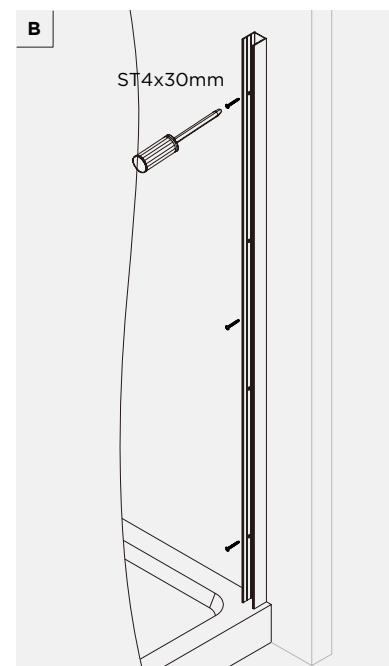
DIAGRAM A

1



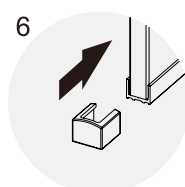
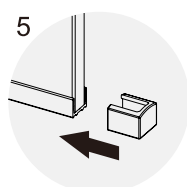
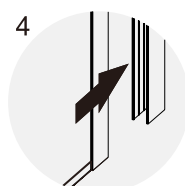
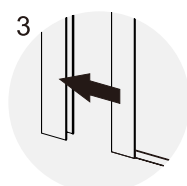
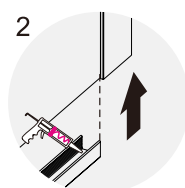
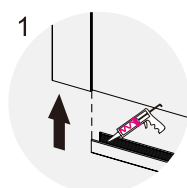
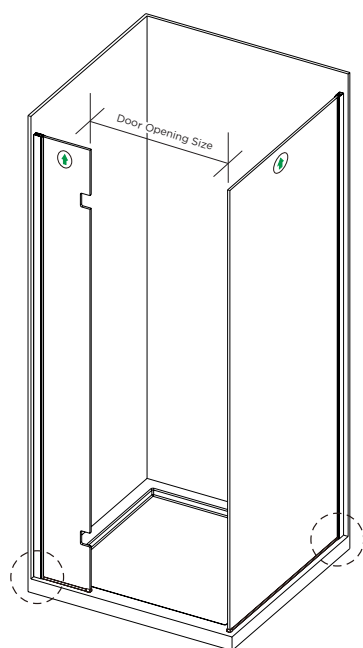
Mark Wall Profile

Acrylic Shower Layout



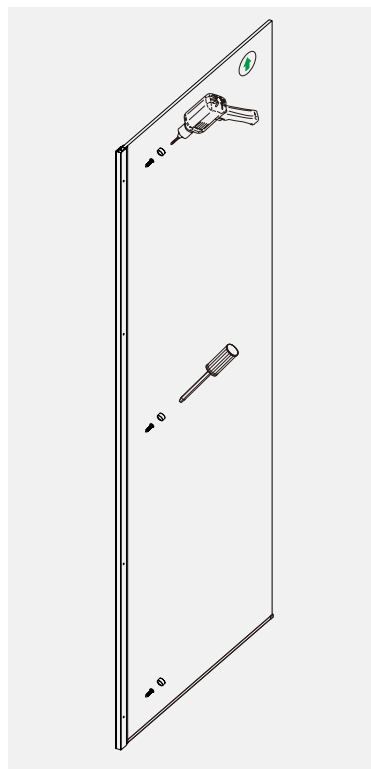
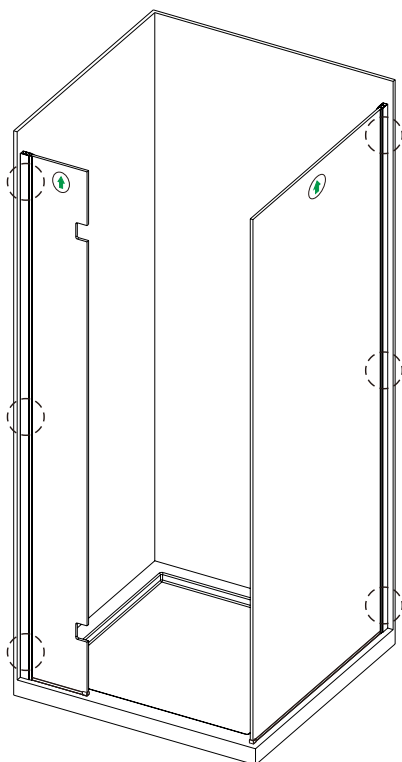
Fasten wall profiles for return and door panels.

2

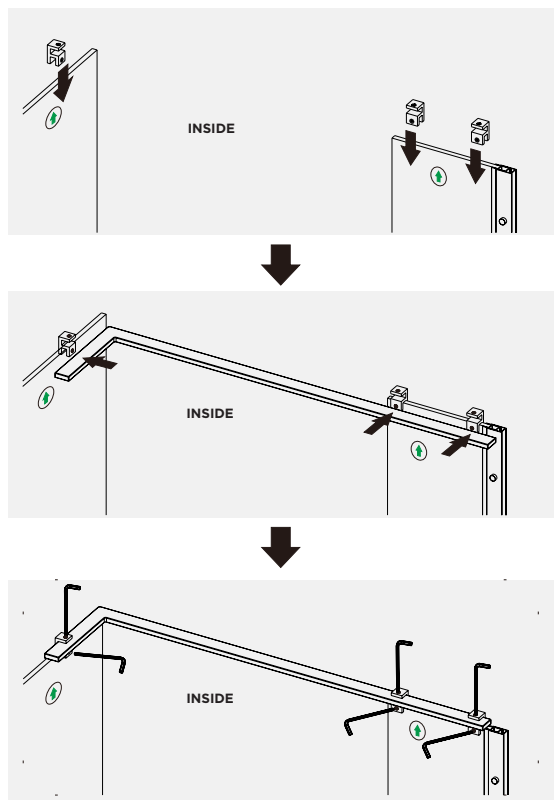
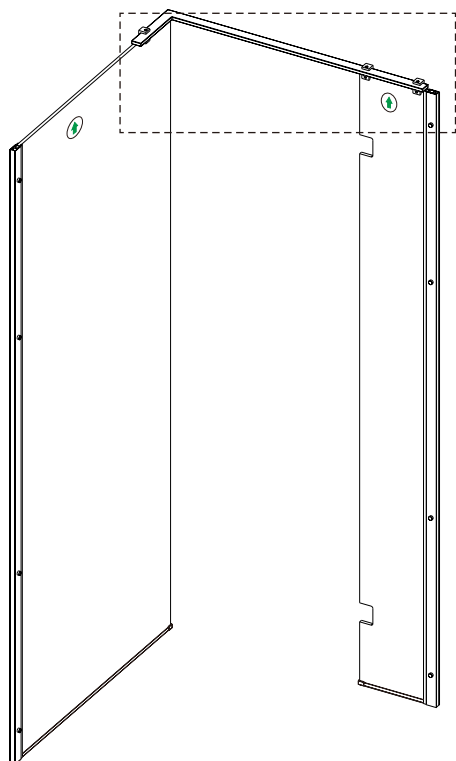


DOOR SIZE	DOOR OPENING SIZE
915x915	606mm
1000x1000	656mm
1200x915	656mm

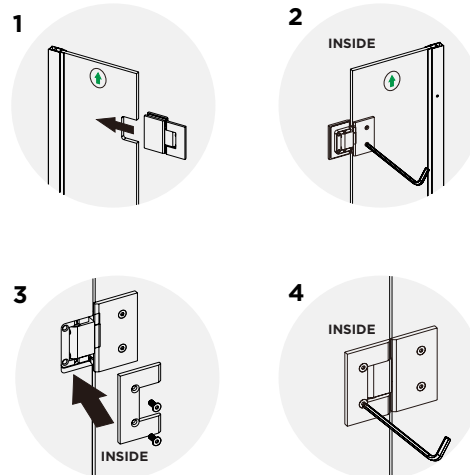
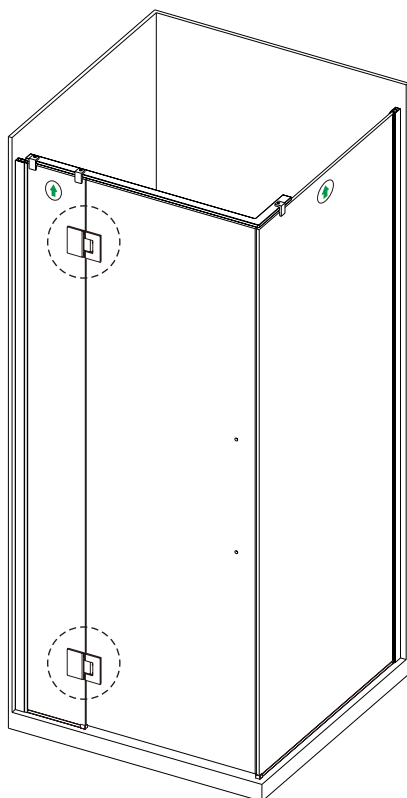
3



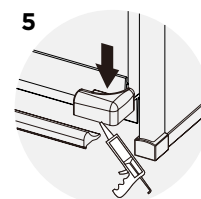
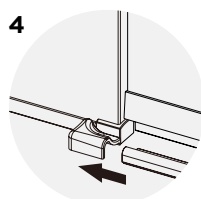
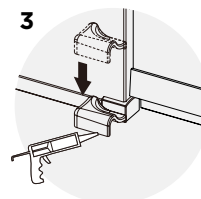
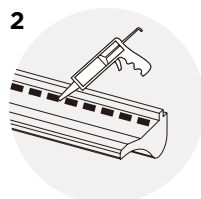
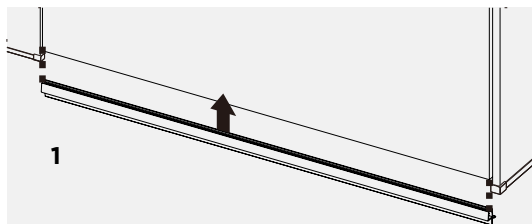
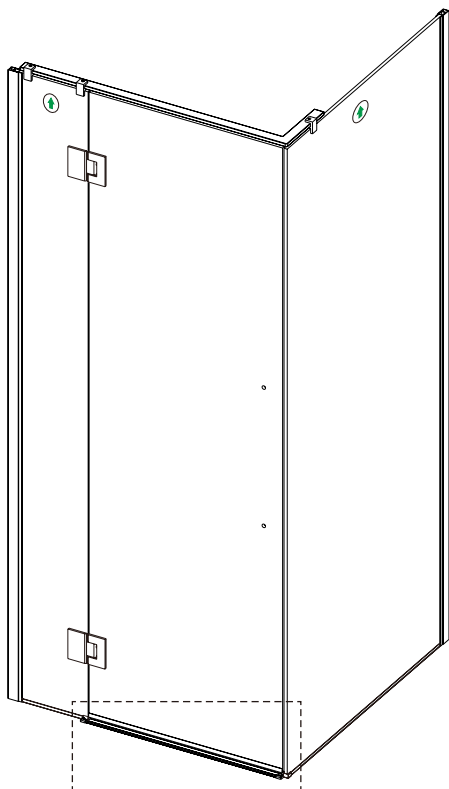
4



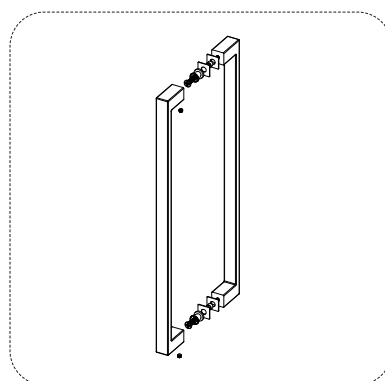
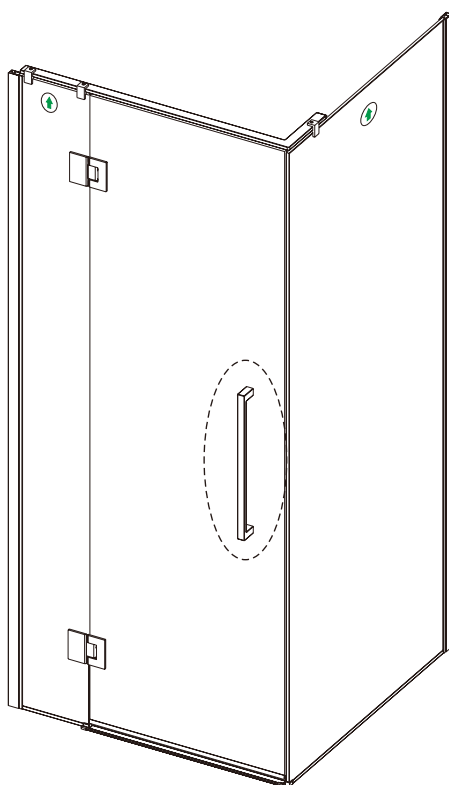
5



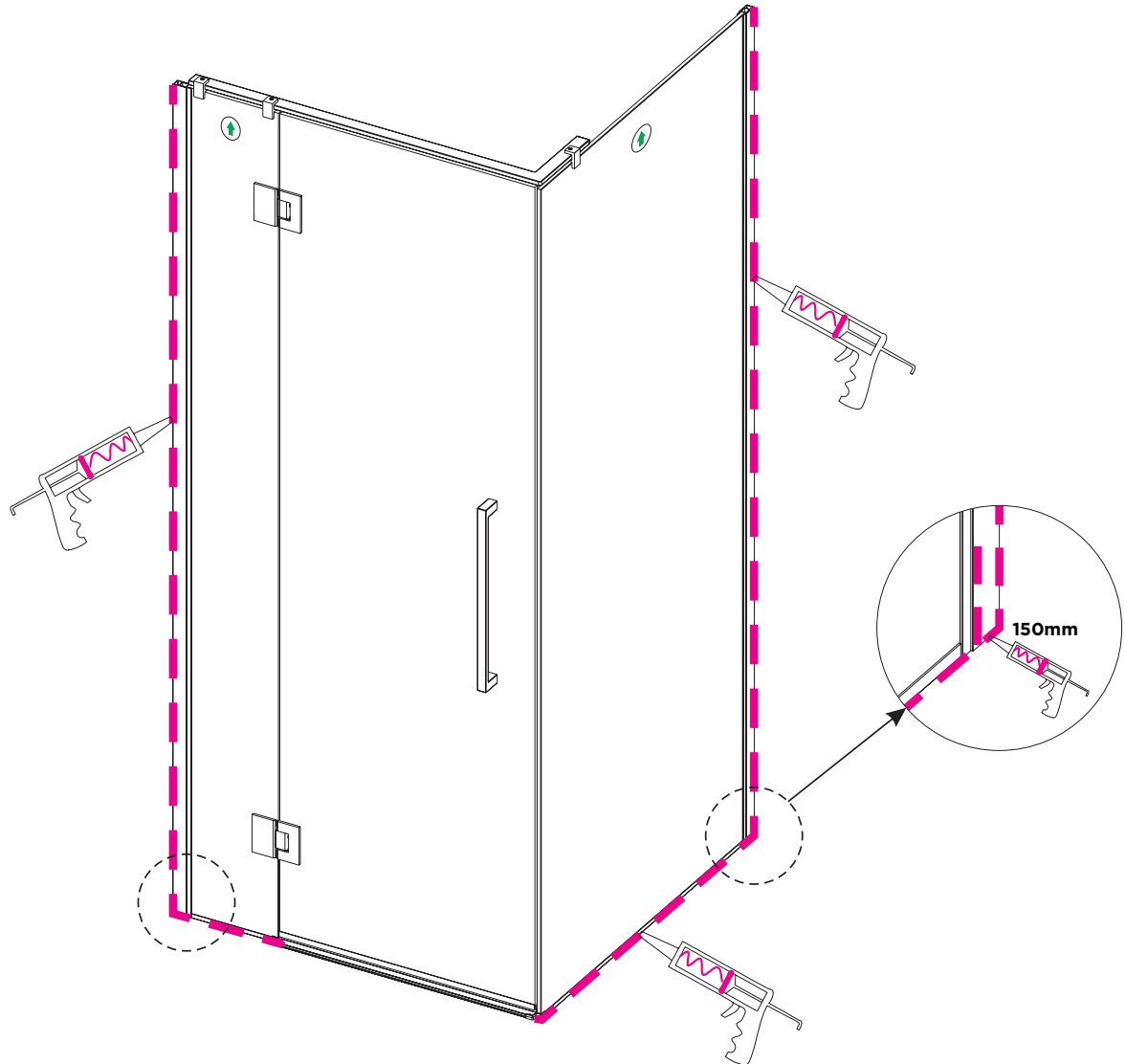
6



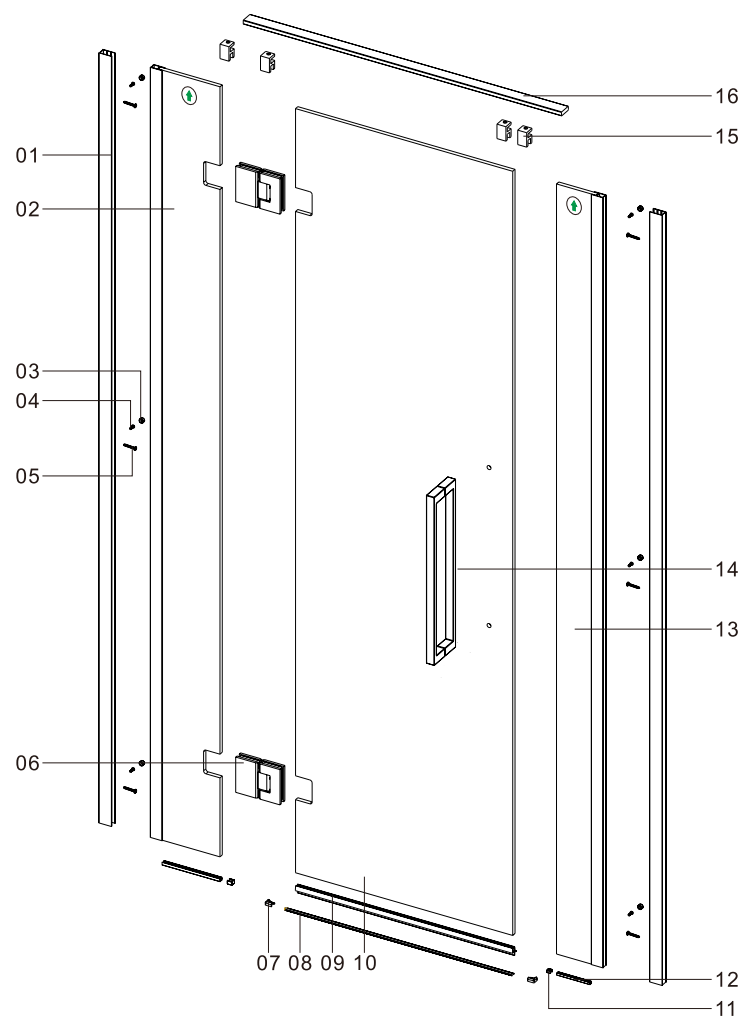
7



8



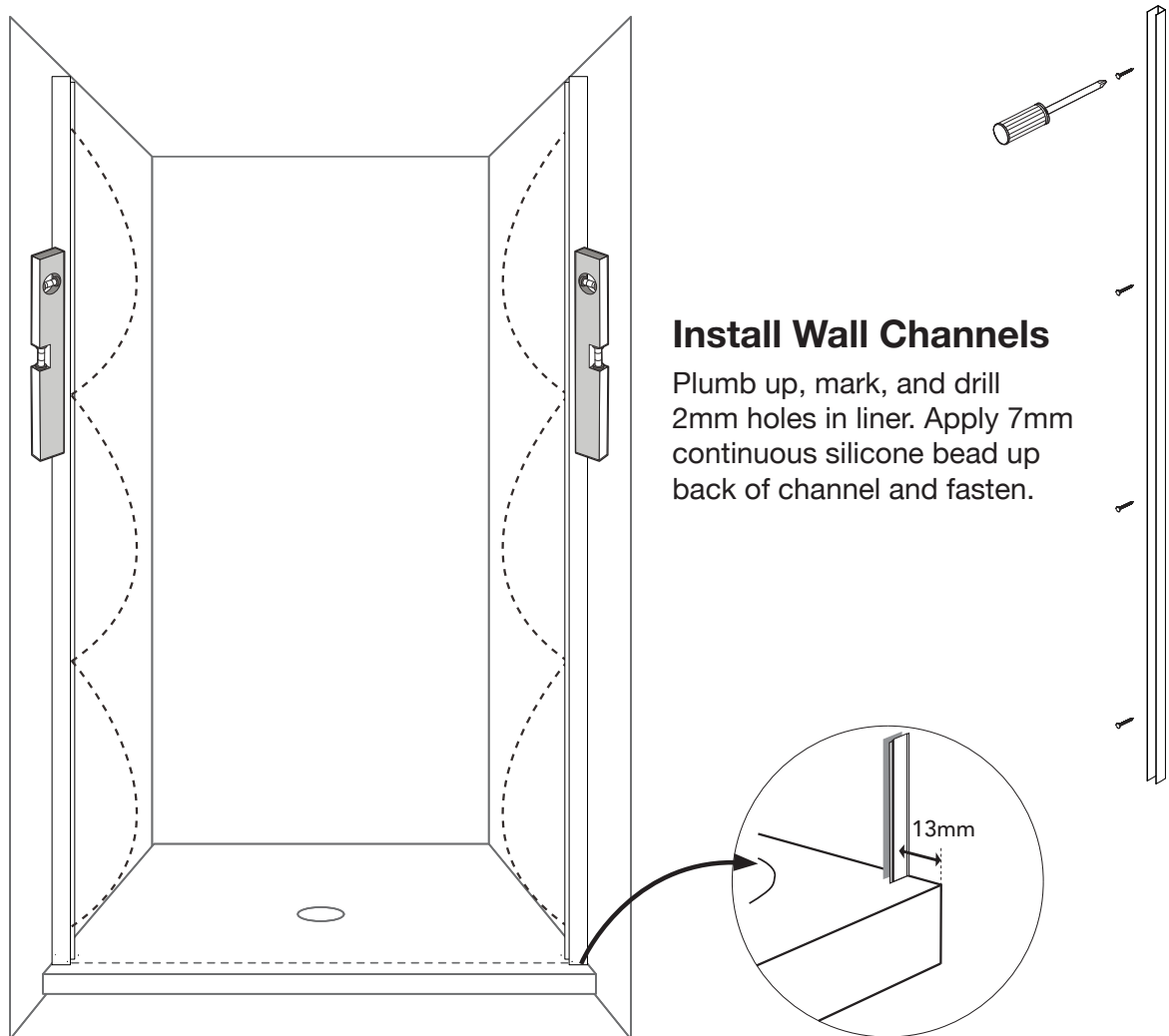
Allow 24 hours for silicone to dry before use.



COMPONENTS LIST

REFERENCE	DESCRIPTION	QUANTITY
1	Wall Profiles	2
2	Fixing Panel A	1
3	Screw Caps	6
4	Screw ST4x10	6
5	Screw ST4x30	6
6	Hinges	2
7	Bottom Strip Cover Caps	2
8	Bottom Strip	1
9	Bottom Seal	1
10	Moving Panel	1
11	Bottom Profile End Caps	2
12	Bottom Profiles	2
13	Fixing Panels B	1
14	Handle	1
15	Glass Clamps	3
16	Top Bar	1

*Code for Replacement Screw Pack - 2 & 3 Sided Chrome & White

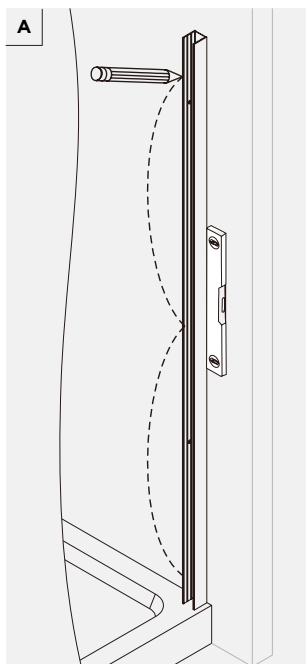
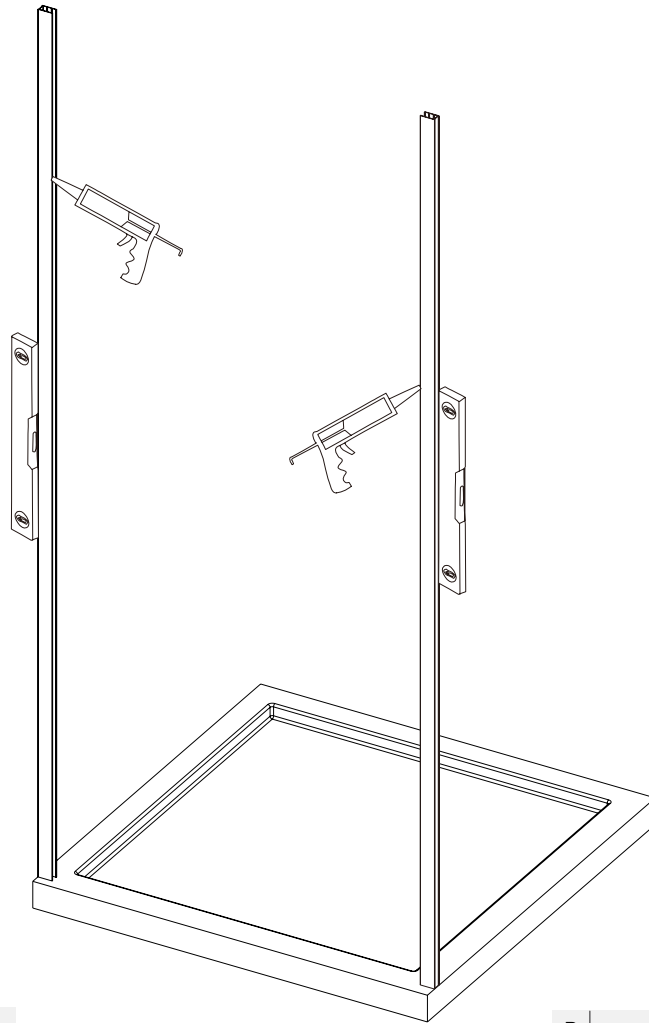


TRAY SIZE	GIB TO GIB SIDE TO SIDE	LINER TO LINER SIDE TO SIDE	DOOR SET MIN-MAX
900	880mm	874mm	860mm to 890mm
1000	980mm	974mm	960mm to 990mm
1200	1180mm	1174mm	1160mm to 1190mm

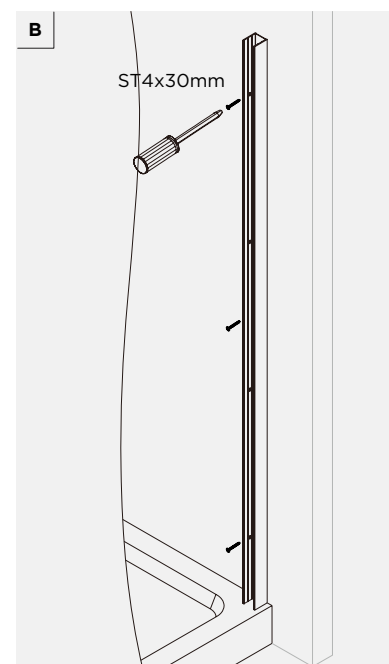
NOTE:

All measurements assume the floor is level, the walls are plumb, and flat. Assess your specific situation and any measures that may be needed to install this successfully.

1



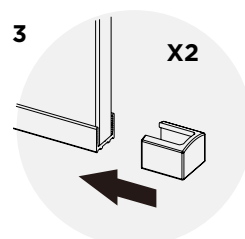
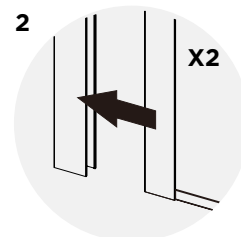
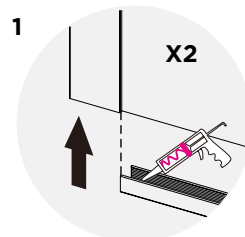
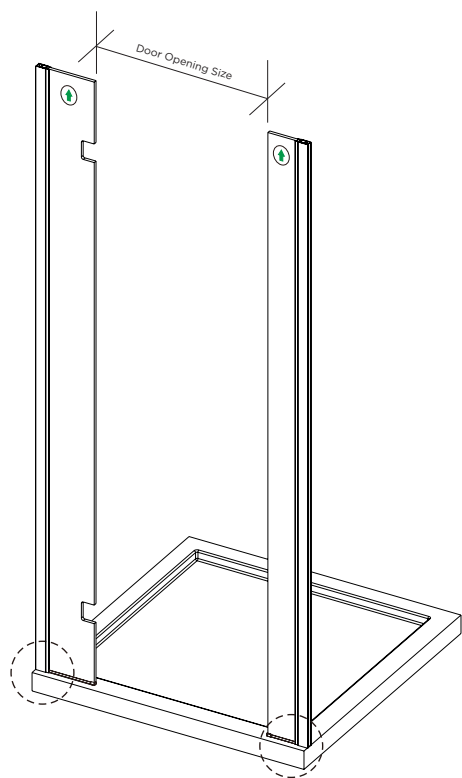
Mark Wall Profile



Fasten wall profiles for return and door panels.

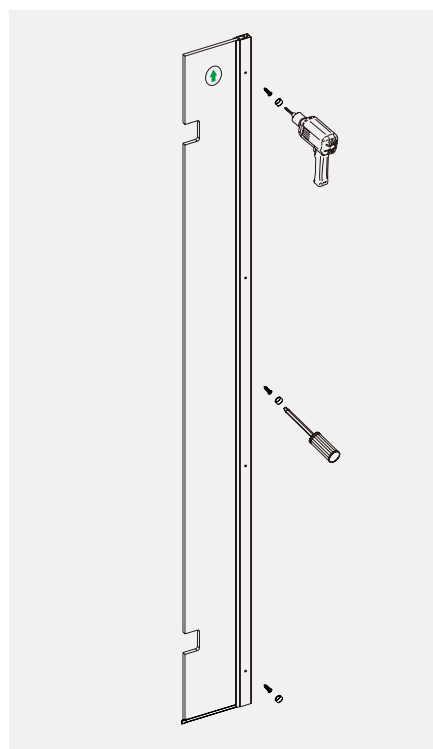
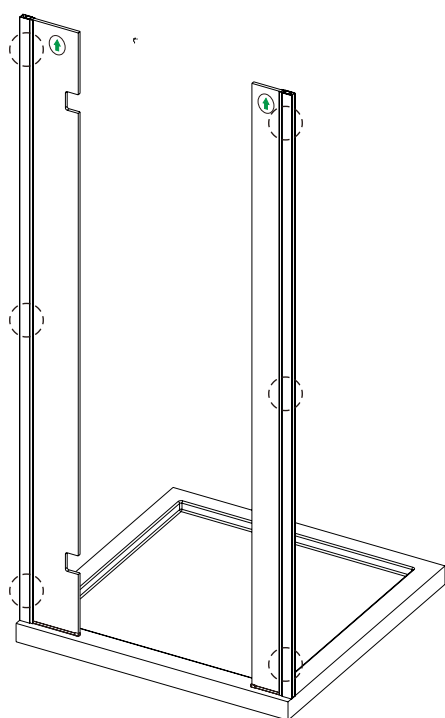
Acrylic Shower Layout

2

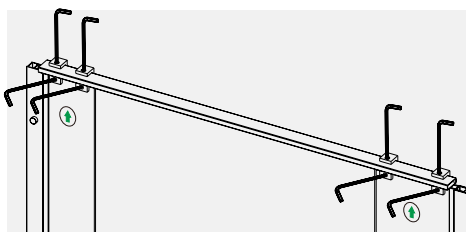
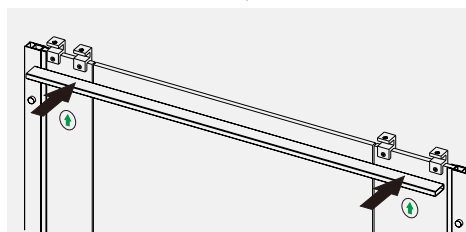
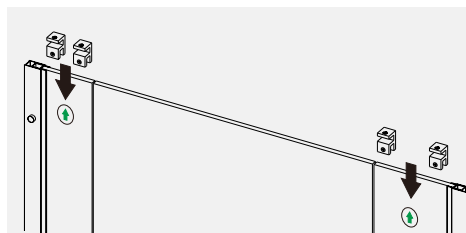
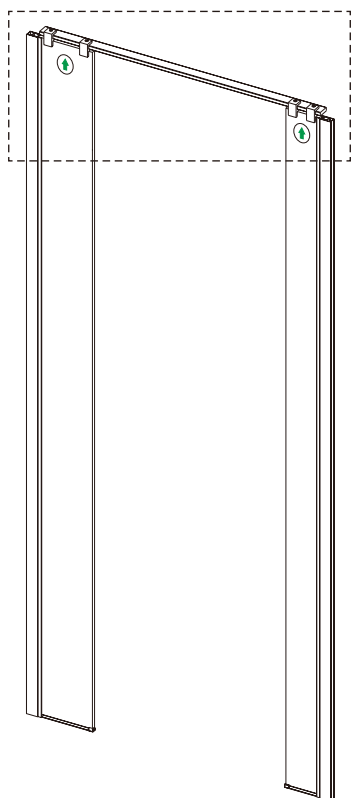


DOOR SIZE	DOOR OPENING SIZE
900mm	556mm
1000mm	656mm
1200mm	656mm

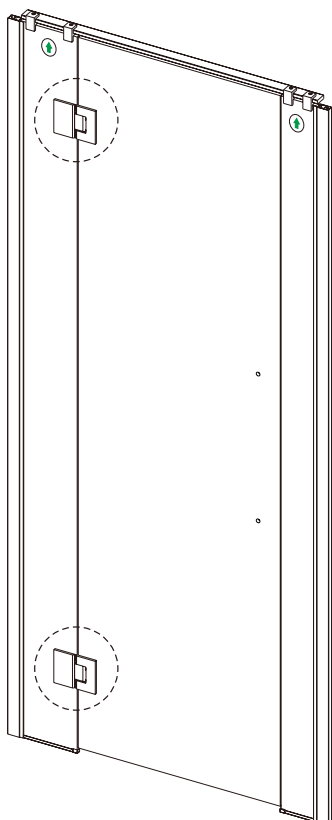
3



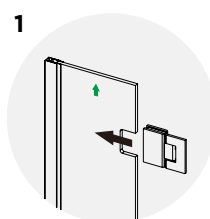
4



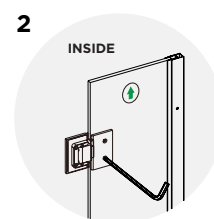
5



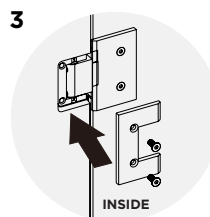
1



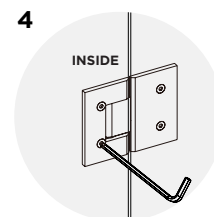
2



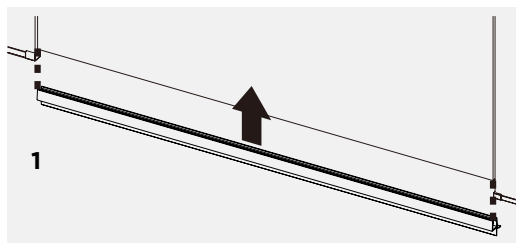
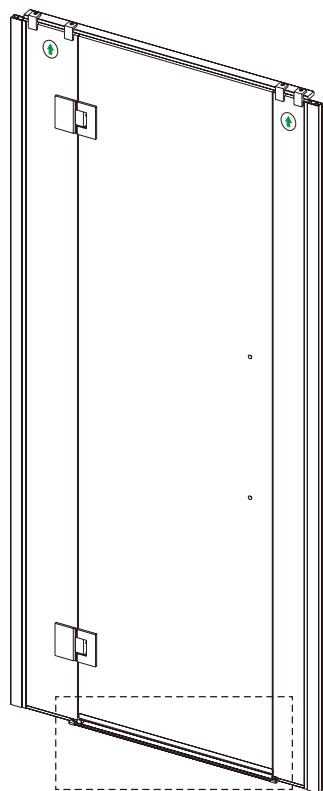
3



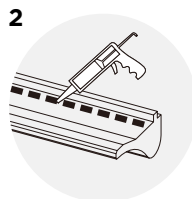
4



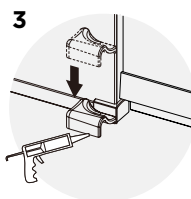
6



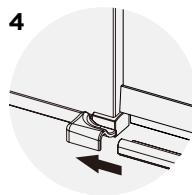
2



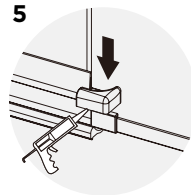
3



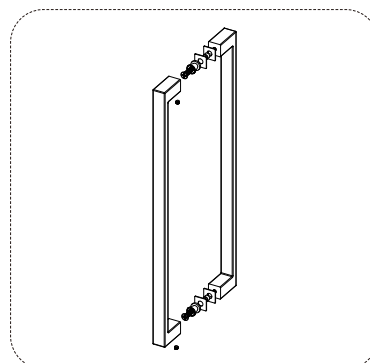
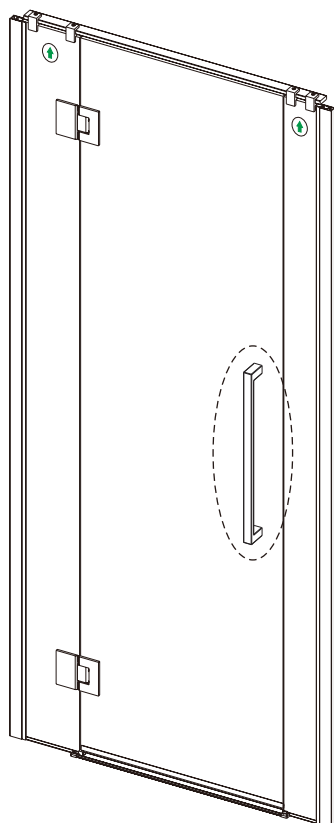
4



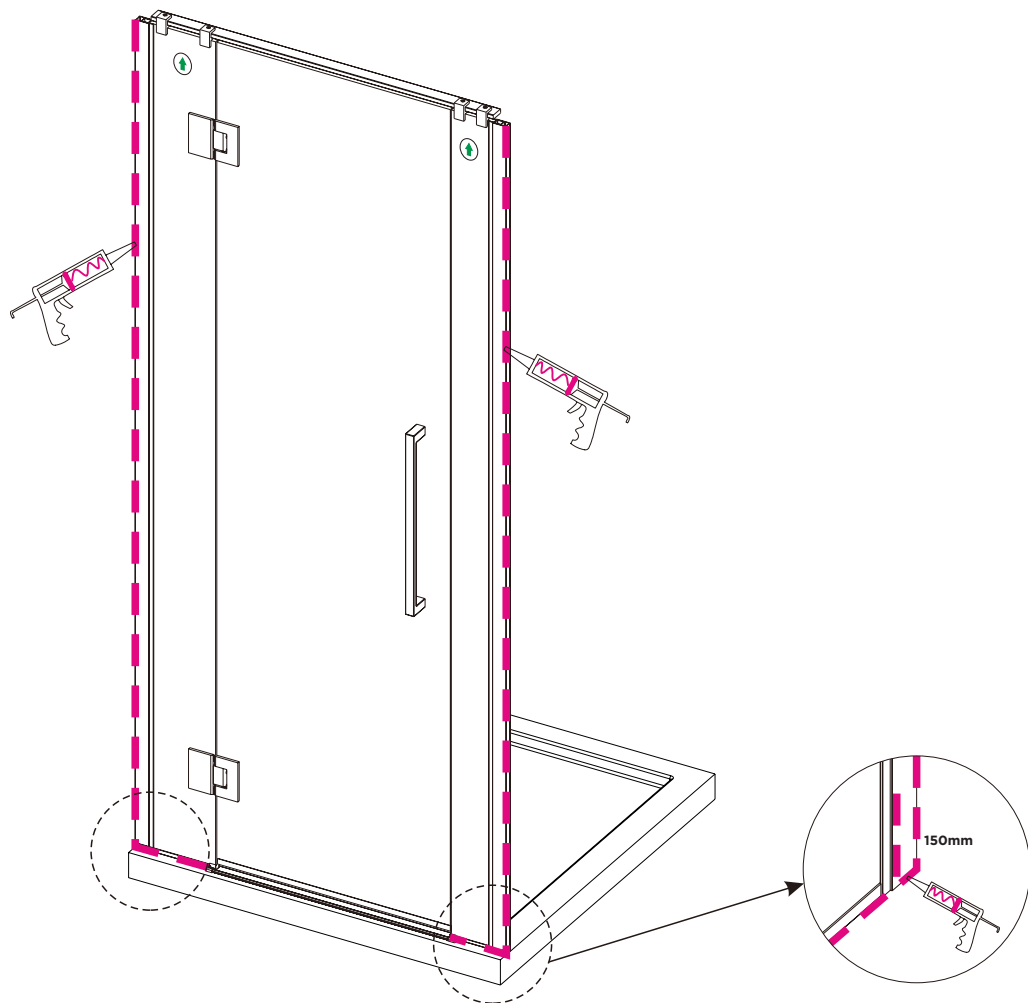
5



7



8



Allow 24 hours for silicone to dry before use.