



INDEX	PAGE
2-Sided Shower	5-12
3-Sided Shower	13-22

Important

1. When you receive your product check the contents for any freight damage or defects.
2. If this is a custom order, the size will be on the outside of the box. Check that it is correct.
3. Advise Marni on 0800 4 MARNI if any damage has occurred or if you have any questions about the size within 8 hours of receiving the goods so this can be rectified.
4. Do not install faulty products, as this will void your warranty.



Health and Safety

- Unpack glass, stand on soft packing on floor and walls prior to assembly.
- Do not rework glass panels.
- Do not strike an edge or corner of glass.
- Use two persons where heavy glass lifting is required.
- Wear appropriate protective clothing and eye protection during installation.
- Mark gas/water pipe and electrical wire locations to ensure these are not touched.

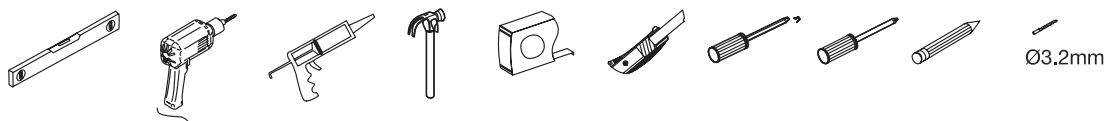


Attention

- **The tray base** must be installed level as this affects all shower alignments.
- **Wall Specifications** require a max variation of 3mm within shower height.
Installer must check the viability of install if outside of these specs.
- **3-Sided Alcove Showers:** Wall must be accurate, straight, and plumb. Refer pre-install guide.
- **Double studs for solid fixing of wall channels:** Positioned at tray outside edge



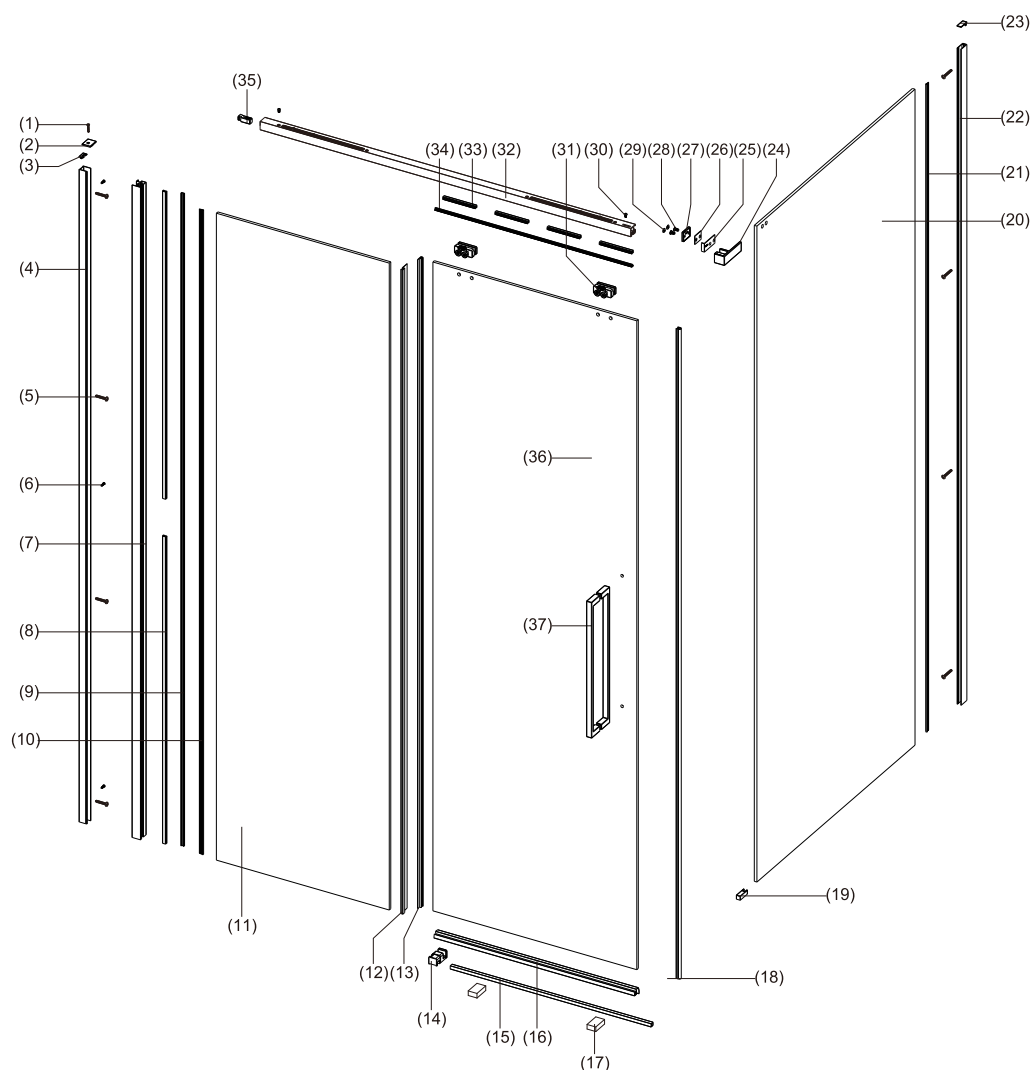
Tools Required



Warranty

- This covers faulty goods but not breakages. Visit marni.nz for information.
- Compliance with Specs and these instructions are essential for a valid warranty.

We recommend a skilled tradesman acquainted with shower installations to ensure the very best outcome.



COMPONENTS LIST

REFERENCE	DESCRIPTION	QUANTITY
1	Screw ST3.5x30	1
2	Wall Profile Cover Caps L&R	2
3	Wall Profile Cover Cap	1
4	Wall Profile A	1
5	Screws ST4x35	8
6	Screws ST4x8	3
7	Upright Profile	1
8	Cover Strip Seals A	2
9	Cover Strip A	1
10	Wedge Gasket Seal	1
11	Fixed Panel	1
12	Fixed Panel Seal	1
13	Moving Panel Seal	1
14	Bottom Guide Block	1
15	Drip Strip	1

COMPONENTS LIST

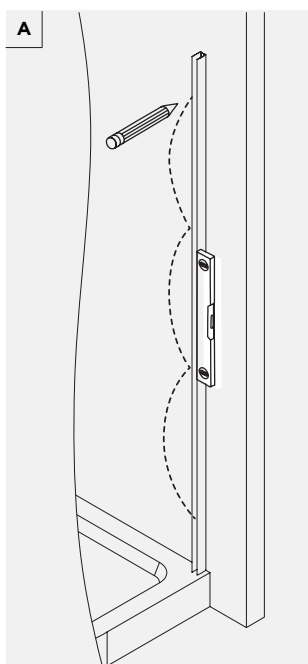
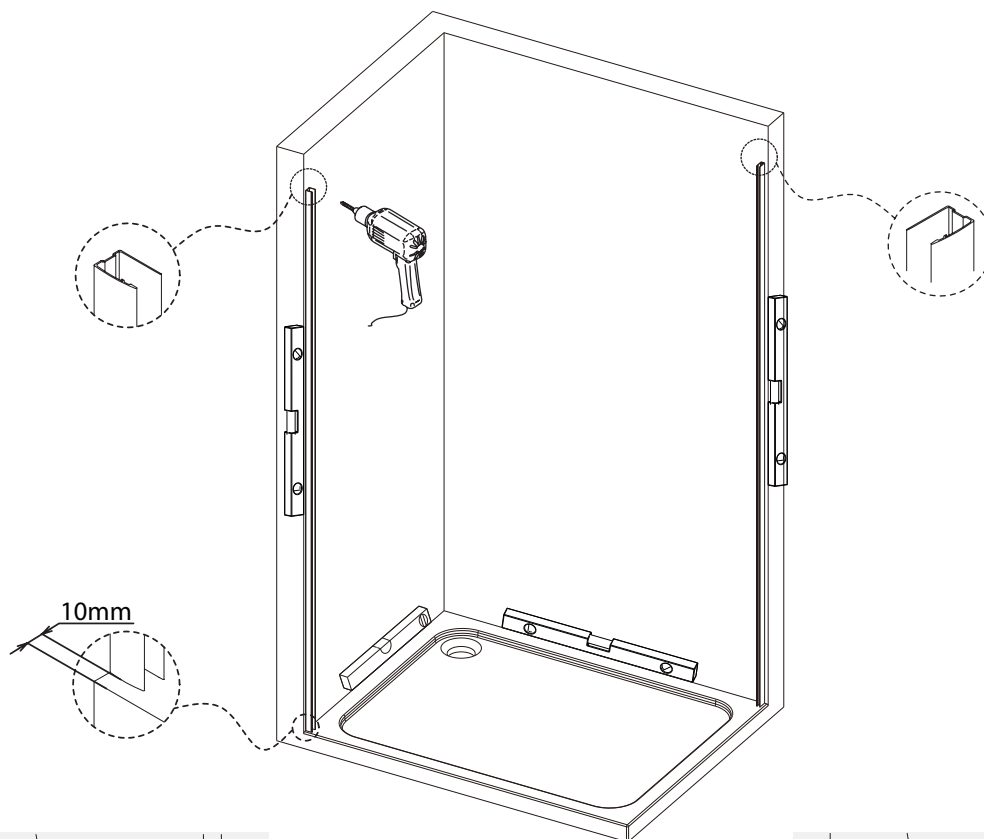
REFERENCE	DESCRIPTION	QUANTITY
16	Bottom Seal	1
17	Blocks	2
18	Drip Strip End Cap L&R	1
19	Wall Profile B	2
20	Side Panel	1
21	Wedge Gasket Seal	1
22	Wall Profile	1
23	Wall Profile Cover Cap	1
24	Corner Bracket L&R	2
25	Corner Bracket Washer A	2
26	Corner Bracket Washer B	1
27	Corner Bracket Plate	1
28	Screws M5x12	2
29	Screws Cover Caps	2
30	Round Screws M4x8	2
31	Top Rollers	2
32	Guide Rail	1
33	Cover Strip Seals B	4
34	Cover Strip B	1
35	Adjustment Bracket	1
36	Moving Panel	1
37	Handle	1

DOOR & RETURN	DOOR SET	RETURN PANEL
1200mm*800mm	1170mm (Minimum) to 1190mm (Maximum)	776mm (Minimum) to 791mm (Maximum)
1200mm*915mm	1170mm (Minimum) to 1190mm (Maximum)	891mm (Minimum) to 906mm (Maximum)
1200mm*1000mm	1170mm (Minimum) to 1190mm (Maximum)	976mm (Minimum) to 991mm (Maximum)
1400mm*915mm	1370mm (Minimum) to 1390mm (Maximum)	891mm (Minimum) to 906mm (Maximum)
1500mm*915mm	1470mm (Minimum) to 1490mm (Maximum)	897mm (Minimum) to 906mm (Maximum)

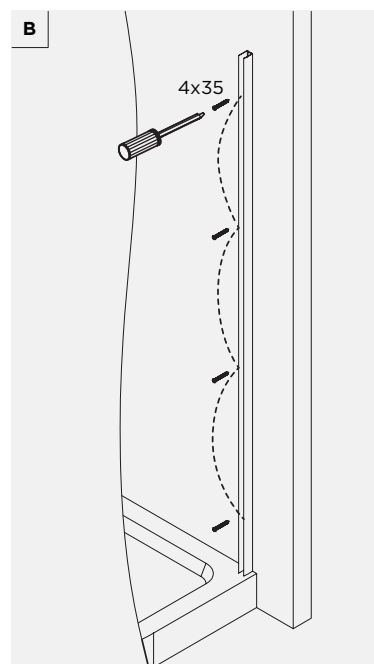
NOTE: Make sure the correct shower is used on the correct tray.

1

Walls out of plumb will not allow for full minimum / maximum options.



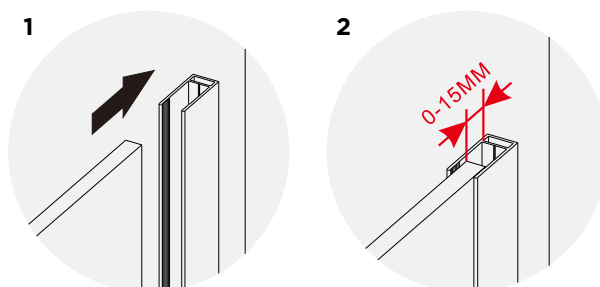
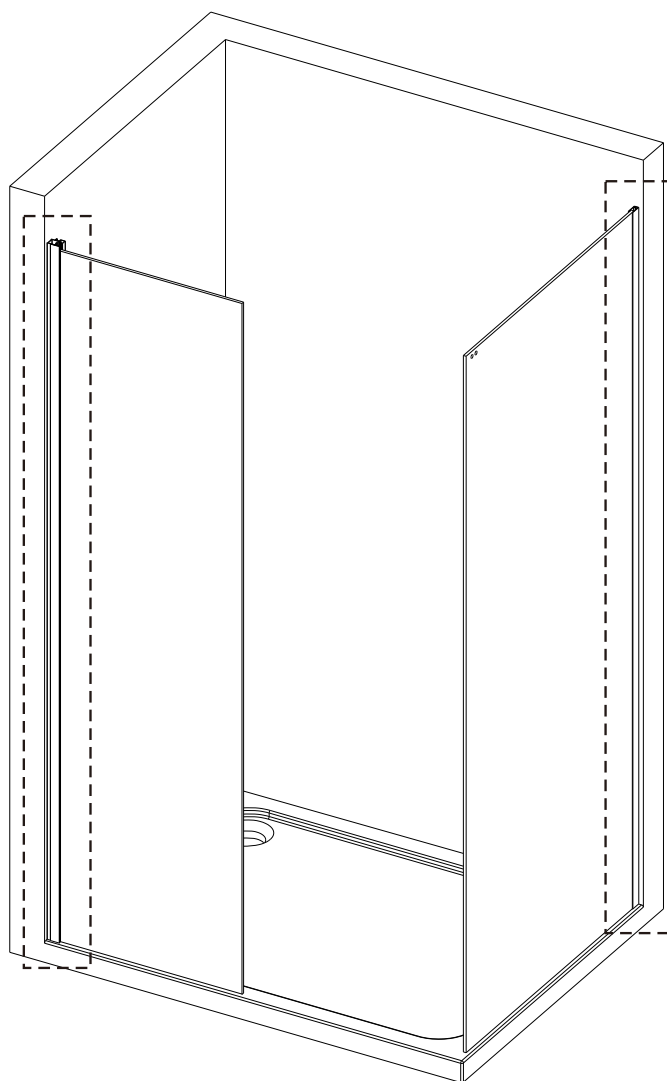
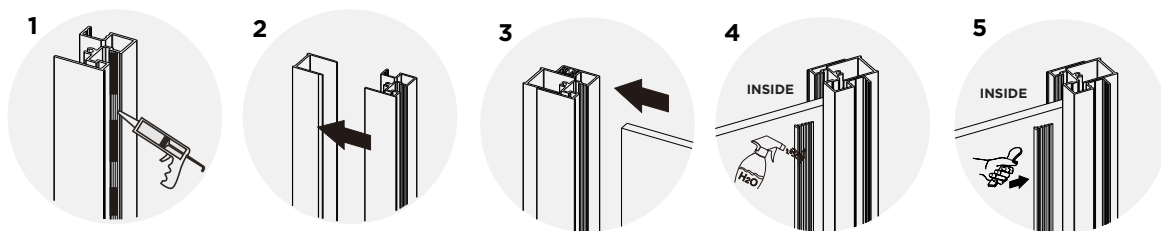
Mark Wall Profile



Fasten Profile to wall.

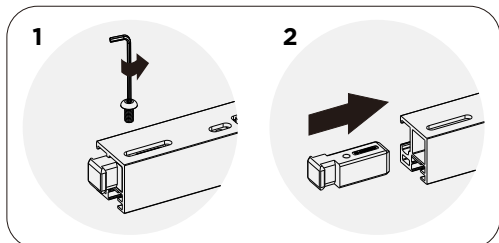
Acrylic Shower Layout

2

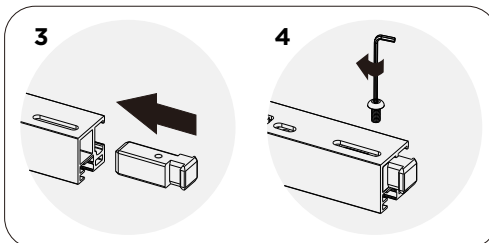


3

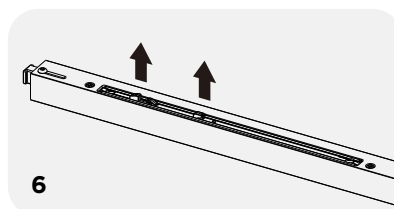
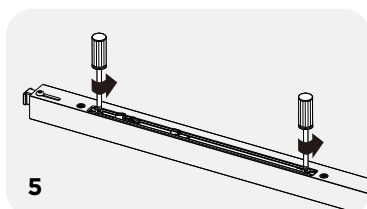
LEFT



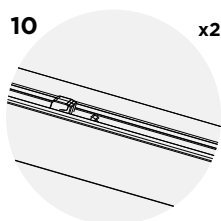
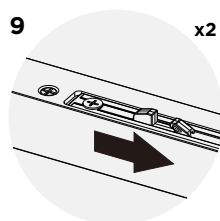
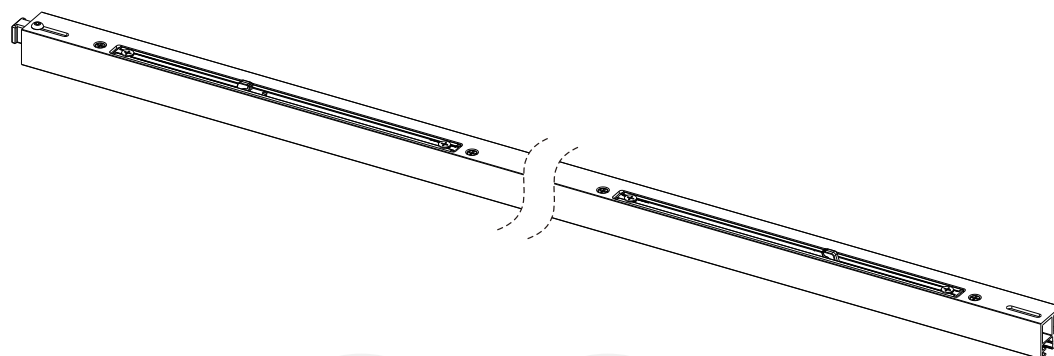
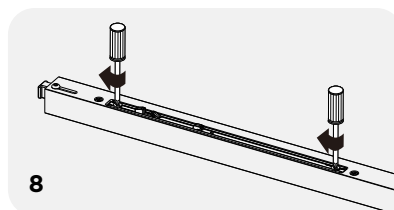
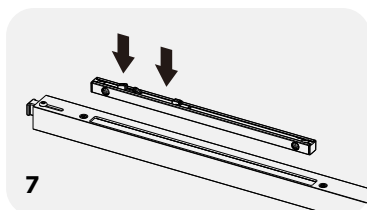
RIGHT



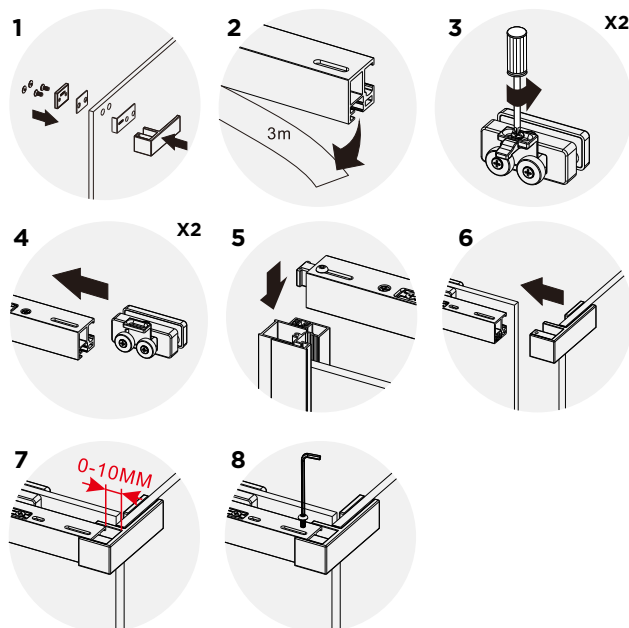
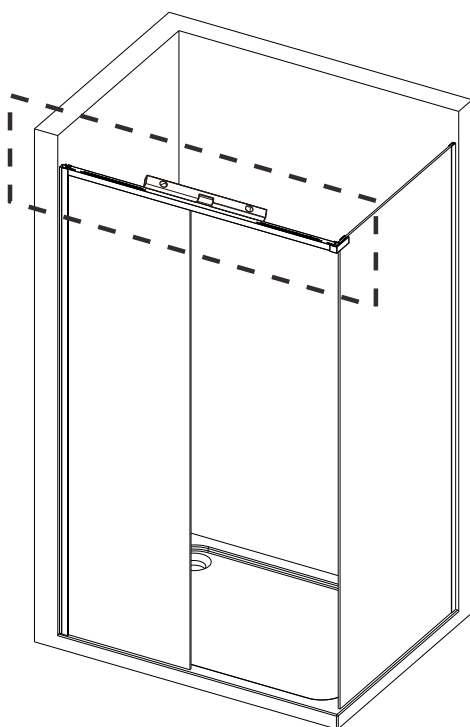
Remove
Roller Stop



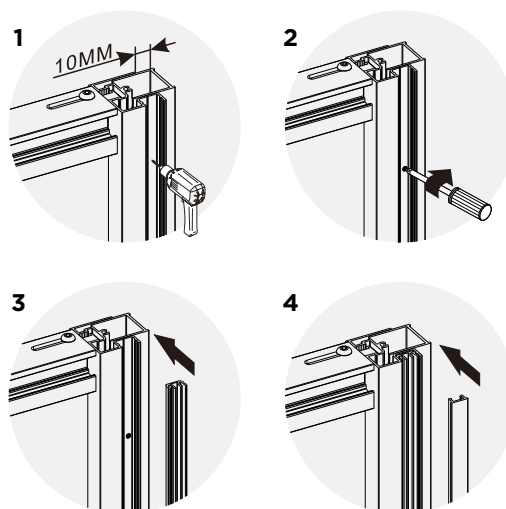
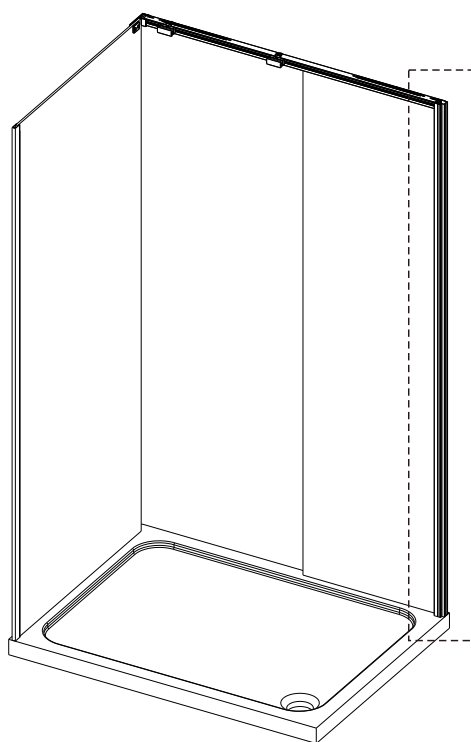
Fitting
Roller Stop



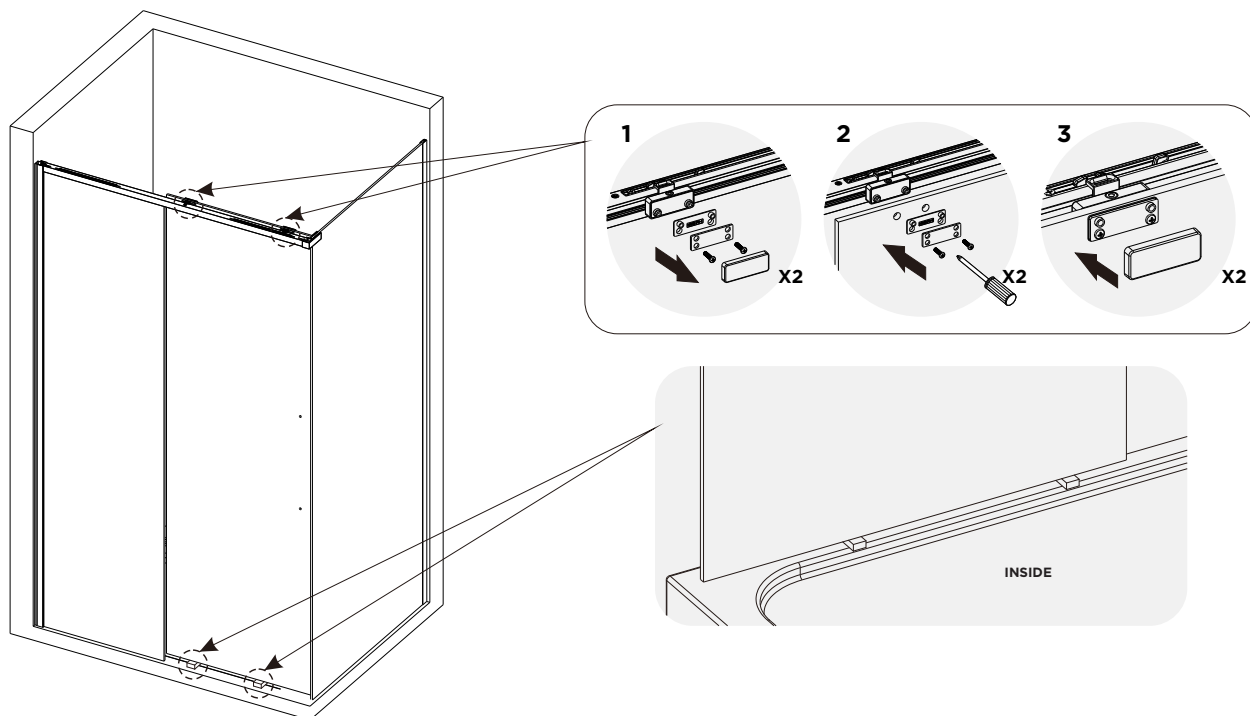
4



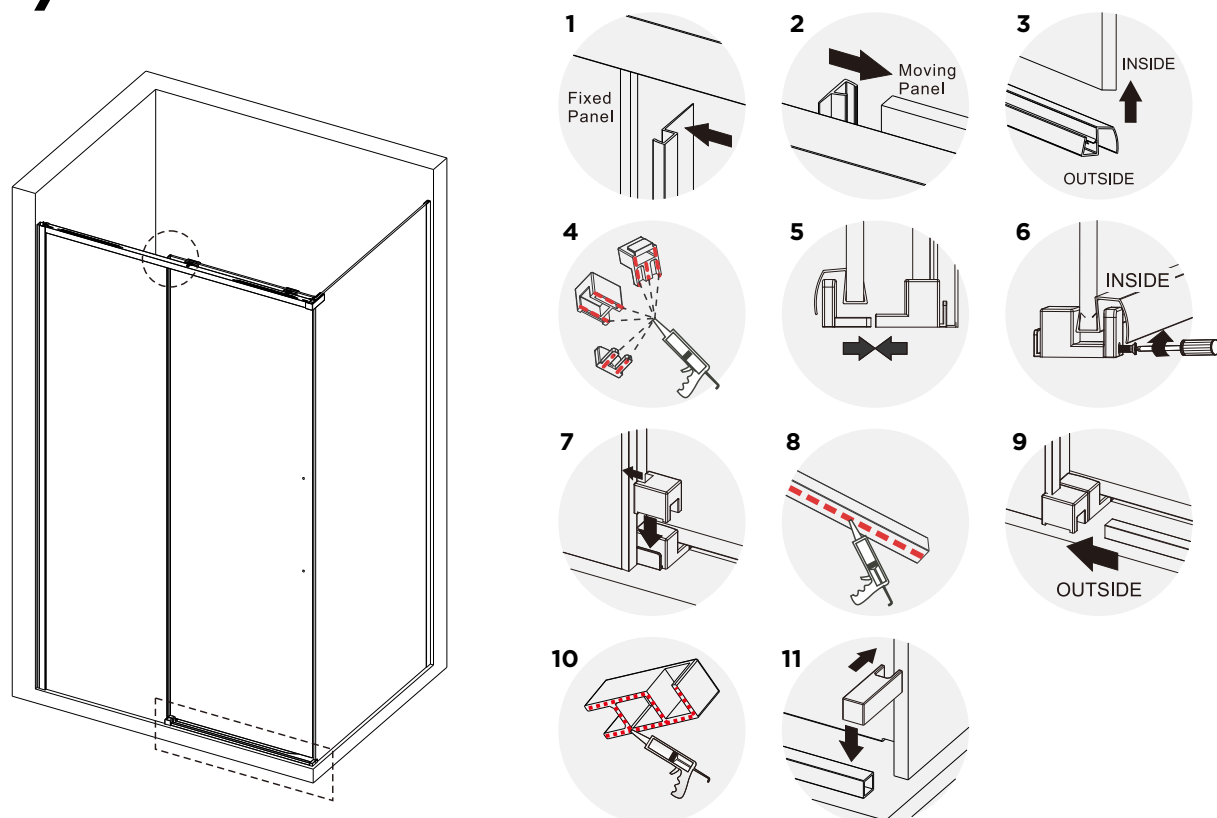
5



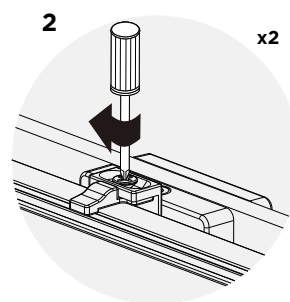
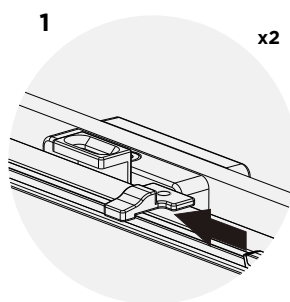
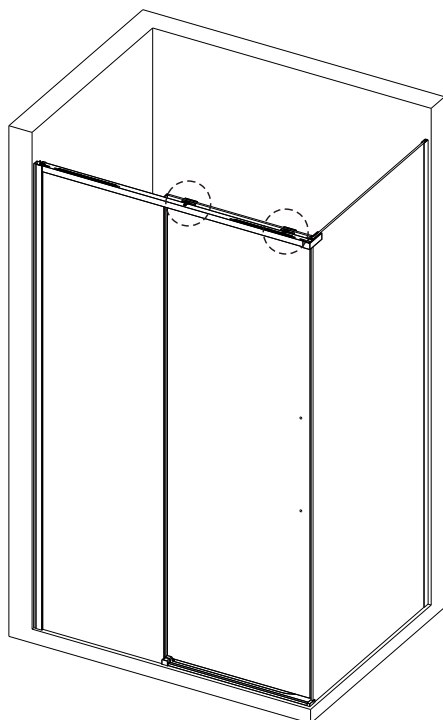
6



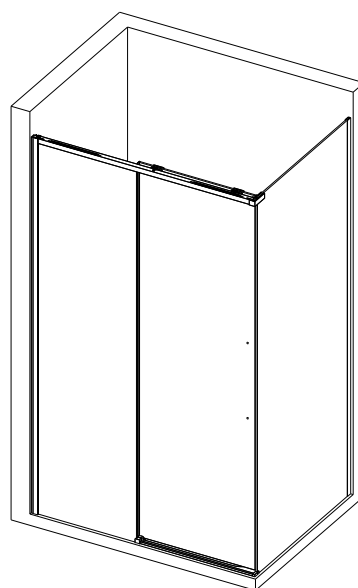
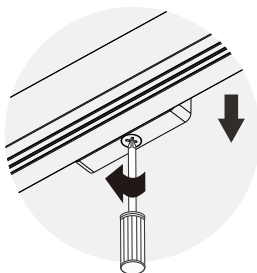
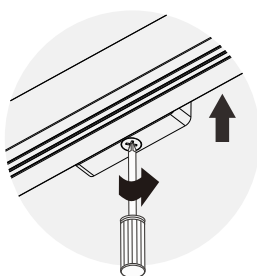
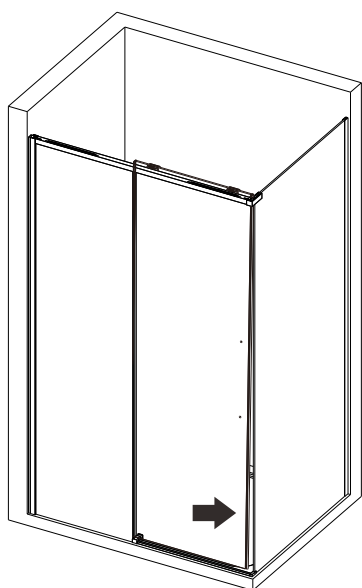
7



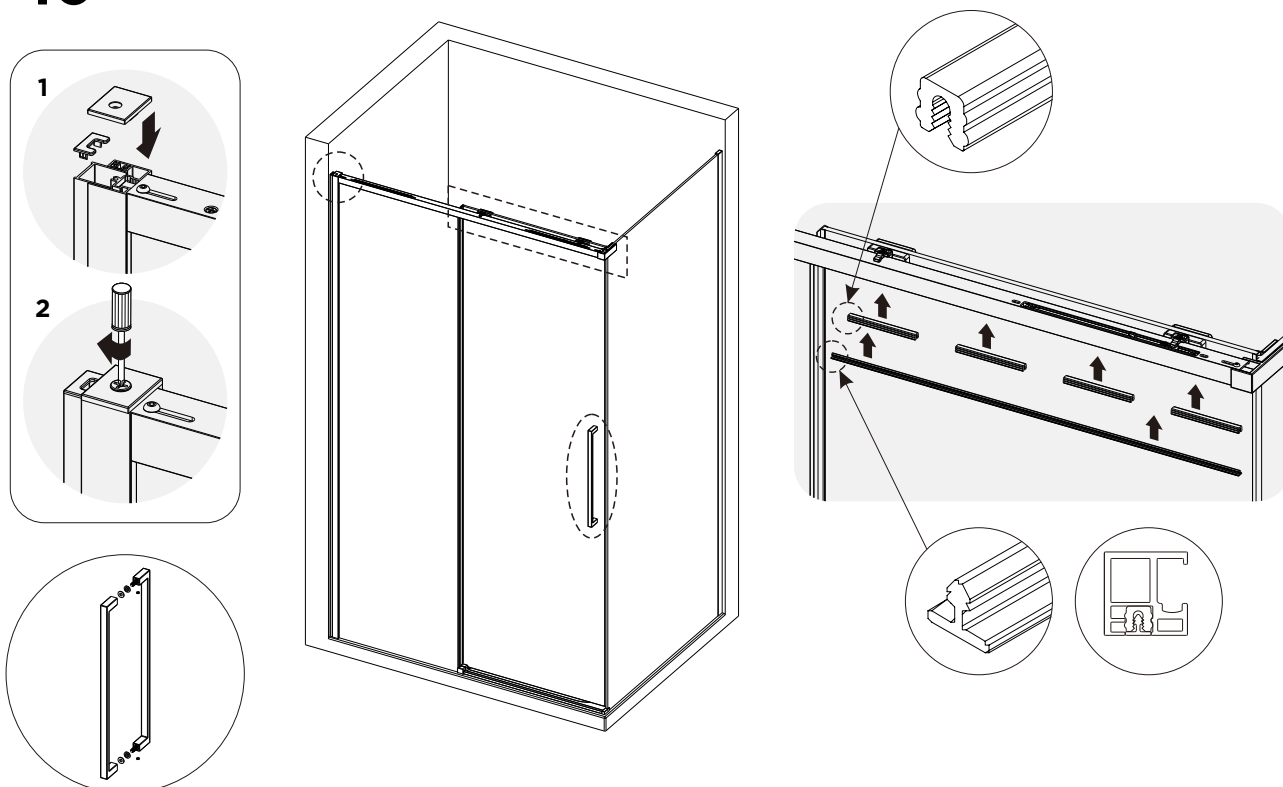
8



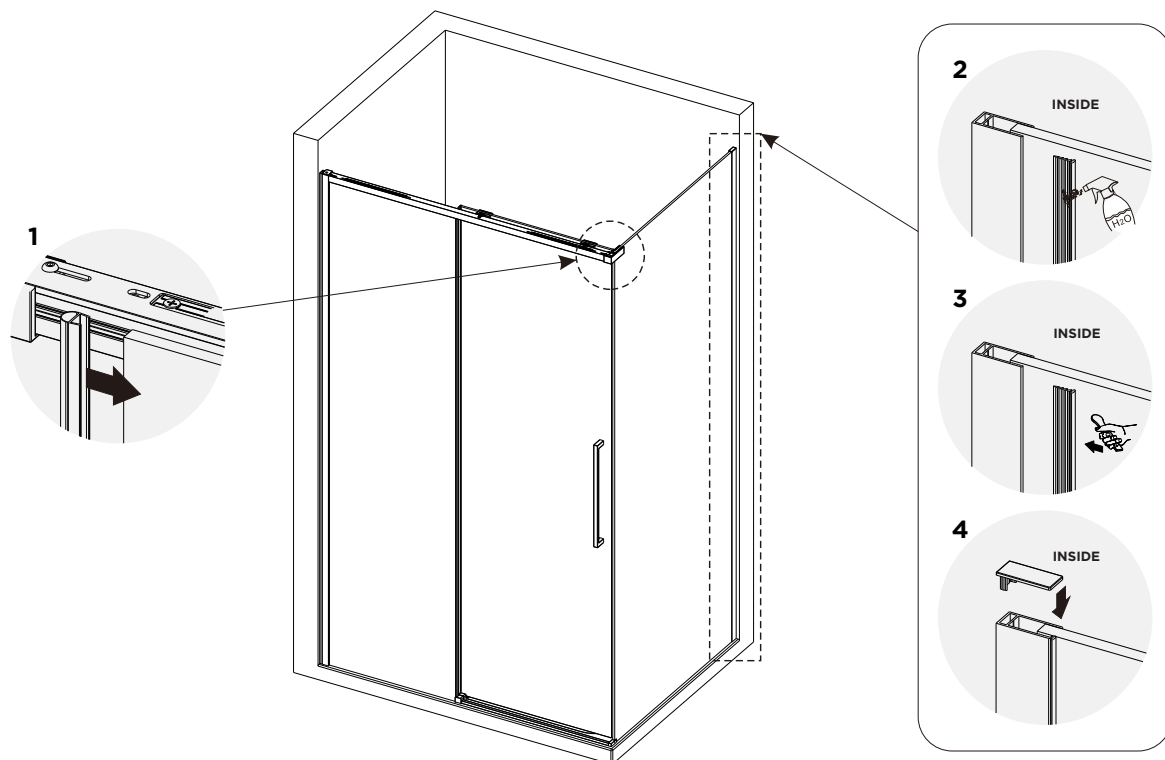
9



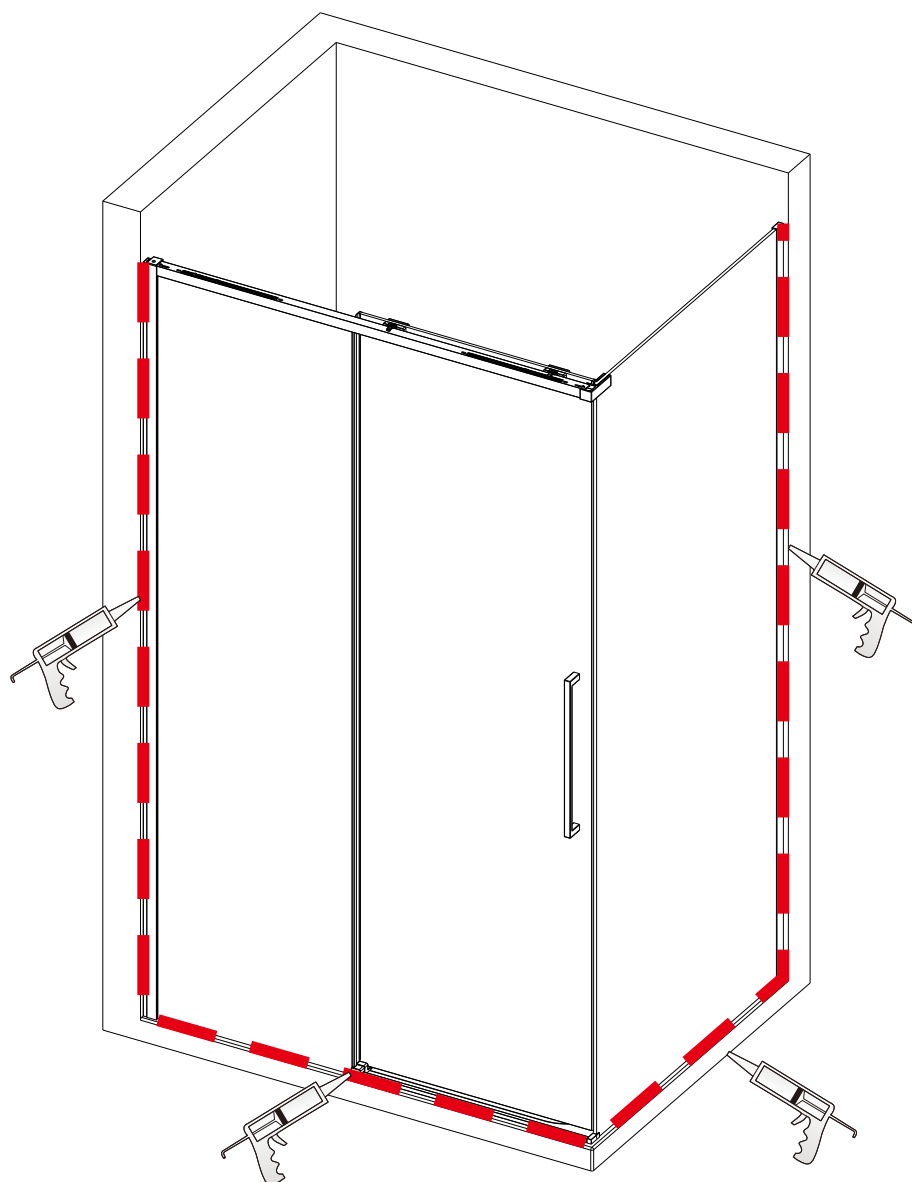
10



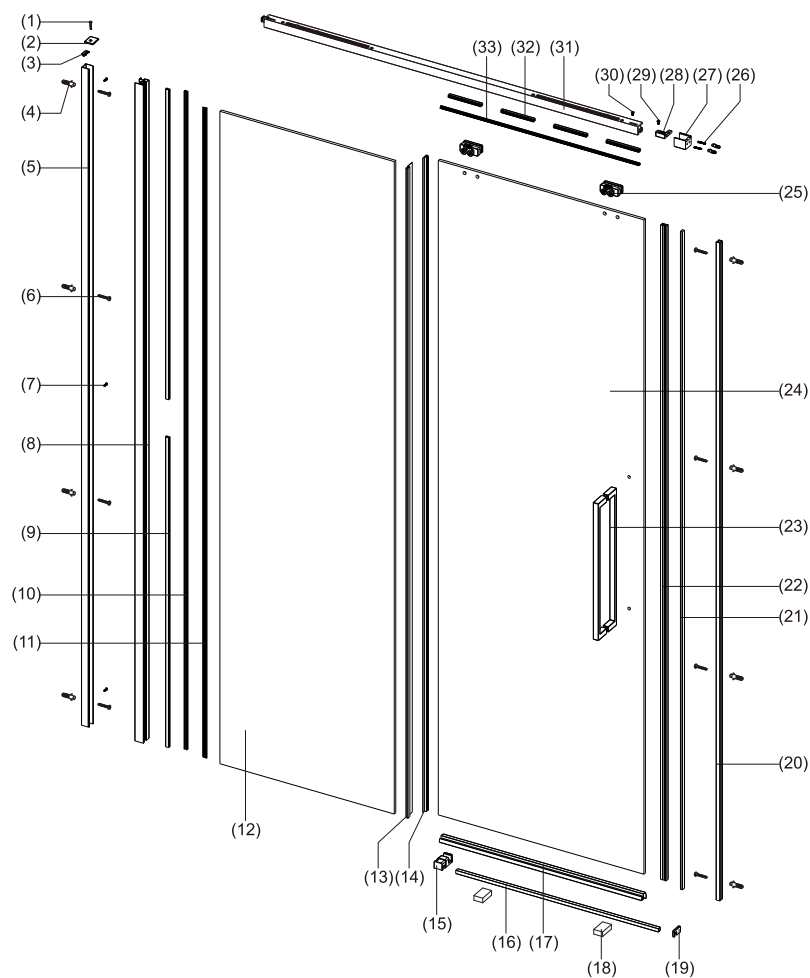
11



12



**Allow 24 hours for silicone
to dry before use.**



COMPONENTS LIST

REFERENCE	DESCRIPTION	QUANTITY
1	Screw ST3.5x30	1
2	Wall Profile Cover Caps L&R	2
3	Wall Profile Cover Cap	1
4	Wall Profile A	1
5	Screws ST4x35	8
6	Screws ST4x8	3
7	Upright Profile	1
8	Cover Strip Seals A	2
9	Cover Strip A	1
10	Wedge Gasket Seal	1
11	Fixed Panel	1
12	Fixed Panel Seal	1
13	Moving Panel Seal	1
14	Bottom Guide Block	1
15	Drip Strip	1
16	Bottom Seal	1

COMPONENTS LIST

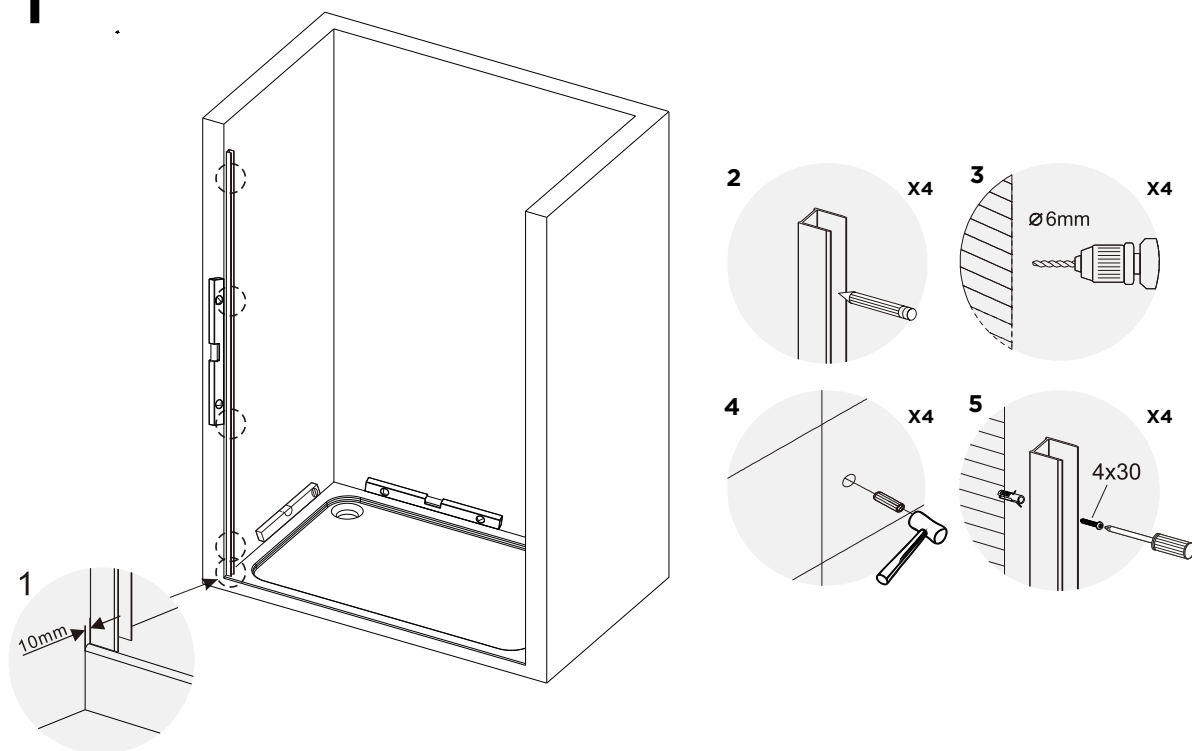
REFERENCE	DESCRIPTION	QUANTITY
17	Blocks	2
18	Drip Strip End Cap	1
19	Wall Profile B	1
20	Magnetic Seal A	1
21	Magnetic Seal B	1
22	Handle	1
23	Moving Panel	1
24	Top Rollers	2
25	Flat Screws ST4x30	2
26	Wall Fixing Bracket A	1
27	Adjustment Bracket A L&R	2
28	Flat Screw M4x8	1
29	Round Screws M4x8	1
30	Guide Rail	1
31	Cover Strip Seals B	4
32	Cover Strip B	1
33	Adjustment Bracket	1

DOOR	DOOR SET
1200mm	1170mm (Minimum) to 1190mm (Maximum)
1400mm	1370mm (Minimum) to 1390mm (Maximum)
1500mm	1470mm (Minimum) to 1490mm (Maximum)

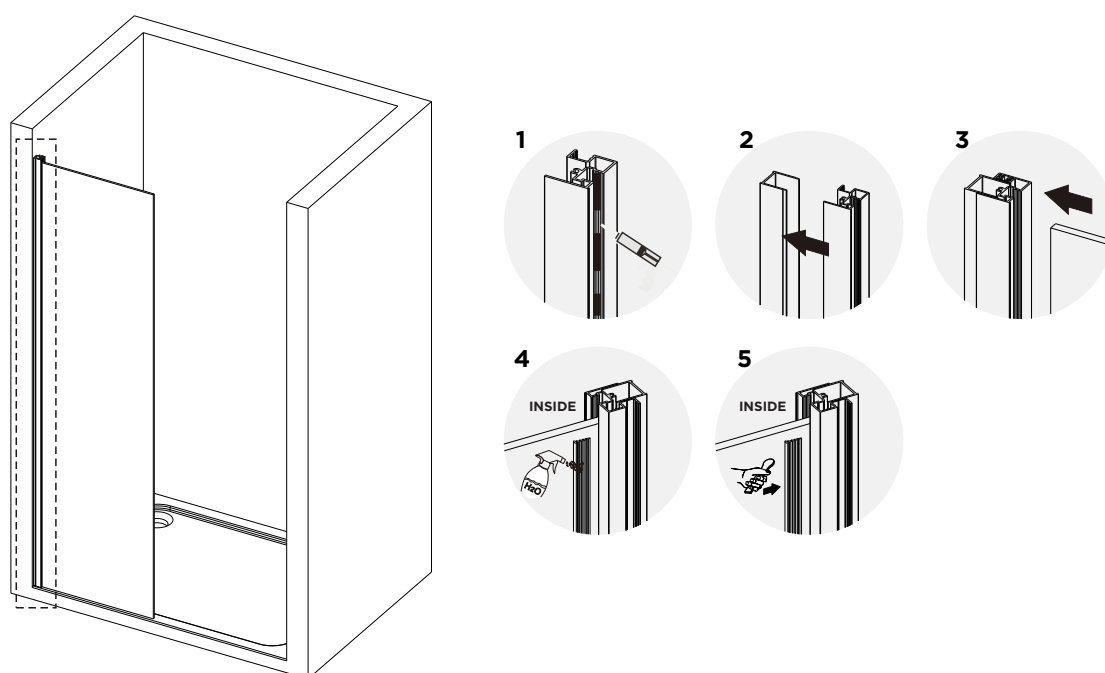
NOTE: Make sure the correct shower is used on the correct tray.

Walls out of plumb will not allow for full minimum / maximum options.

1



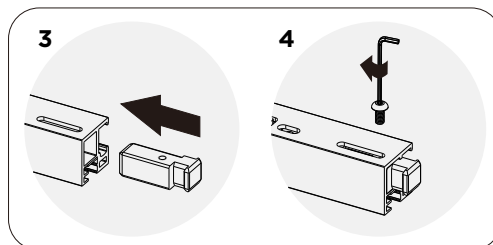
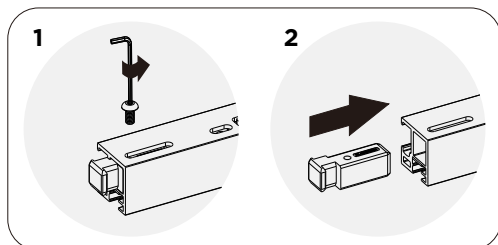
2



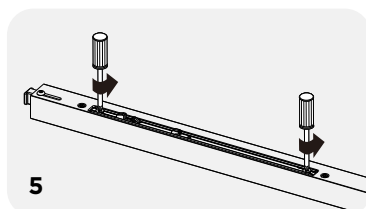
3

LEFT

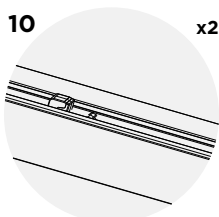
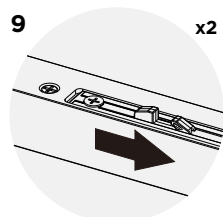
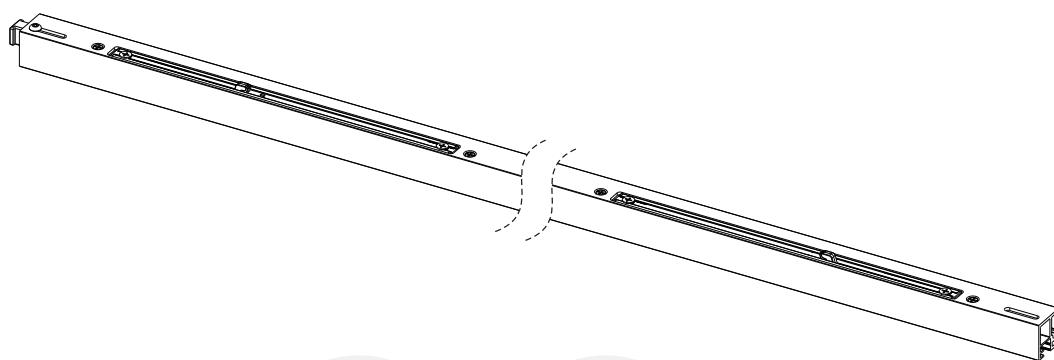
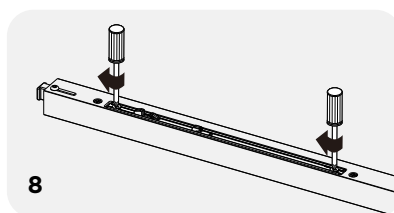
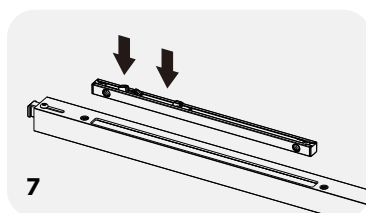
RIGHT



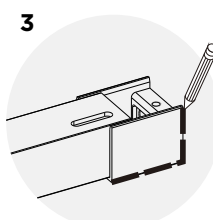
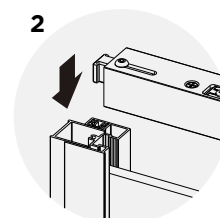
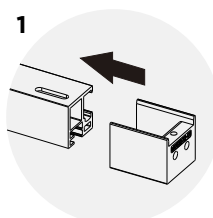
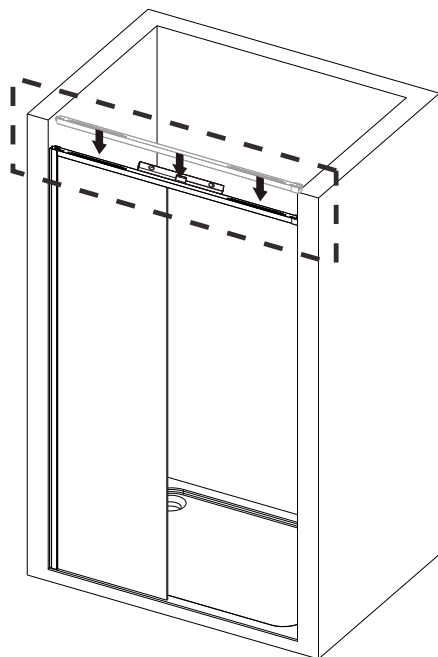
Remove
Roller Stop



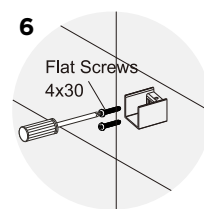
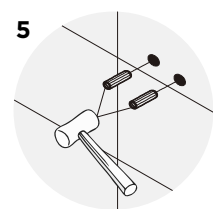
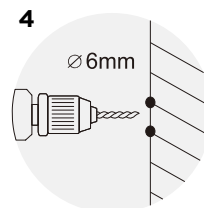
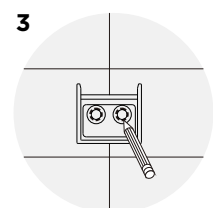
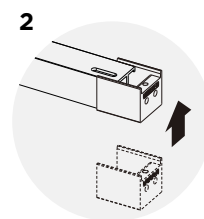
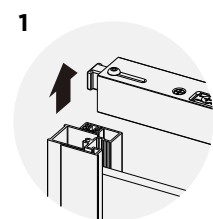
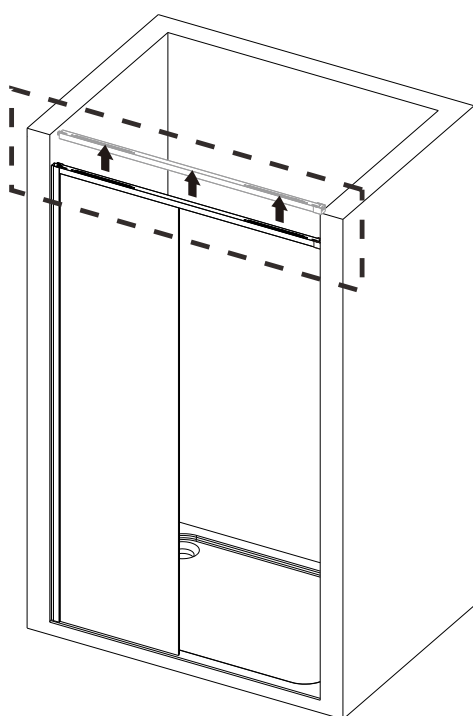
Fitting
Roller Stop



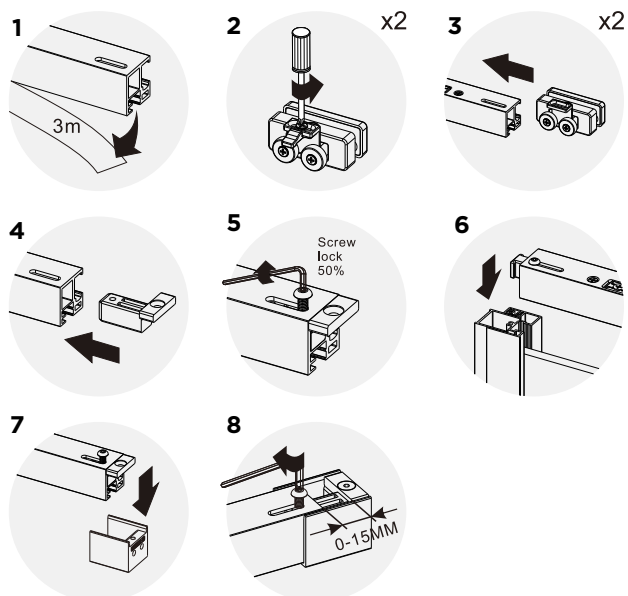
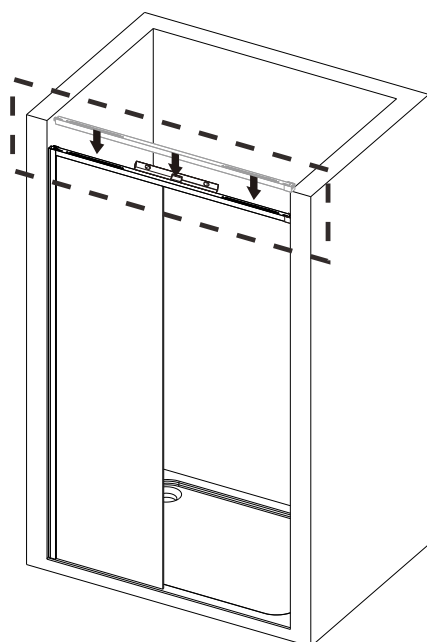
4



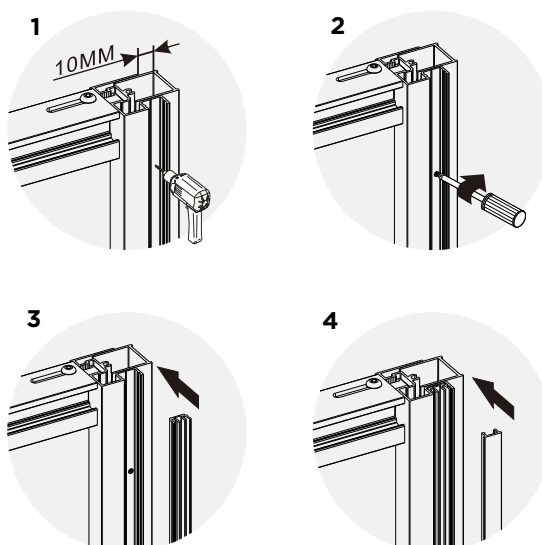
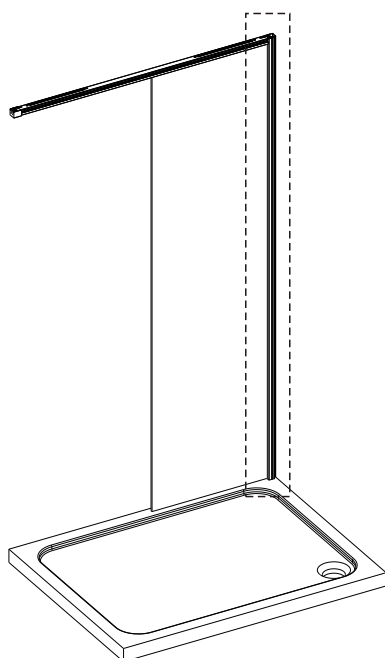
5



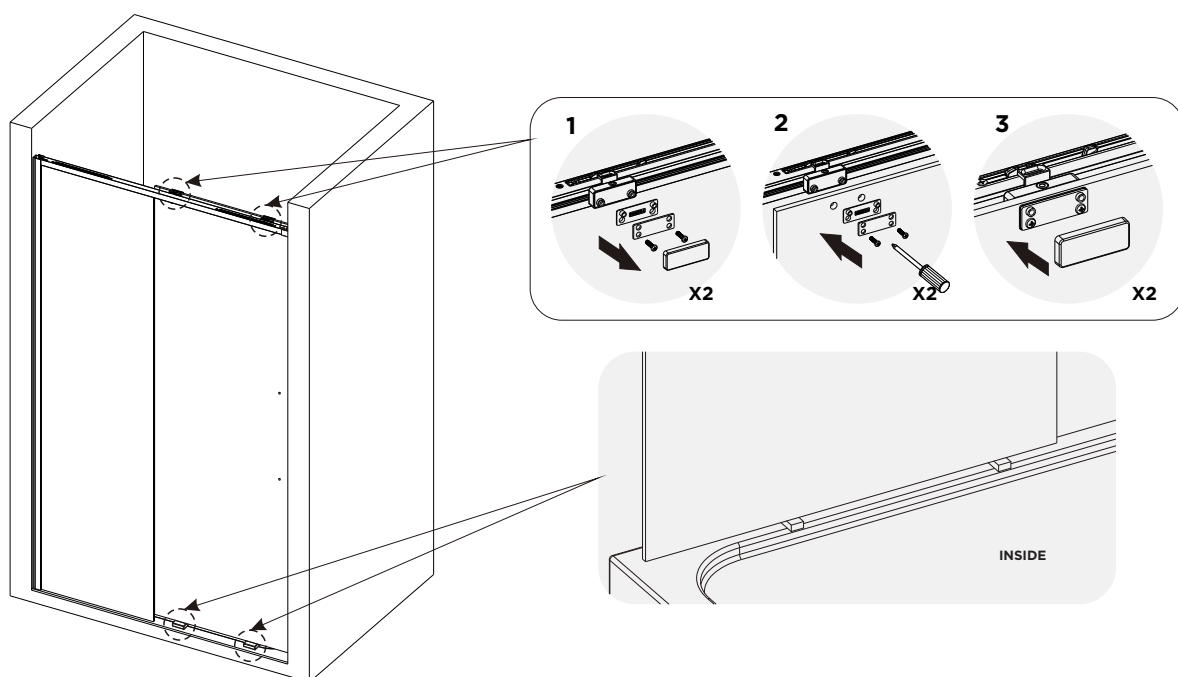
6



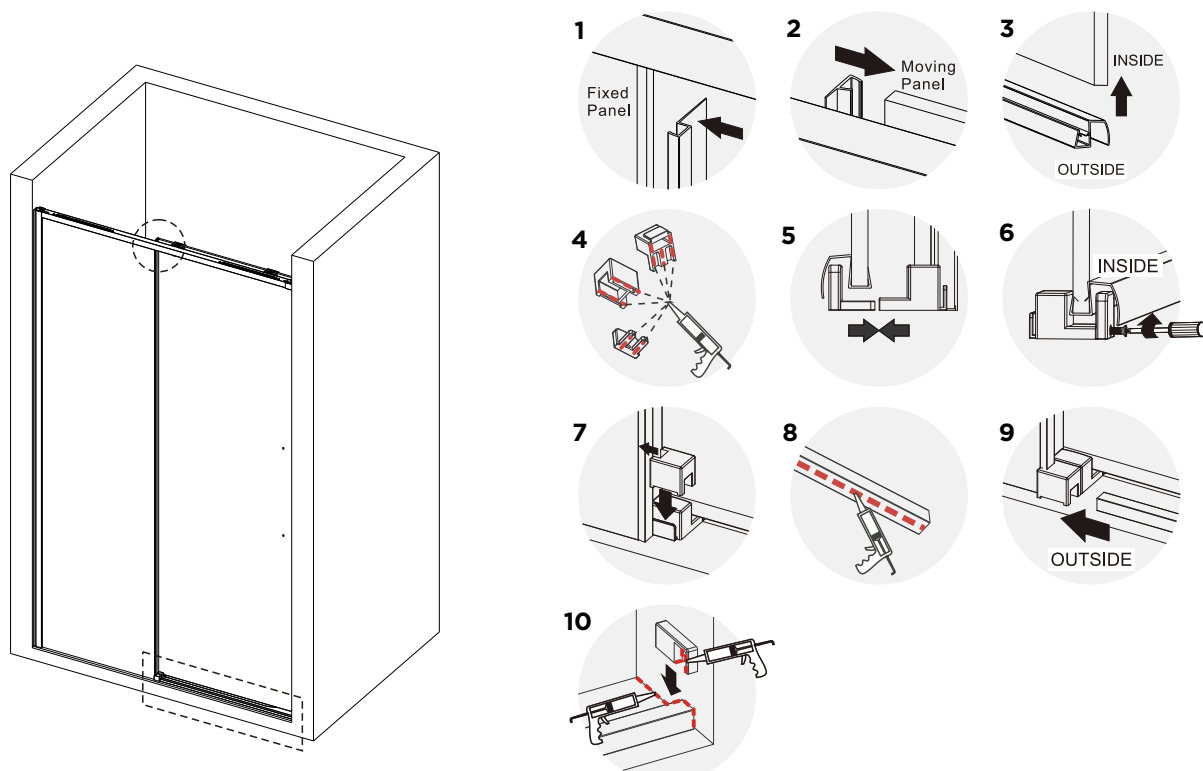
7



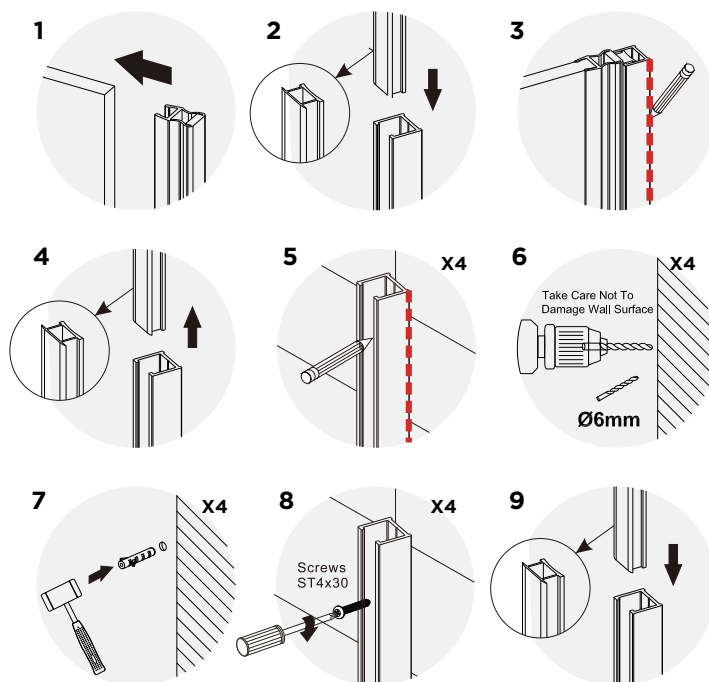
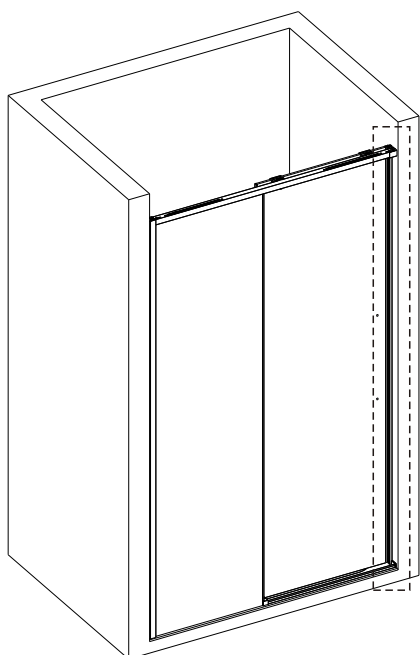
8



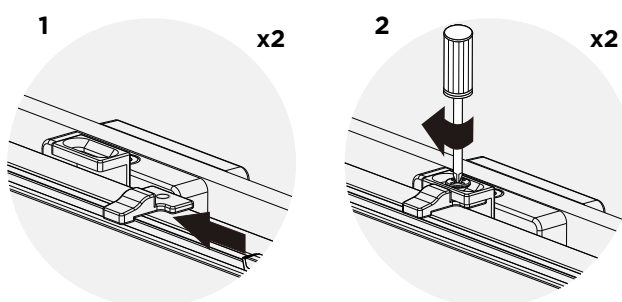
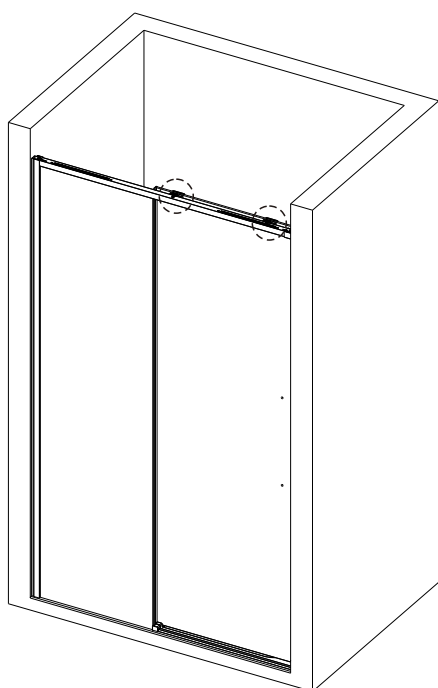
9



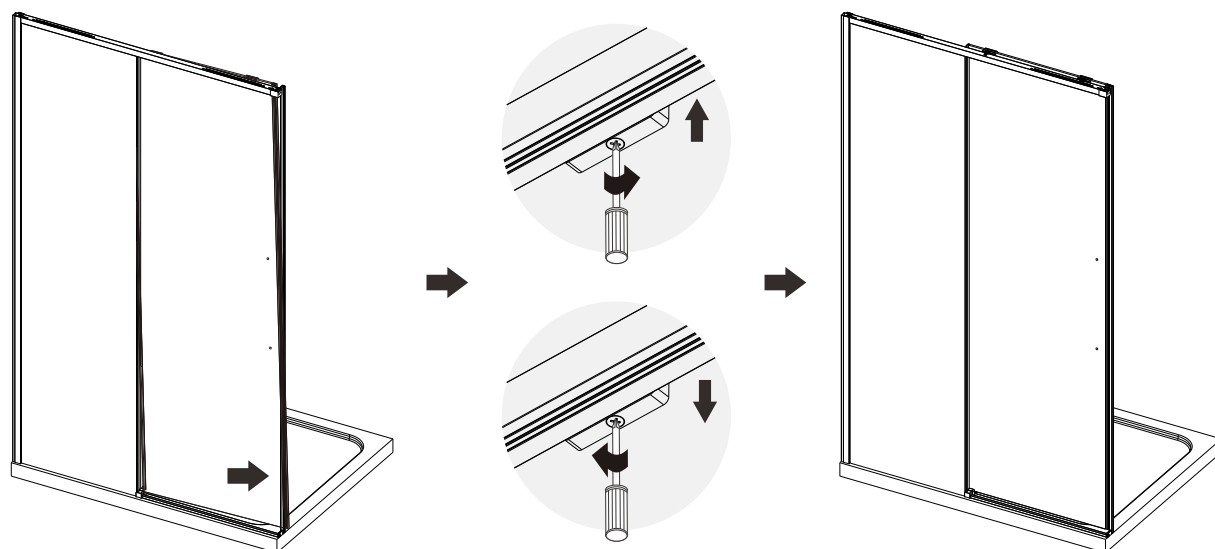
10



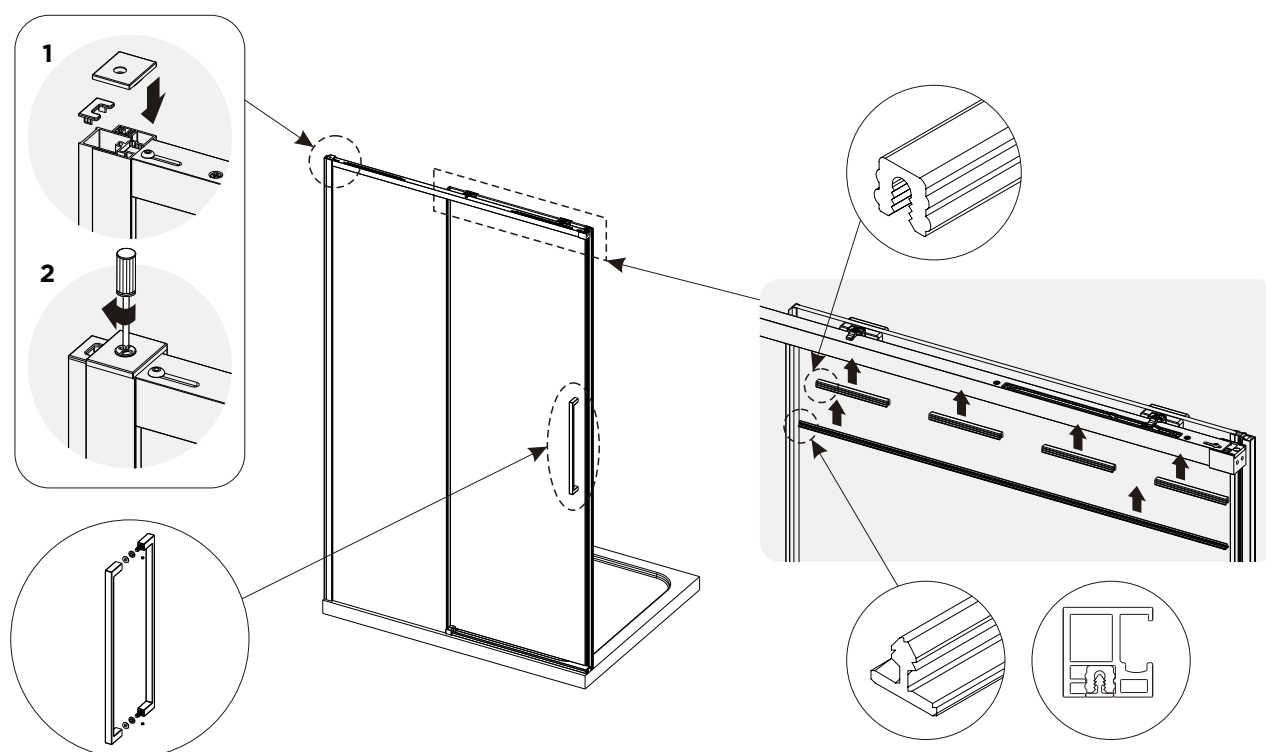
11



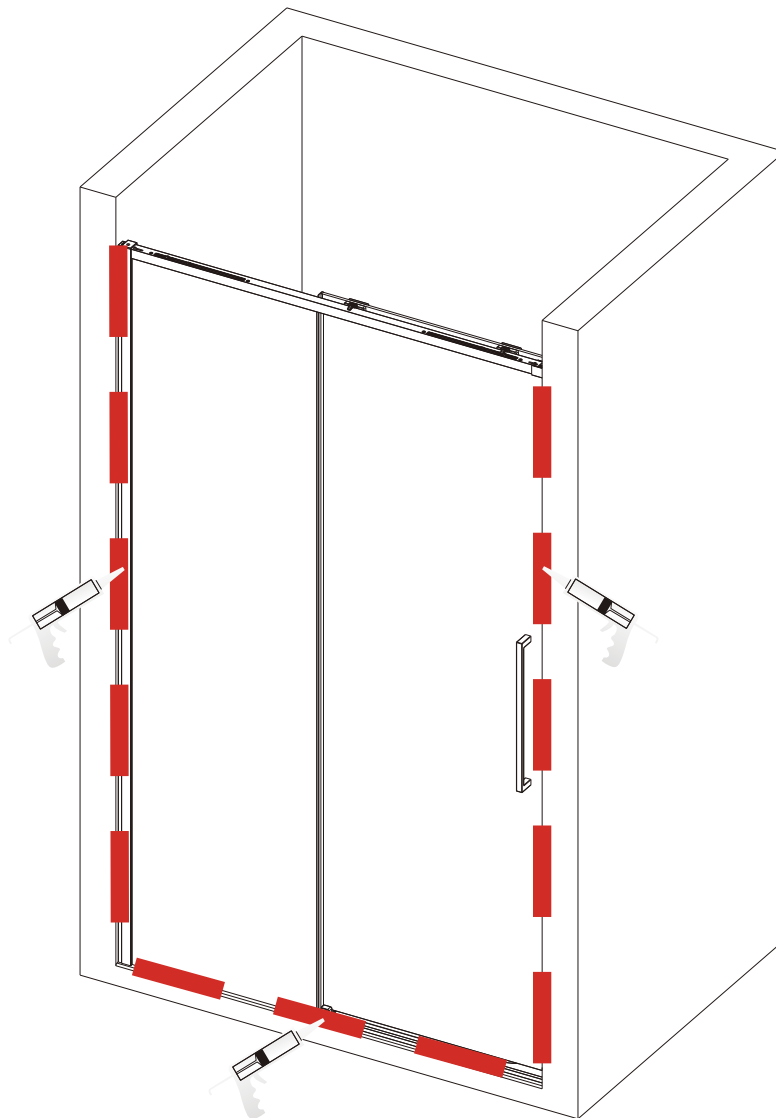
12



13



14



Allow 24 hours for silicone to dry before use.