

Important

1. When you receive your product check the contents for any freight damage or defects.
2. If this is a custom order, the size will be on the outside of the box. Check that it is correct.
3. Advise Marni on 0800 4 MARNI if any damage has occurred or if you have any questions about the size within 8 hours of receiving the goods so this can be rectified.
4. Do not install faulty products, as this will void your warranty.



Health and Safety

- Unpack glass, stand on soft packing on floor and walls prior to assembly.
- Do not rework glass panels.
- Do not strike an edge or corner of glass.
- Use two persons where heavy glass lifting is required.
- Wear appropriate protective clothing and eye protection during installation.
- Mark gas/water pipe and electrical wire locations to ensure these are not touched.

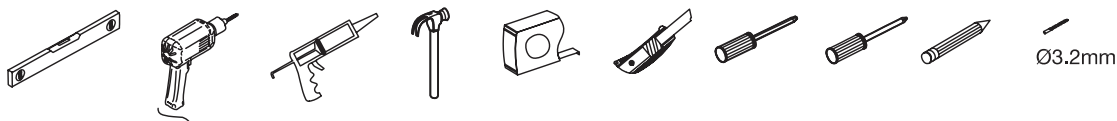


Attention

- **The tray base** must be installed level as this affects all shower alignments.
- **Wall Specifications** require a max variation of 3mm within shower height.
Installer must check the viability of install if outside of these specs.
- **3-Sided Alcove Showers:** Wall must be accurate, straight, and plumb. Refer pre-install guide.
- **Double studs for solid fixing of wall channels:** Positioned at tray outside edge



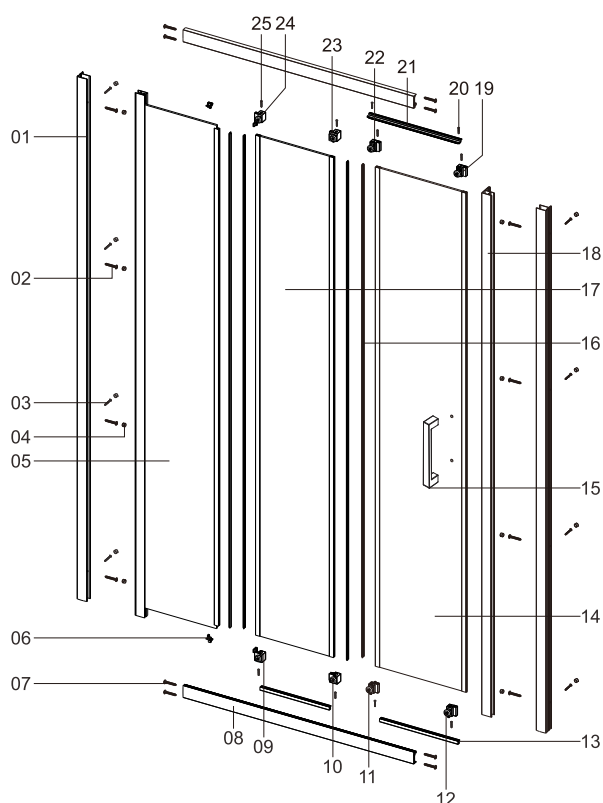
Tools Required



Warranty

- This covers faulty goods but not breakages. Visit marni.nz for information.
- Compliance with Specs and these instructions are essential for a valid warranty.

We recommend a skilled tradesman acquainted with shower installations to ensure the very best outcome.



COMPONENTS LIST

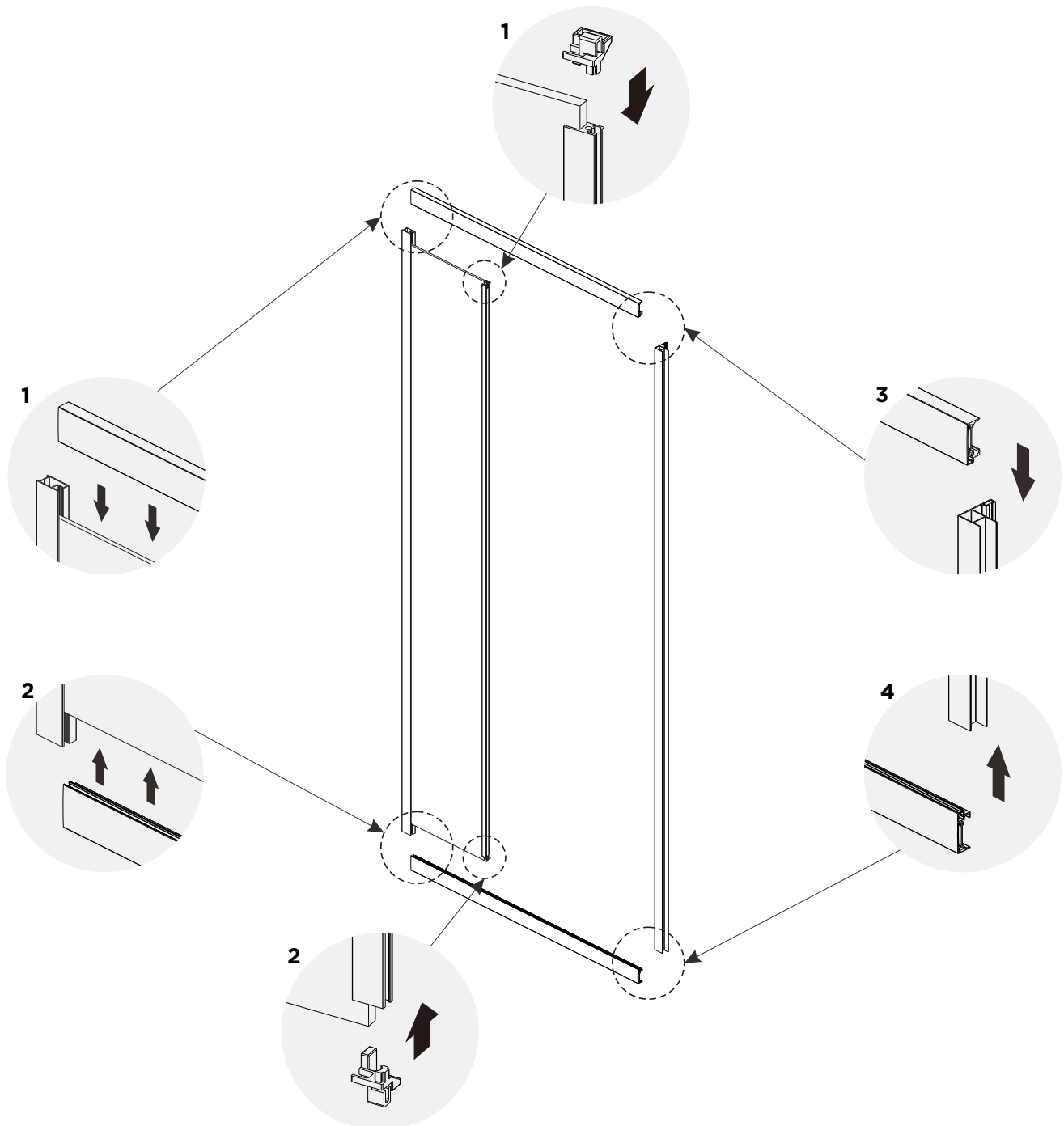
REFERENCE	DESCRIPTION	QUANTITY
1	Wall Profiles	2
2	Screws ST4x35	8
3	Screws ST4x10	8
4	Screws Cover Cap	16
5	Fixed Panel	1
6	Glass Clip L&R	2
7	Screws ST3.5x30	8
8	Top & Bottom Rails	2
9	Roller (N01719-1)	1
10	Roller (N01717-1)	1
11	Roller (N01715-1)	1
12	Roller (N01713-1)	1
13	Bottom Seals	2
14	Moving Panel A	1
15	Handle	1
16	Seals	4
17	Moving Panel B	1
18	Upright Profile	1
19	Roller (N01712-1)	1
20	Screws M4x10	2
21	Top Sliding Panel Profile & Seal	1
22	Roller (N01714-1)	1
23	Roller (N01716-1)	1
24	Roller (N01718-1)	1
25	Screws ST3.5x50	8

SHOWER TYPE	WALL CHANNEL ADJUSTMENT	ACRYLIC TRAY
900mm*900mm	870mm (Minimum) to 890mm (Maximum)	Standard Profile Tray

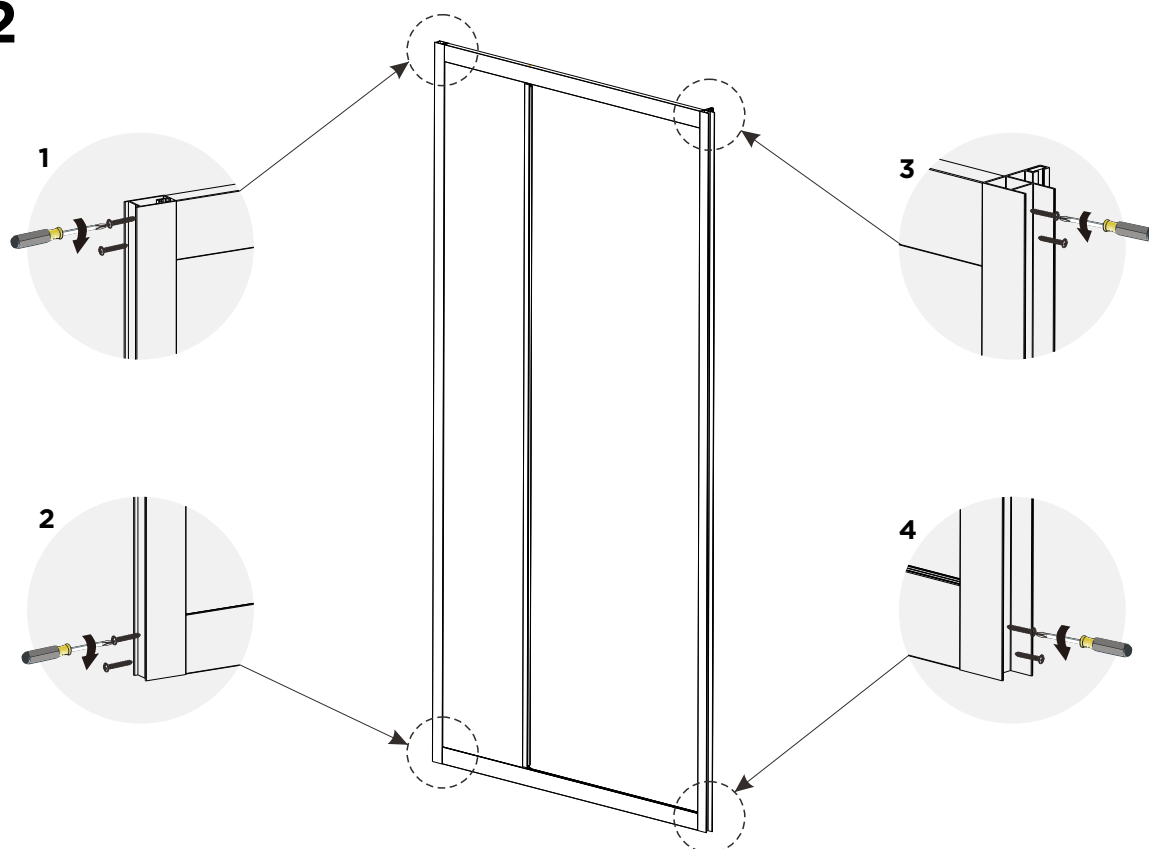
NOTE: Make sure the correct shower is used on the correct tray.

Walls out of plumb will not allow for full minimum / maximum options.

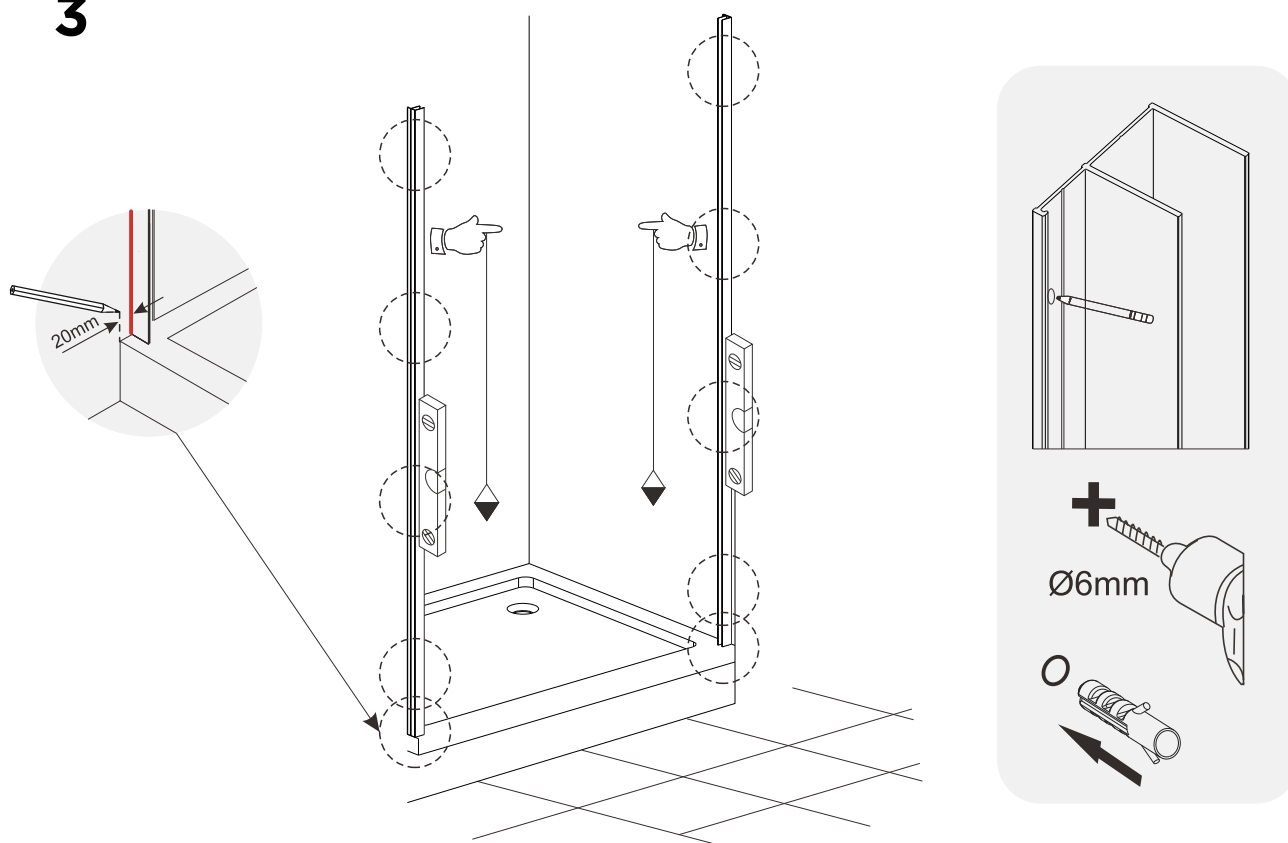
1



2

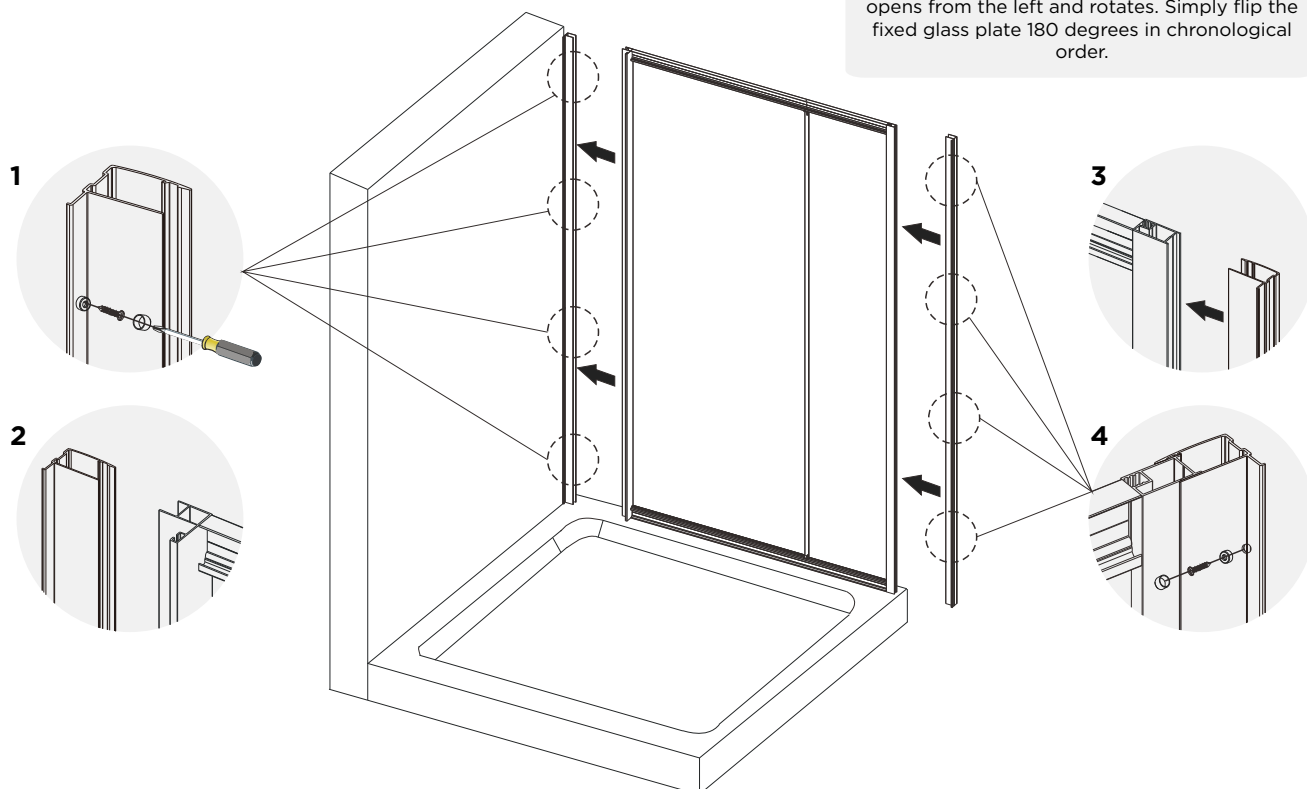


3

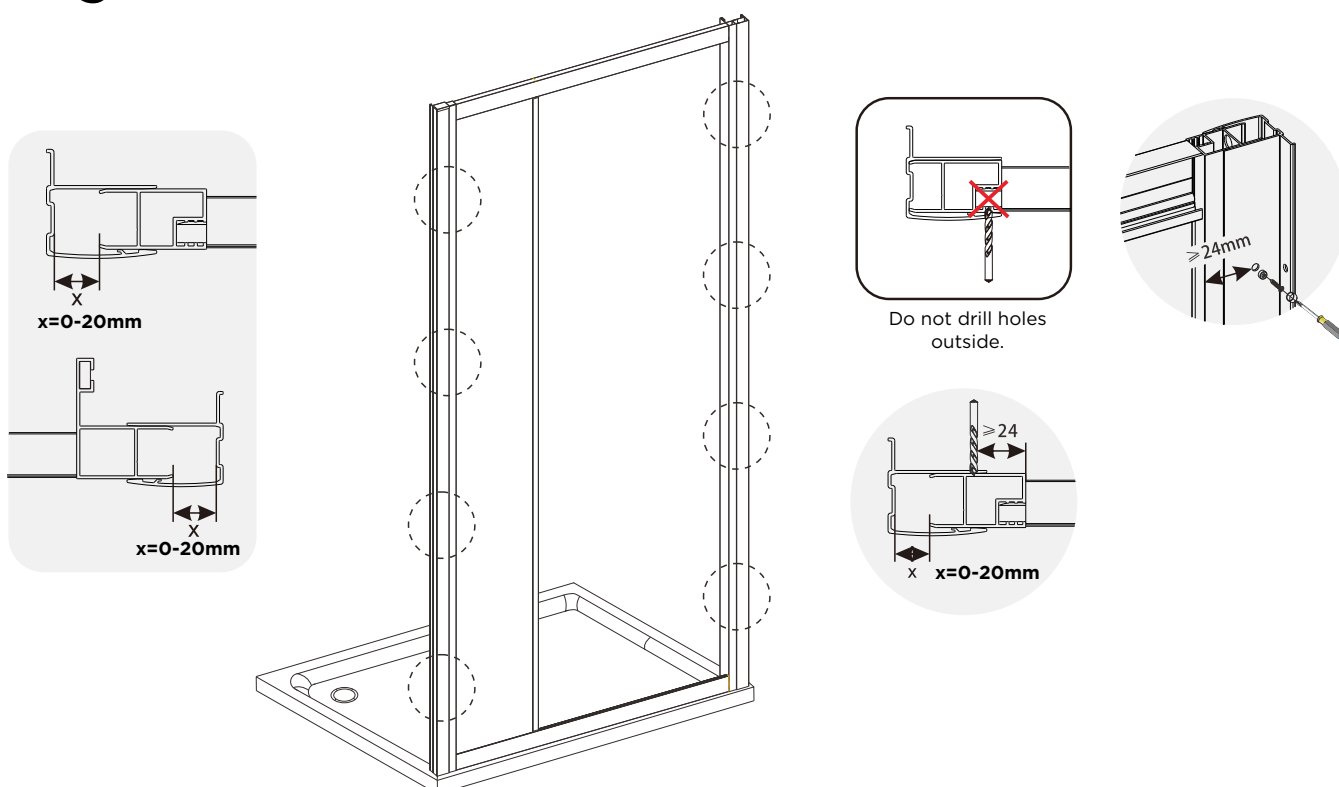


4

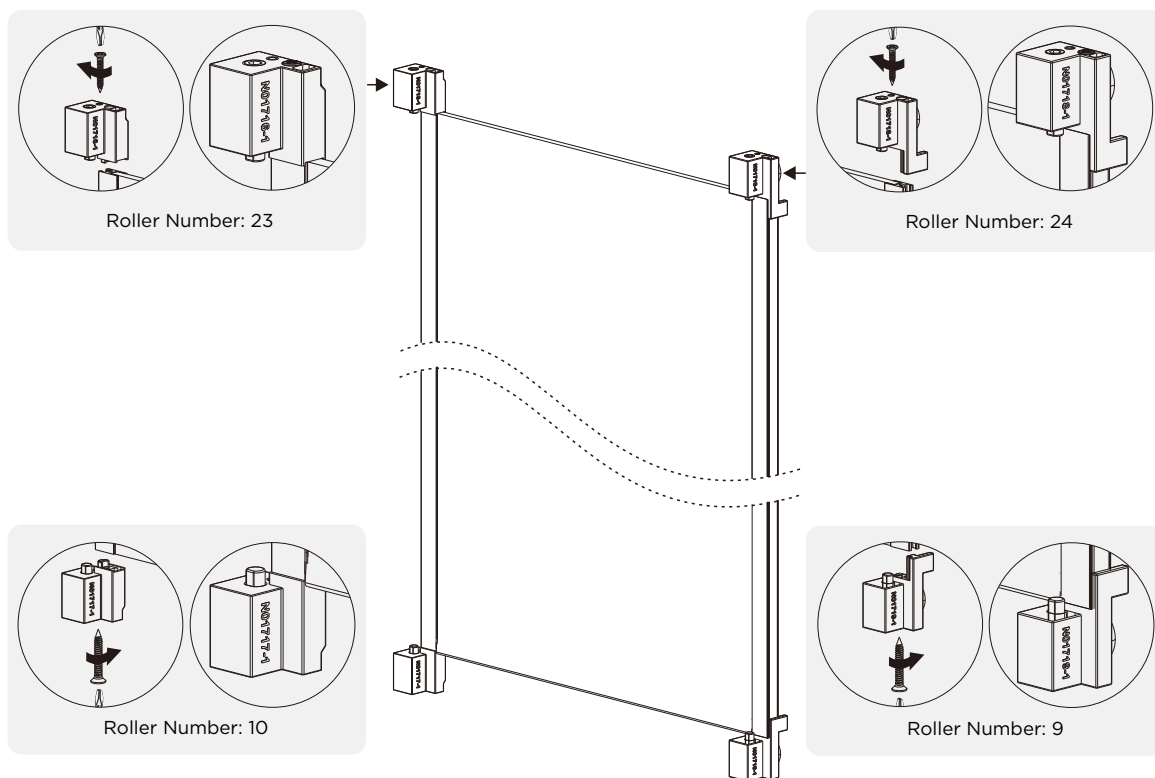
If you want to arrange the door this way, it opens from the left and rotates. Simply flip the fixed glass plate 180 degrees in chronological order.



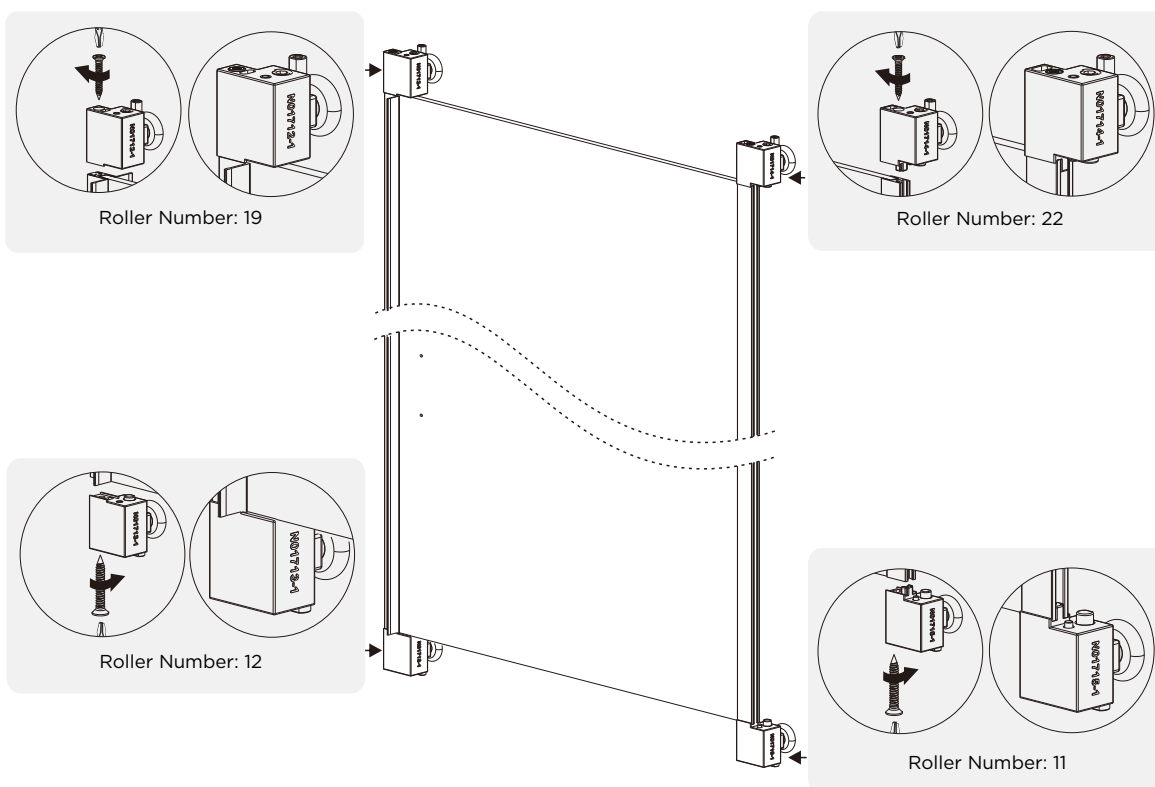
5



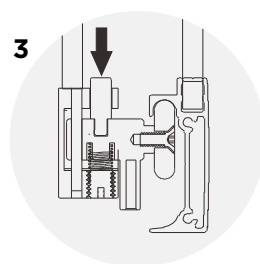
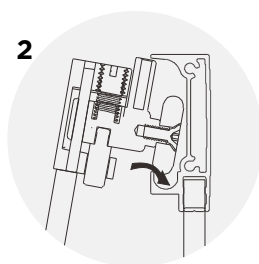
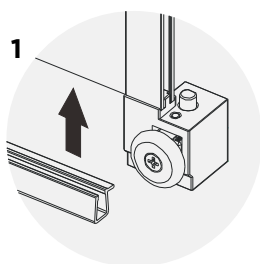
6



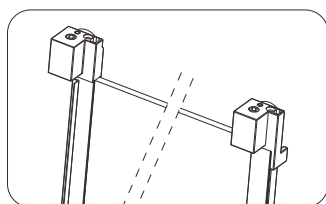
7



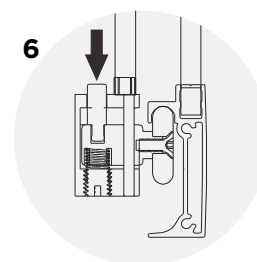
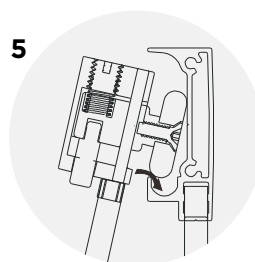
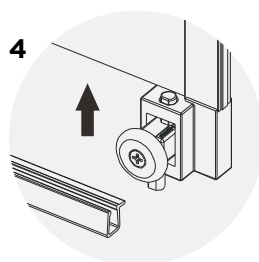
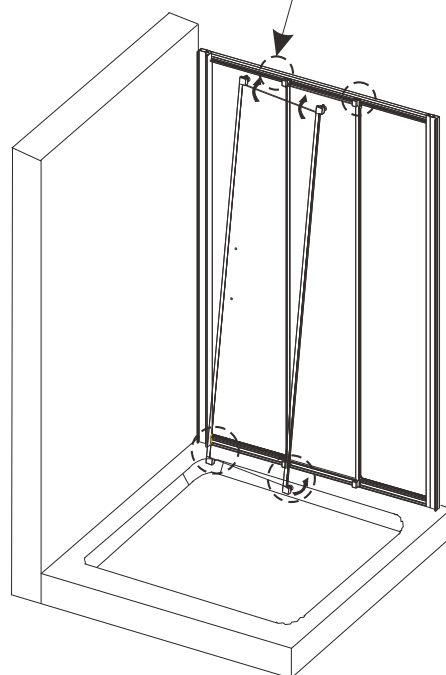
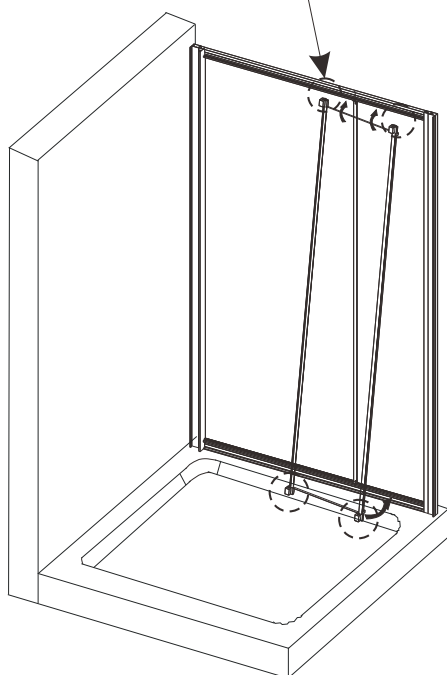
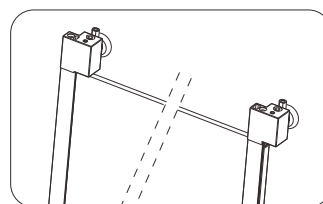
8



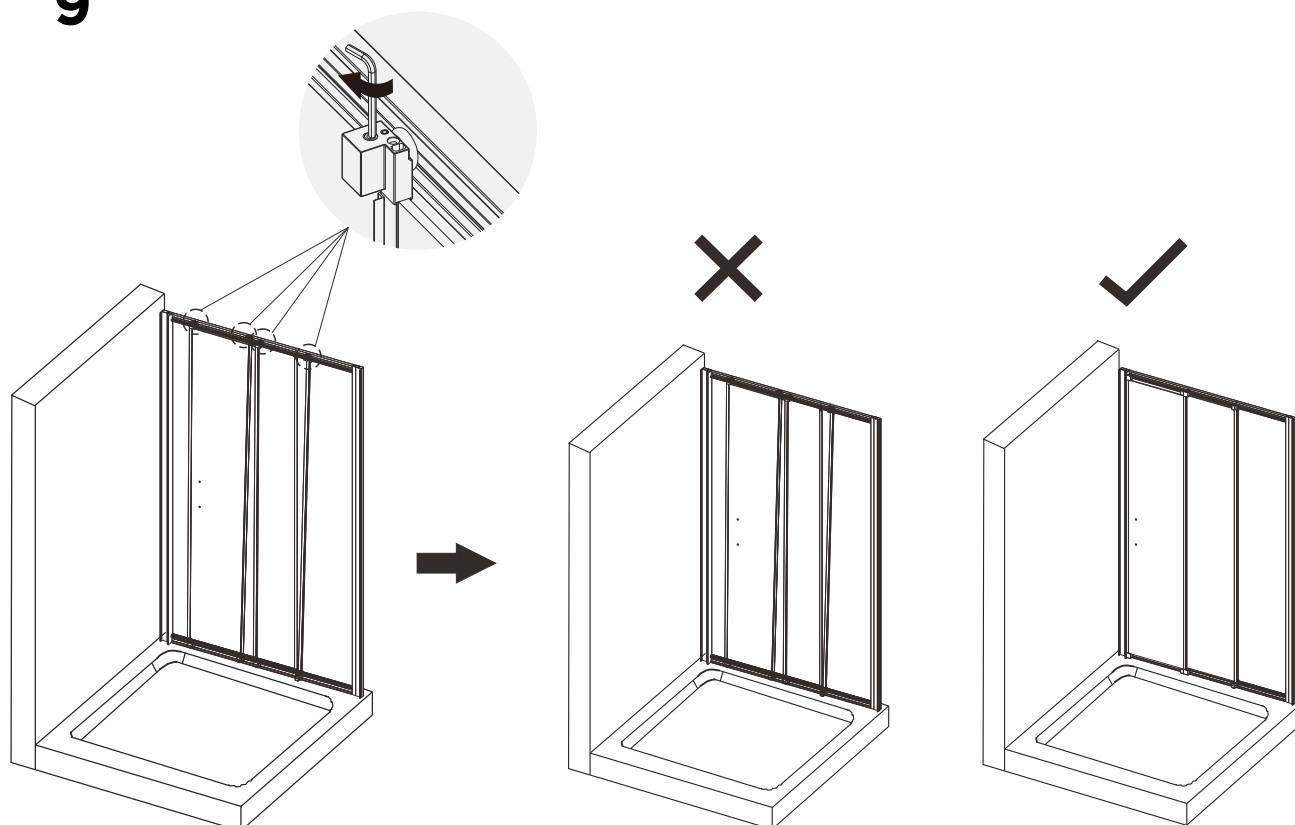
Moving Panel B



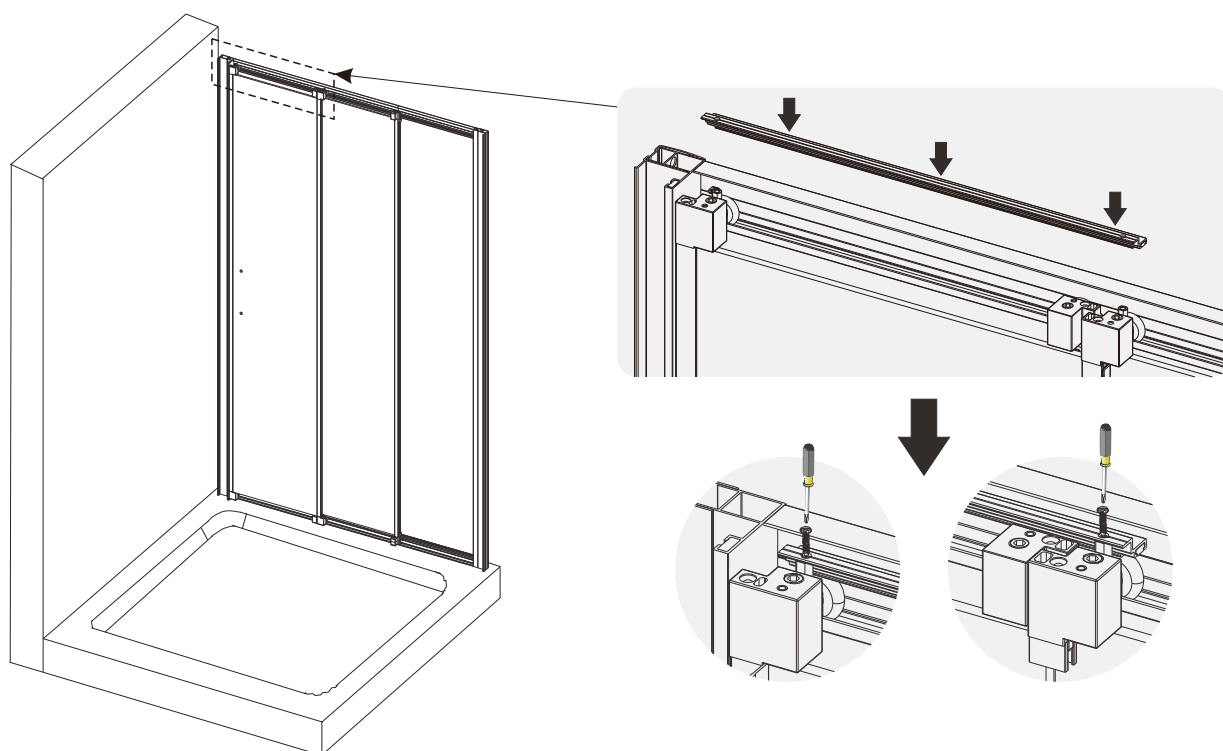
Moving Panel A



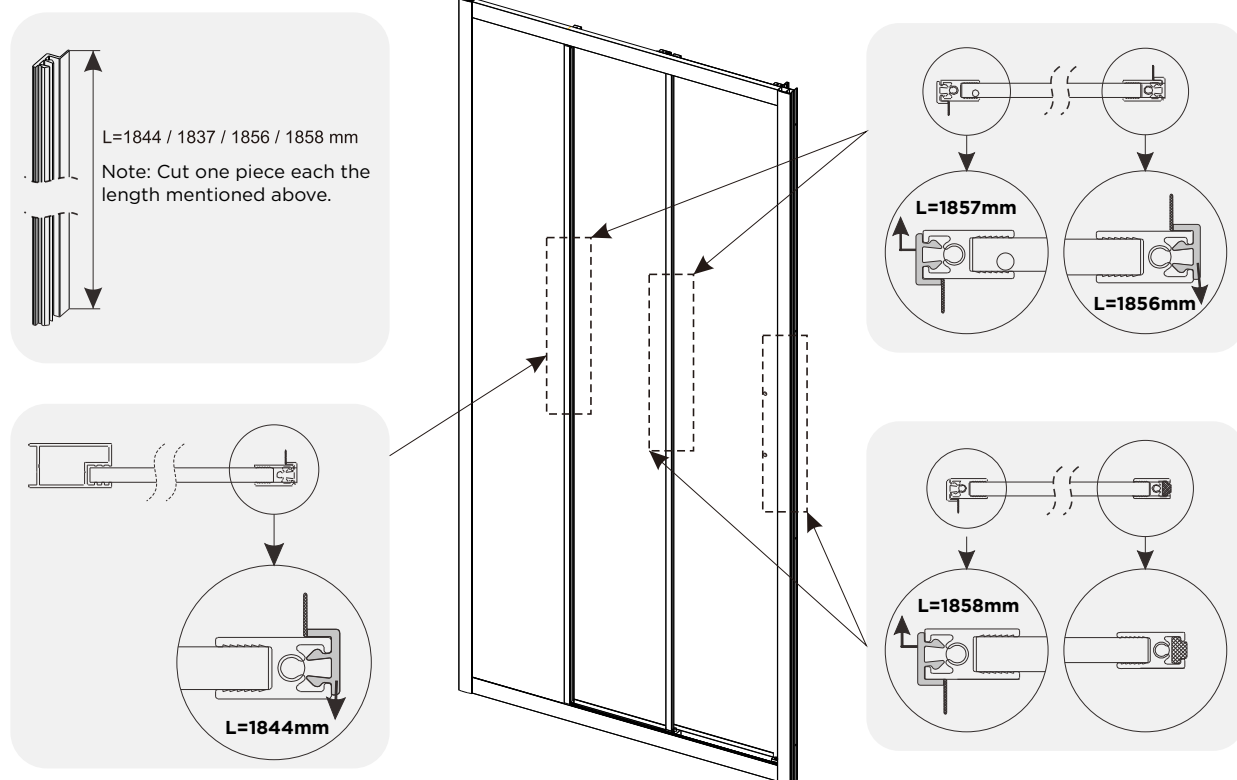
9



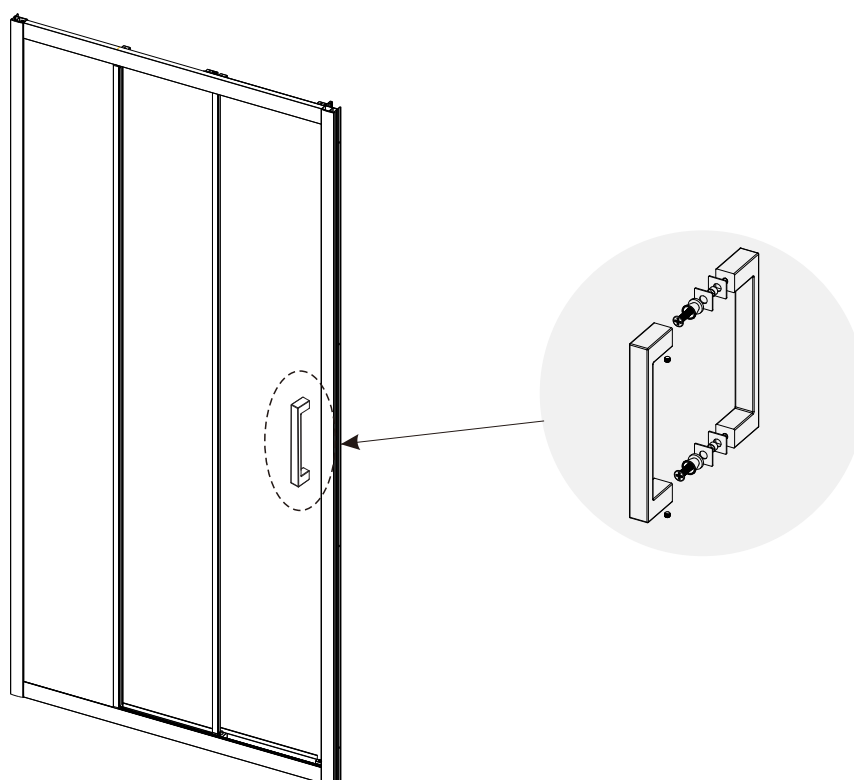
10



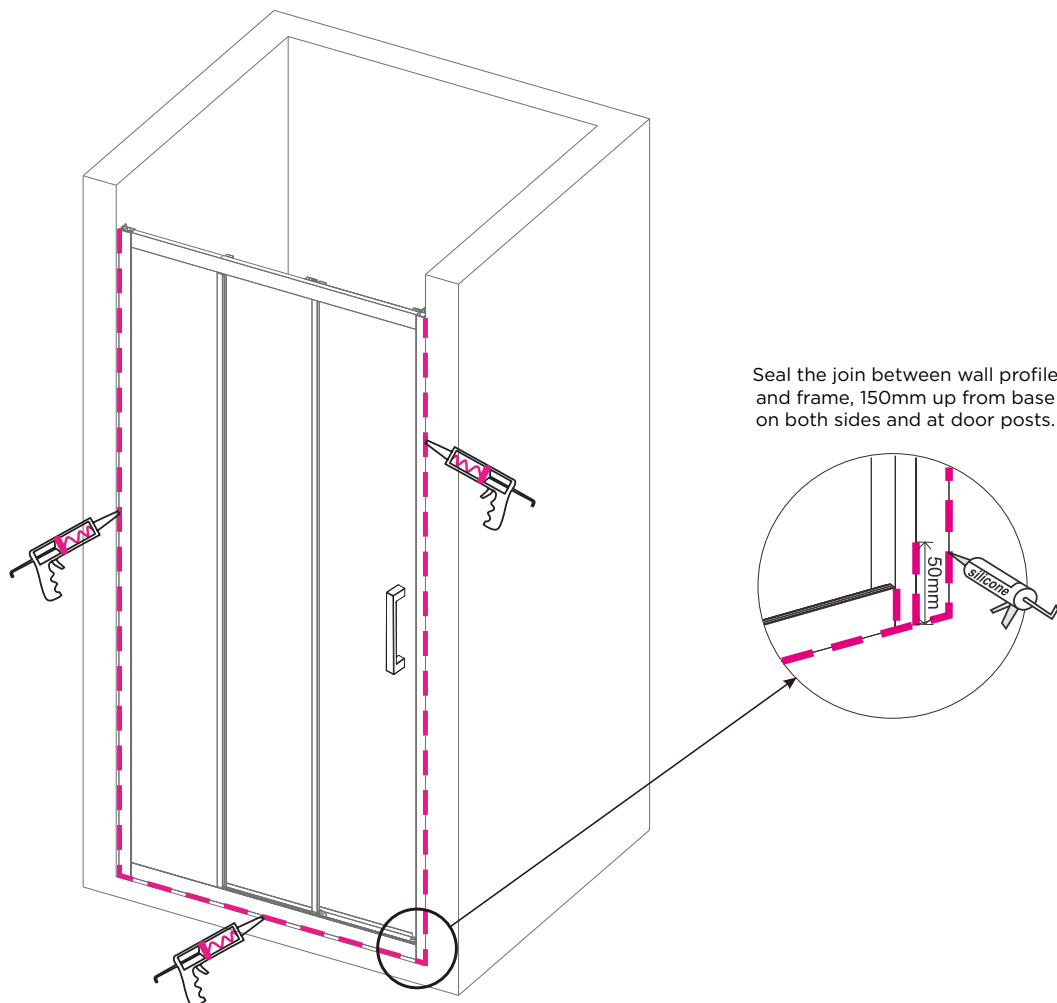
11



12



13 APPLY SILICONE TO OUTER JOIN AS INDICATED.



Allow 24 hours for silicone to dry before use.