

INDEX	PAGE
2-Sided Shower	5-8
3-Sided Shower	9-13

## Important

1. When you receive your product check the contents for any freight damage or defects.
2. If this is a custom order, the size will be on the outside of the box. Check that it is correct.
3. Advise Marni on 0800 4 MARNI if any damage has occurred or if you have any questions about the size within 8 hours of receiving the goods so this can be rectified.
4. Do not install faulty products, as this will void your warranty.



## Health and Safety

- Unpack glass, stand on soft packing on floor and walls prior to assembly.
- Do not rework glass panels.
- Do not strike an edge or corner of glass.
- Use two persons where heavy glass lifting is required.
- Wear appropriate protective clothing and eye protection during installation.
- Mark gas/water pipe and electrical wire locations to ensure these are not touched.



## Attention

- **The tray base** must be installed level as this affects all shower alignments.
- **Wall Specifications** require a max variation of 3mm within shower height.  
Installer must check the viability of install if outside of these specs.
- **3-Sided Alcove Showers:** Wall must be accurate, straight, and plumb. Refer pre-install guide.
- **Double studs for solid fixing of wall channels:** Positioned at tray outside edge



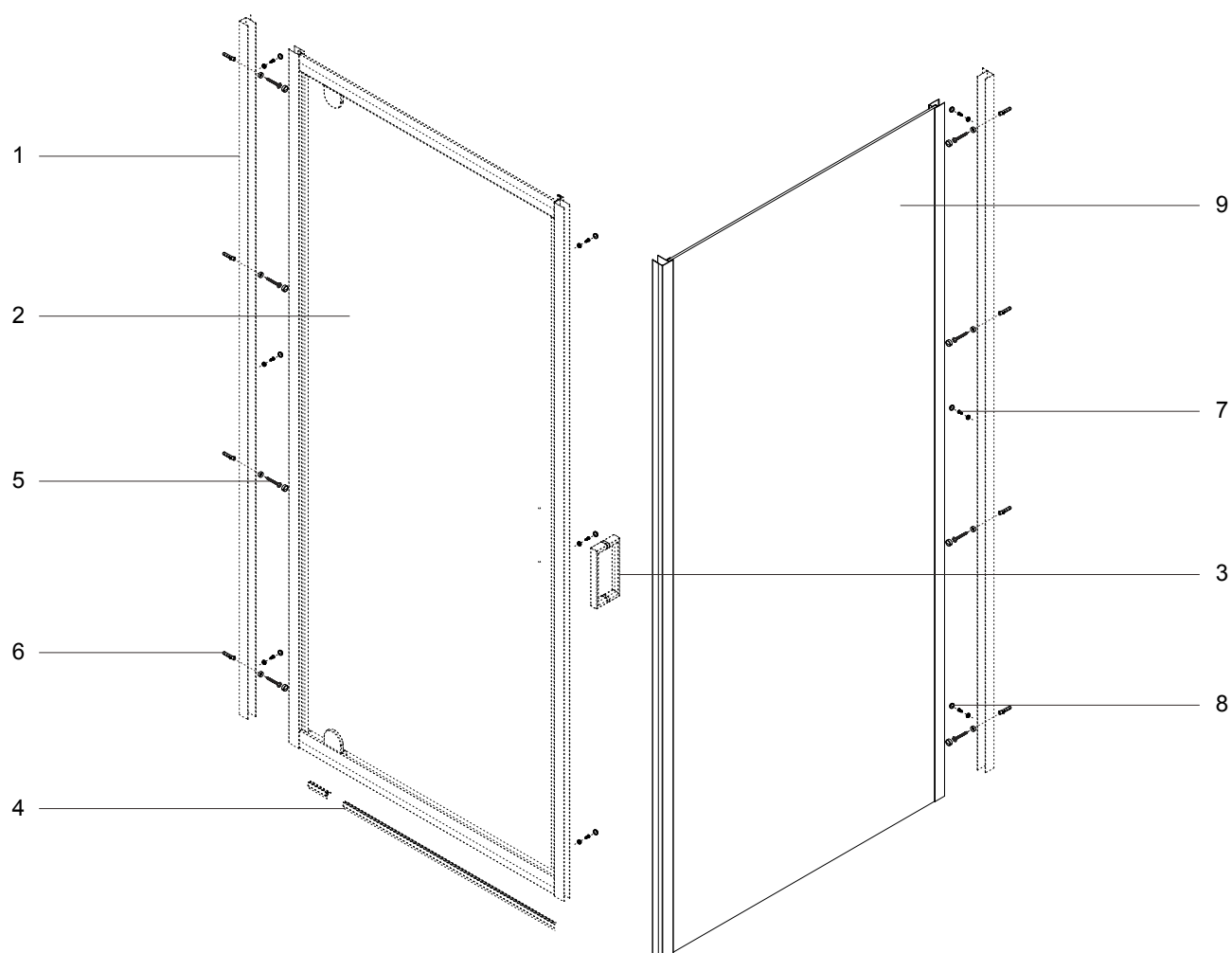
## Tools Required



## Warranty

- This covers faulty goods but not breakages. Visit [marni.nz](http://marni.nz) for information.
- Compliance with Specs and these instructions are essential for a valid warranty.

**We recommend a skilled tradesman acquainted with shower installations to ensure the very best outcome.**



## COMPONENTS LIST

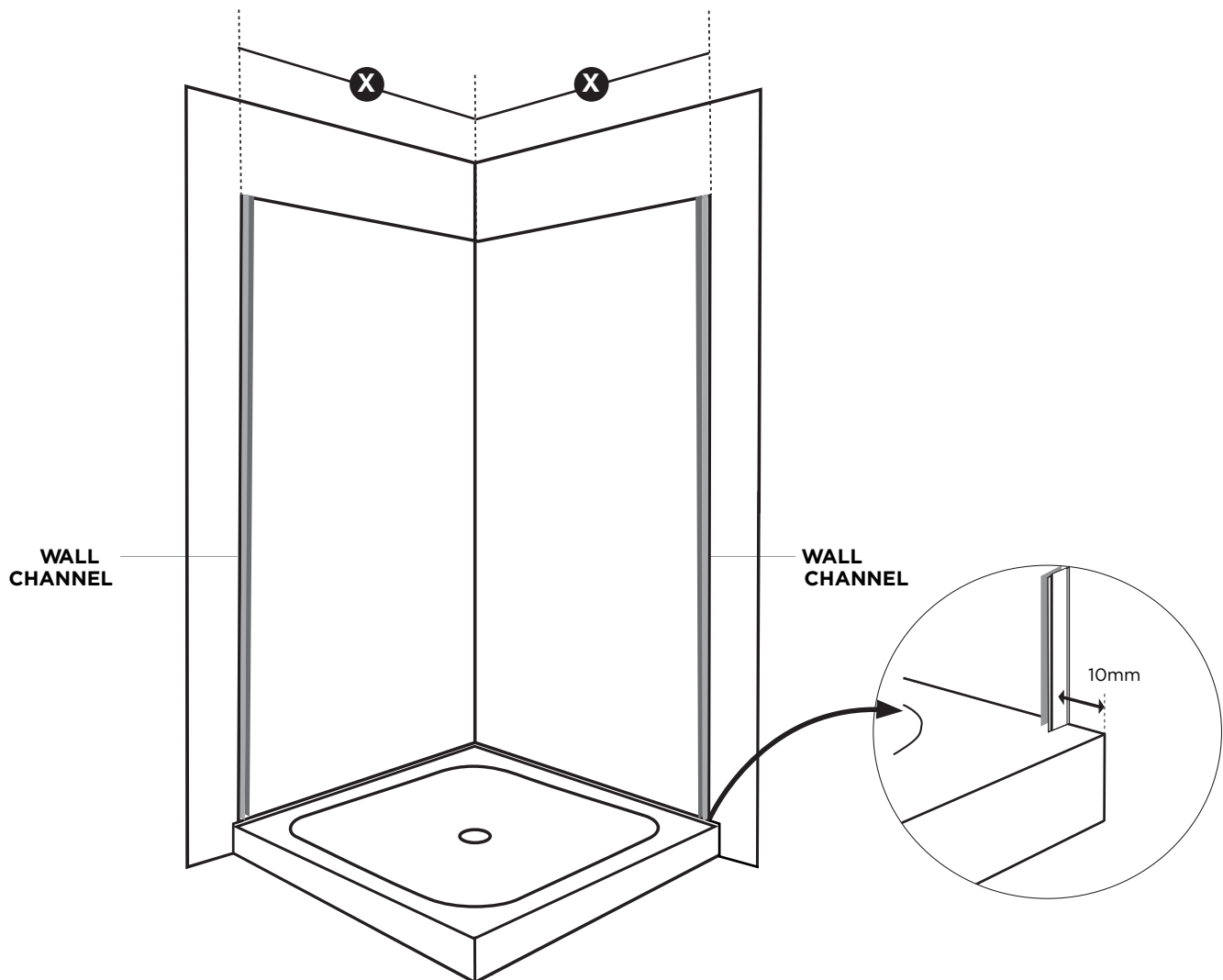
REFERENCE	DESCRIPTION	QUANTITY
1	Wall Channels	2
2	Door Panel	1
3	Handle	1
4	Bottom Seal	1
5	Wall Jamb Screws ST4x30mm	8
6	Wall Plug	8
7	Frame to Wall Channel Screws ST4x10mm	9
8	Screw Cap	17
9	Return Panel	1

\*Code for Replacement Screw Pack - 2 & 3 Sided Chrome & White

SHOWER TYPE	FRONT PANEL (A) MIN/MAX	RETURN PANEL (B) MIN/MAX
900 x 900 Square (2 Sided)	870mm to 895mm	870mm to 895mm
1000 x 1000 Square (2 Sided)	970mm to 995mm	970mm to 995mm

**NOTE:** Make sure the correct shower is used on the correct tray.

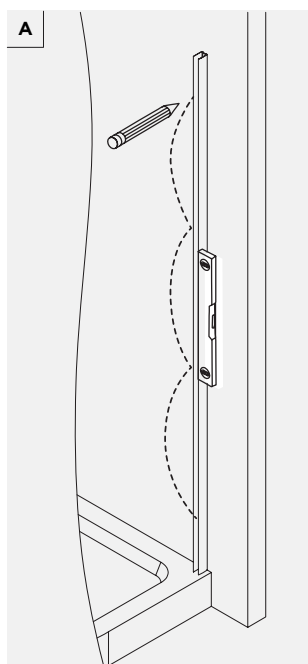
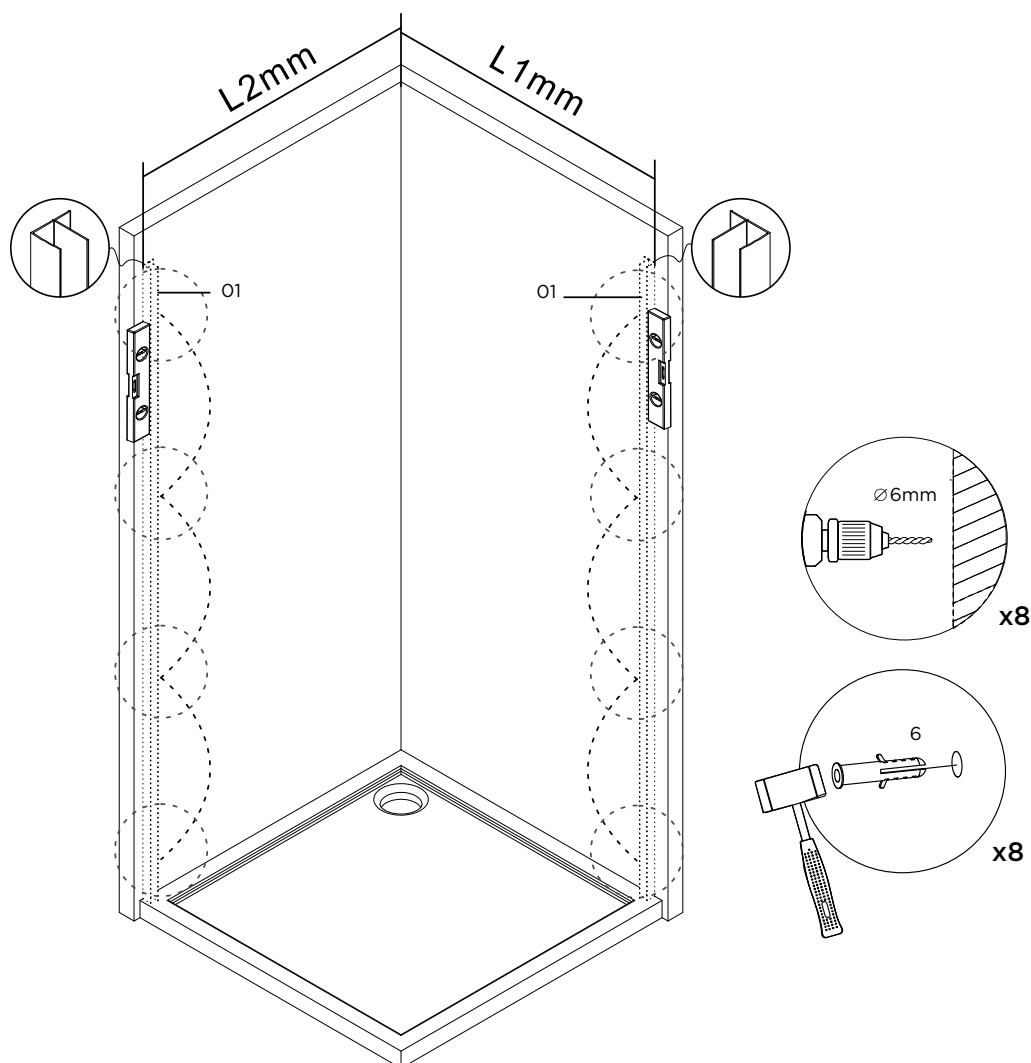
Walls out of plumb will not allow for full minimum / maximum options.



- Mark out the wall channels 10mm off acrylic tray edge.
- If the tray is not level or walls are out of plumb protruding or curving inwards more than 4mm recalculation of this position as required. Use the Min to Max Table above.
- Plumb and mark the boundary lines of wall channels and predrill a 2mm lead hole in the liner.
- Apply a continuous 7mm bead of silicone on the back of channel, fasten to wall ensuring these remain plumb.



1

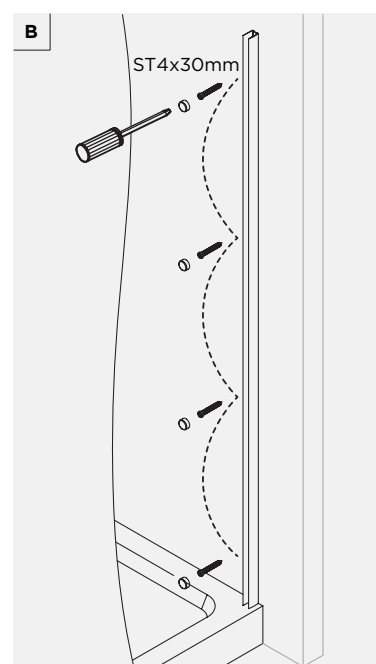


Mark Wall Profile

### Acrylic Shower Layout

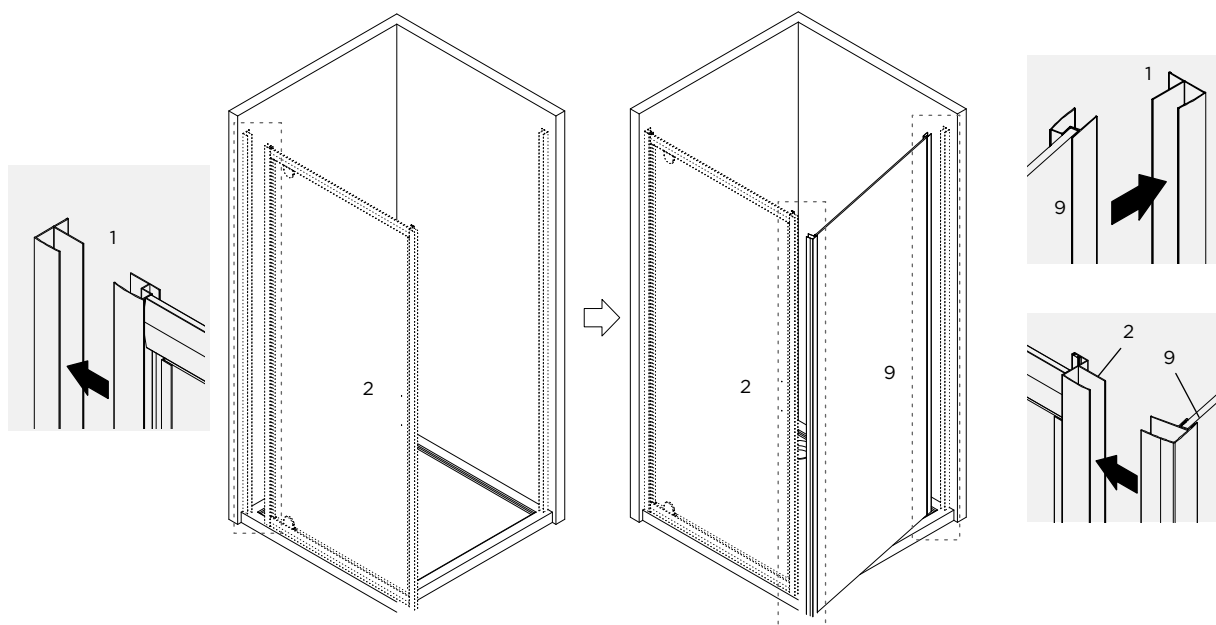
Position the wall channels at 10mm off the tray edge as diagram above. This allows for walls bowed or leaning inwards up to 4mm. Reduce the measurement off the tray edge if walls dictate this.

**Refer to table above.**

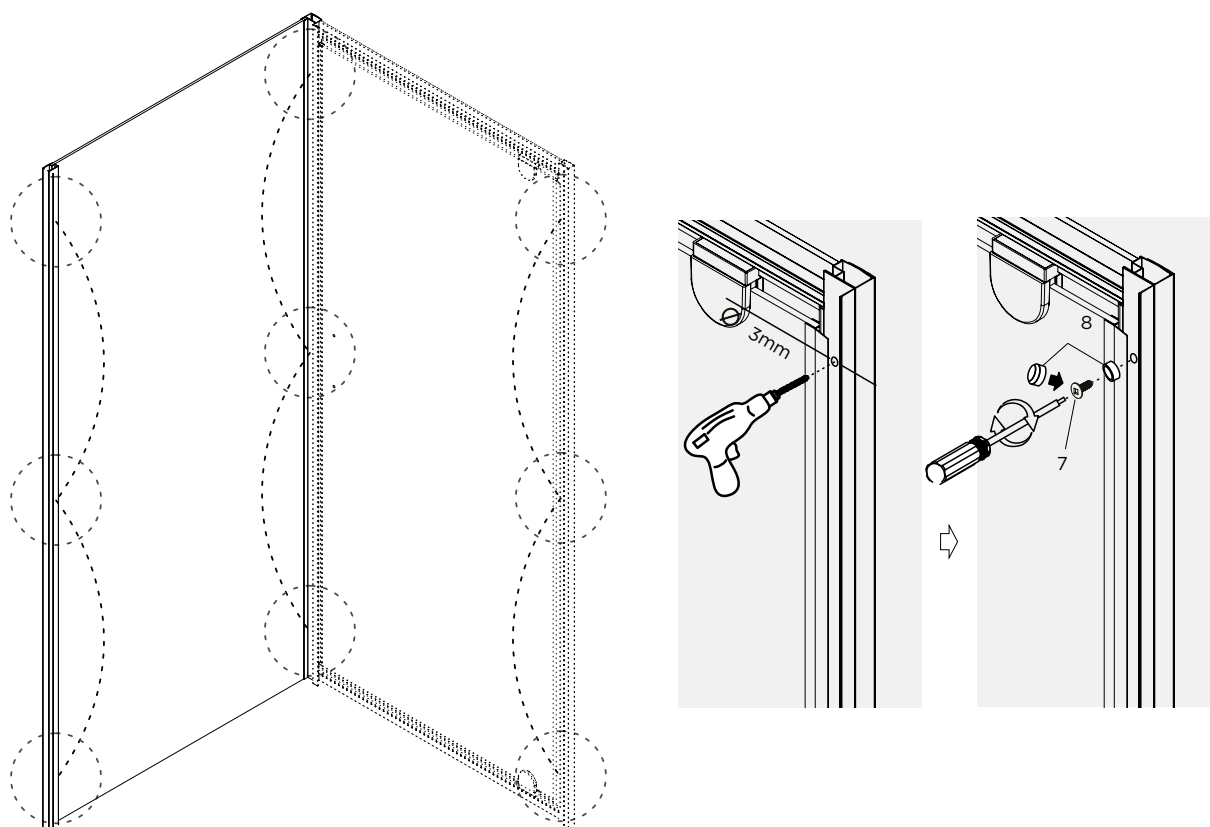


Fasten Profile to wall.

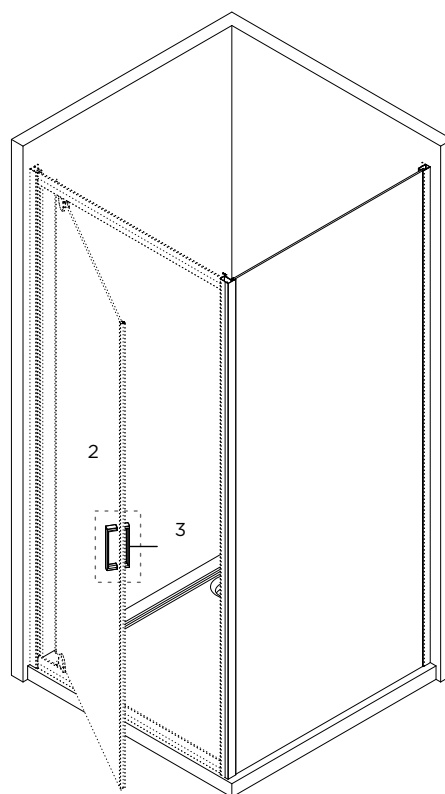
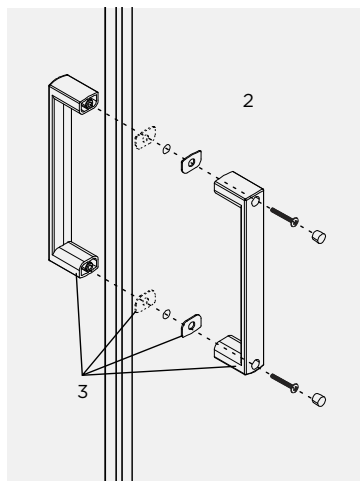
2



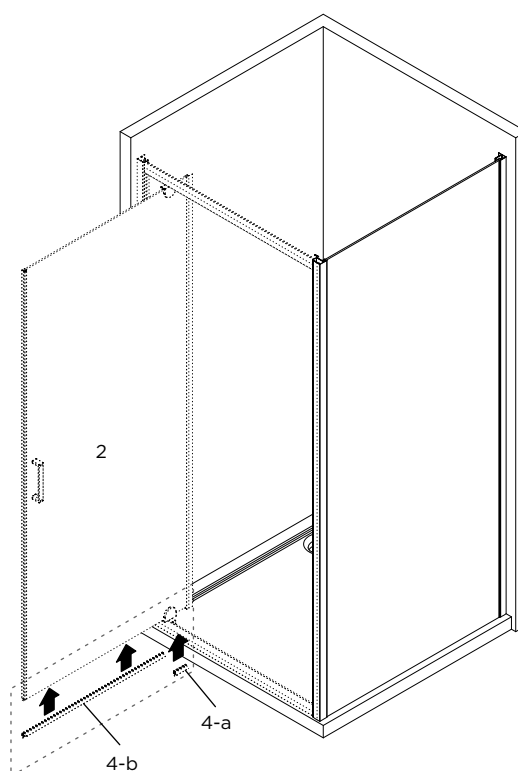
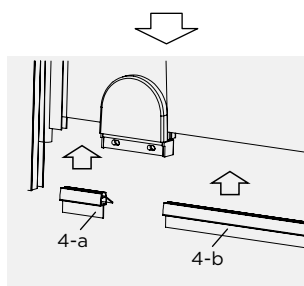
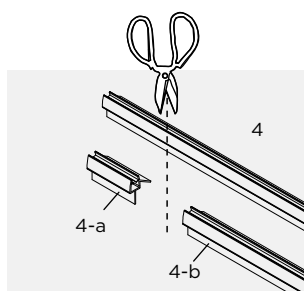
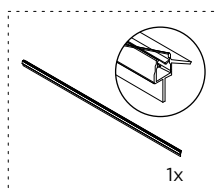
3



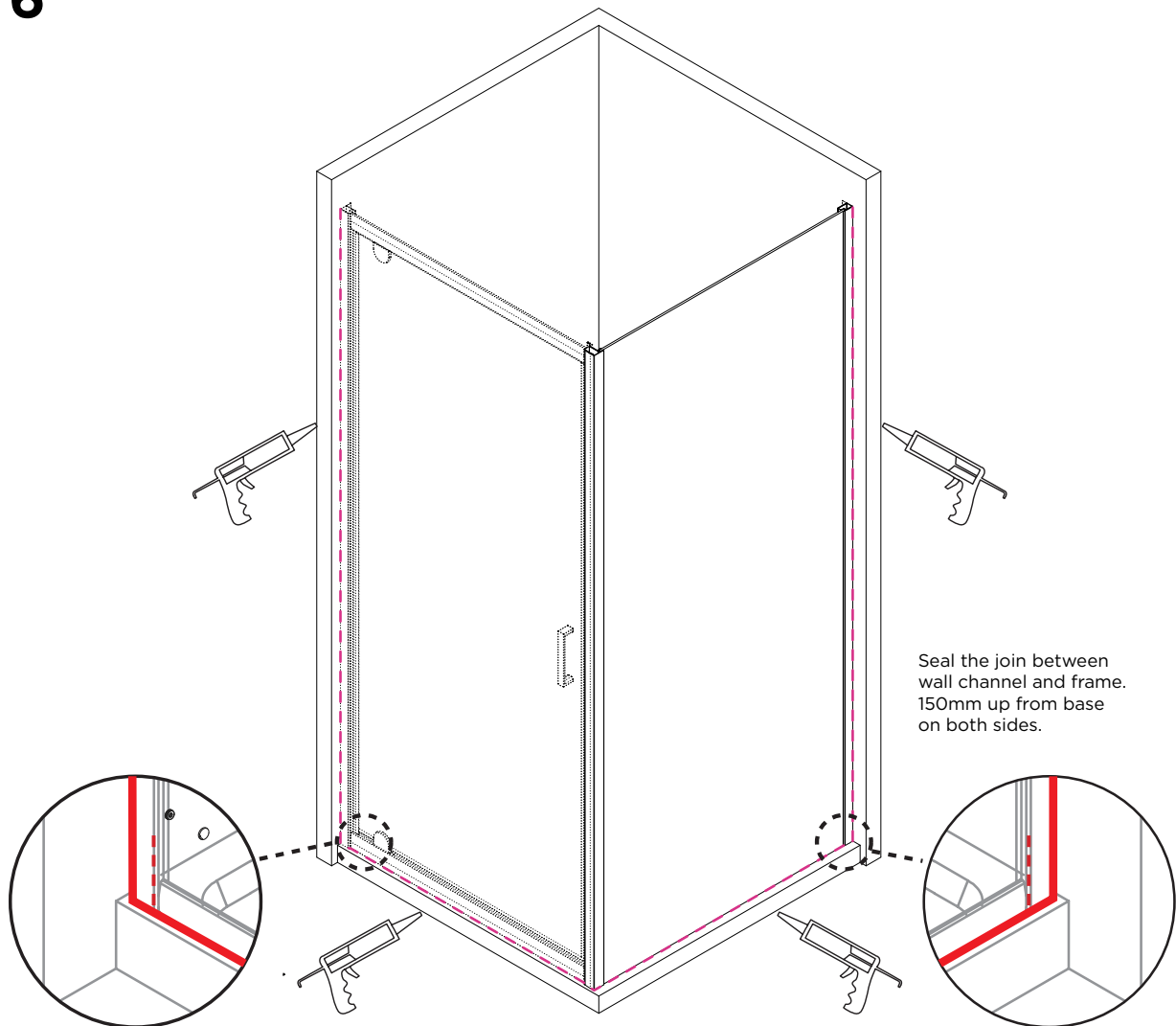
4



5



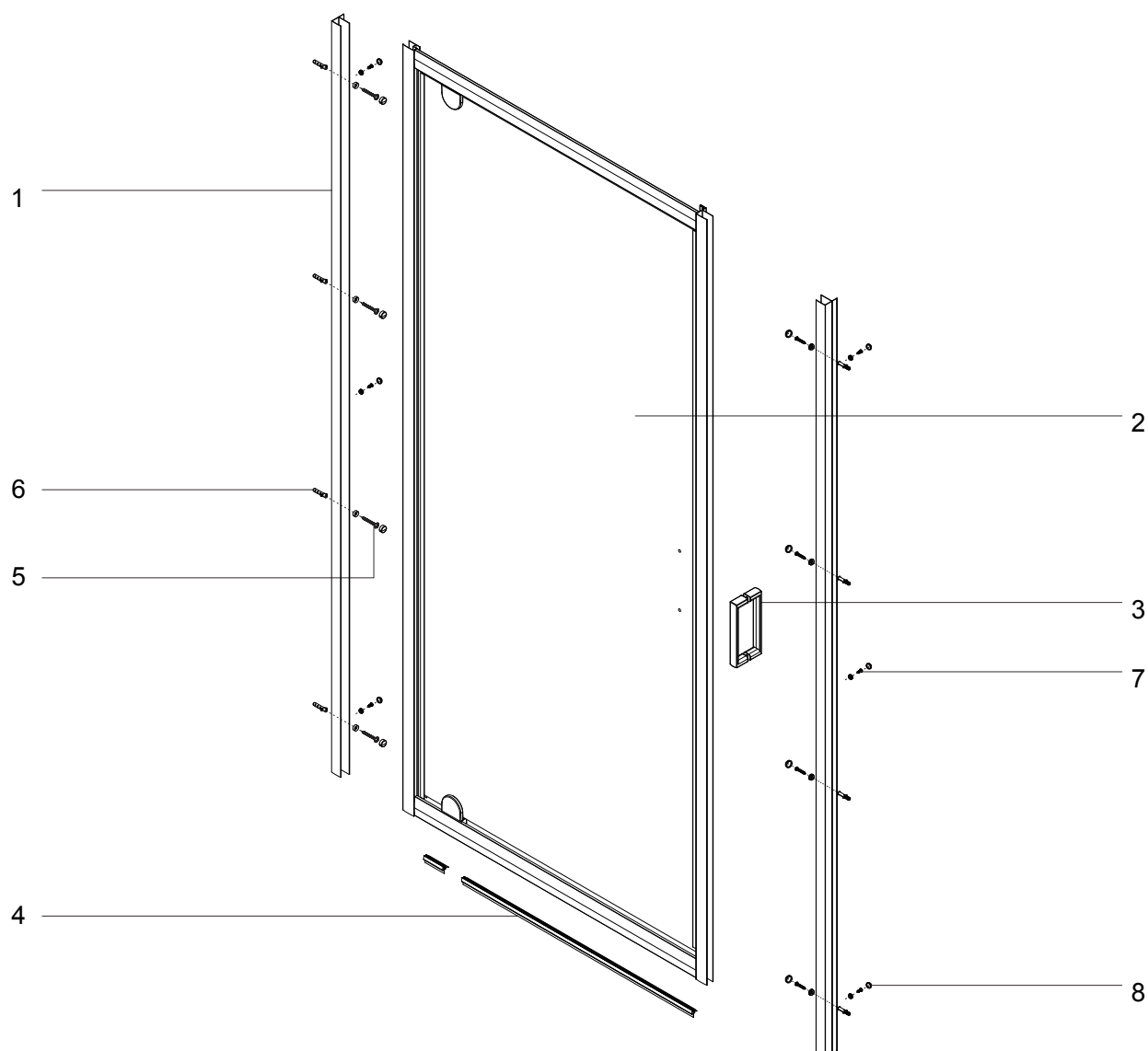
6



**Allow 24 hours for silicone to dry before use.**

Silicone is not used on the inside of the shower screen because water can build up over time within the wall channel and leak out of the shower area. The screen is designed to allow the water to return into the shower area, if any is present.

**SCREENS THAT ARE SEALED ON THE INSIDE WILL VOID WARRANTY.**

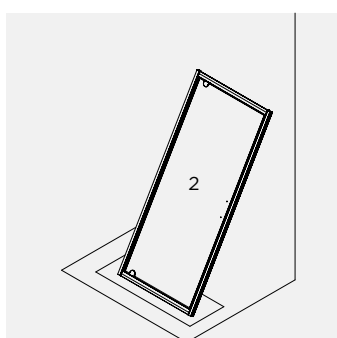
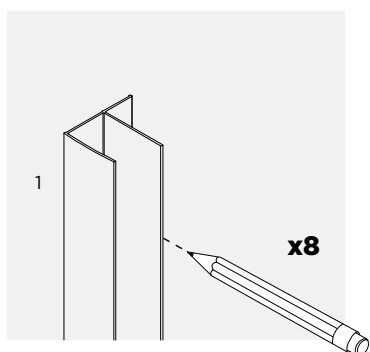
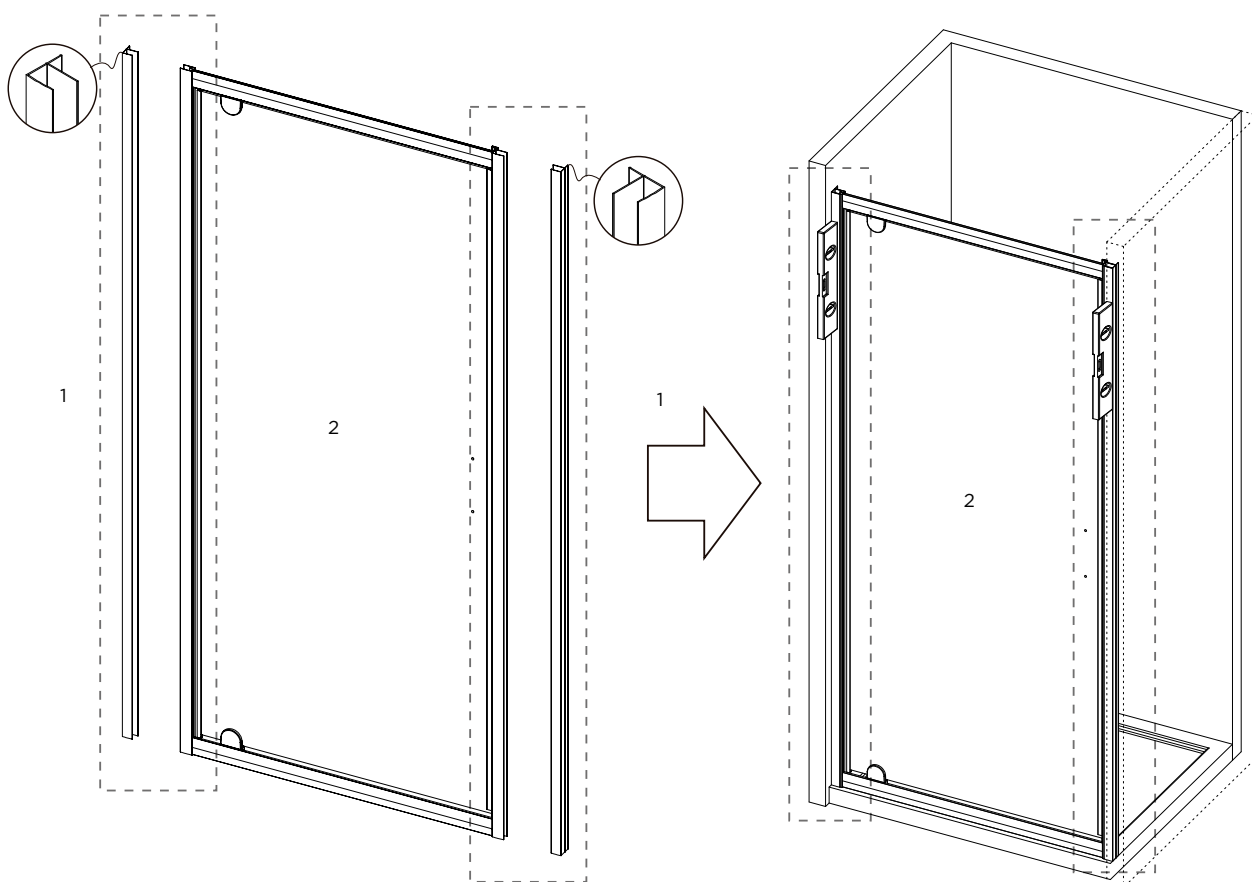
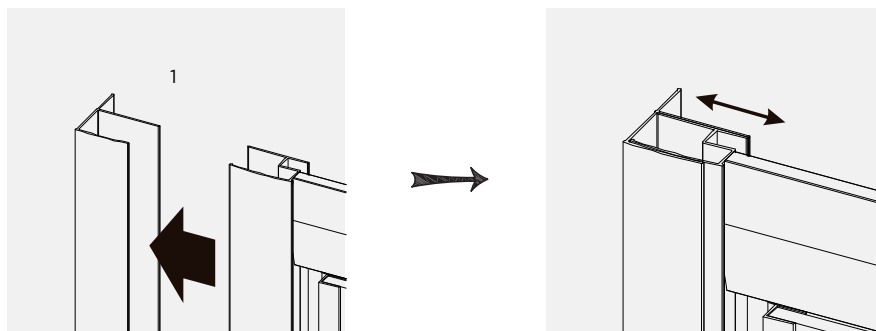


## COMPONENTS LIST

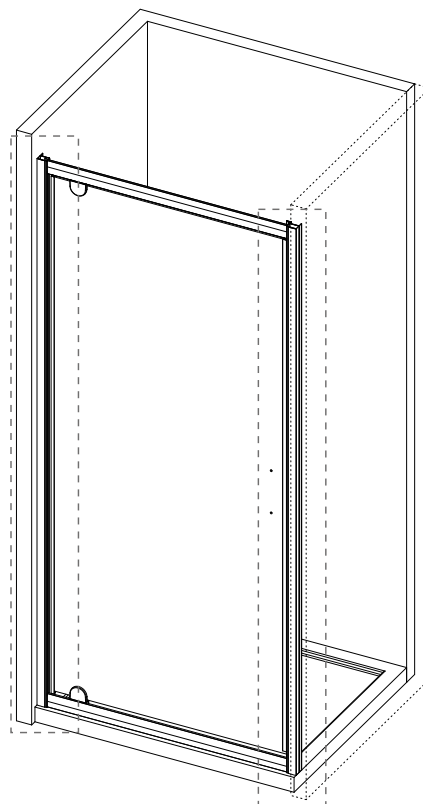
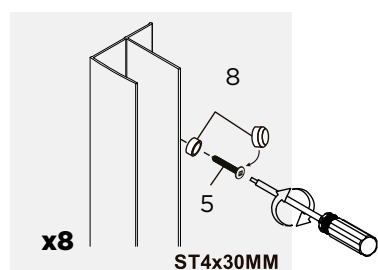
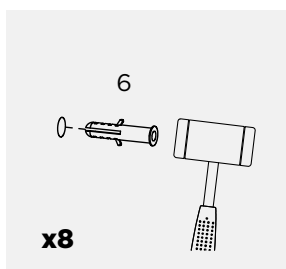
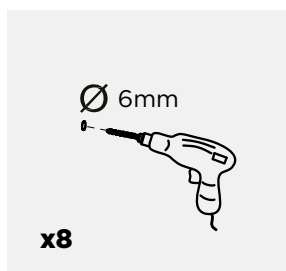
REFERENCE	DESCRIPTION	QUANTITY
1	Wall Channels	2
2	Door Panel	1
3	Handle	1
4	Bottom Seal	1
5	Wall Jamb Screws ST4x30mm	8
6	Wall Plug	8
7	Frame to Wall Channel Screws ST4x10mm	9
8	Screw Cap	17

\*Code for Replacement Screw Pack - 2 & 3 Sided Chrome & White

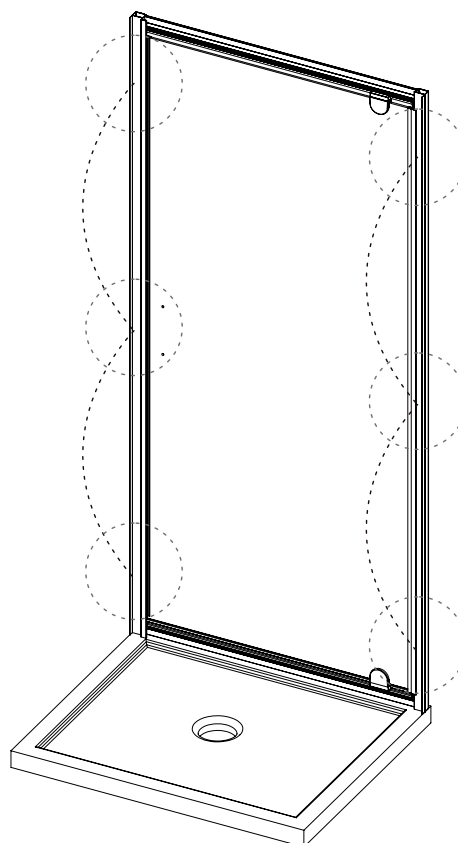
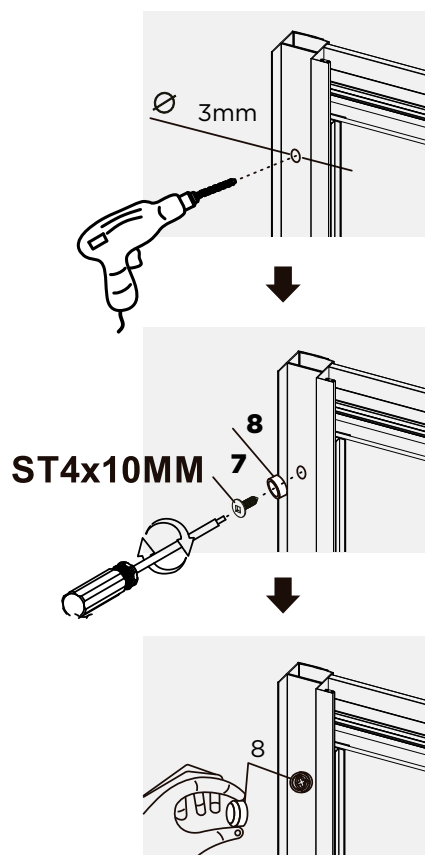
1



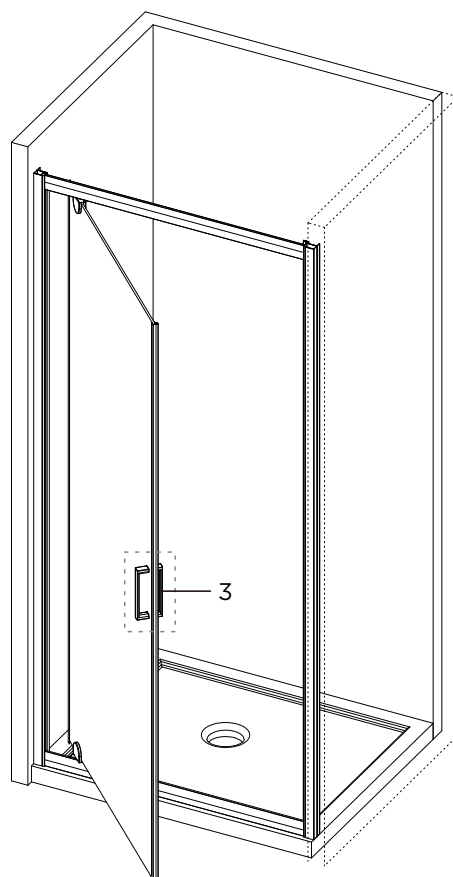
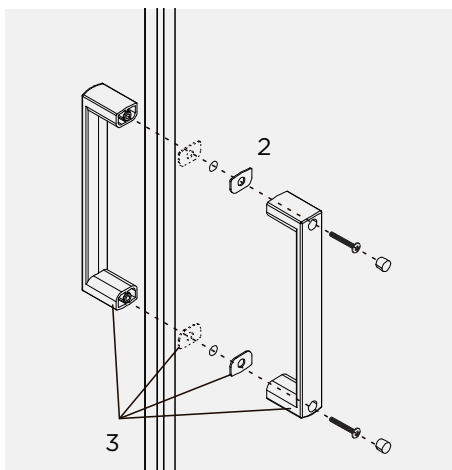
2



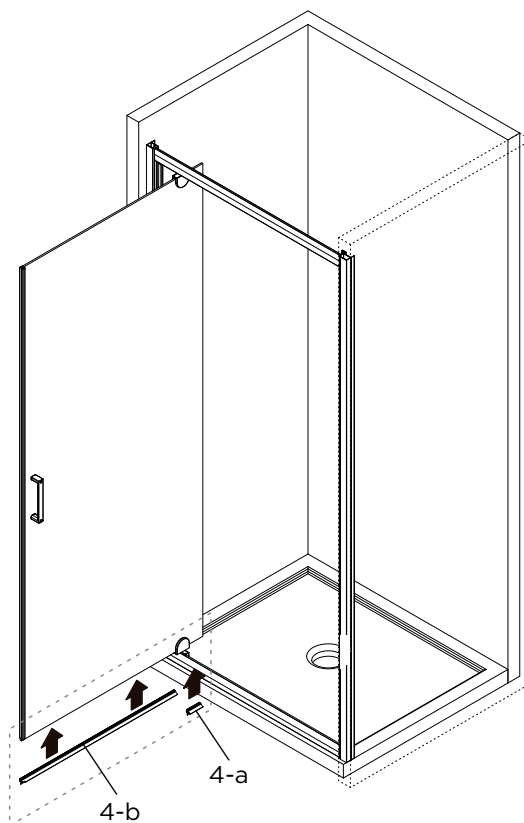
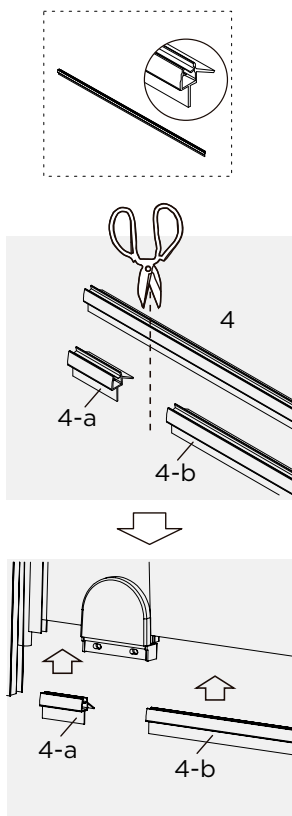
3



4

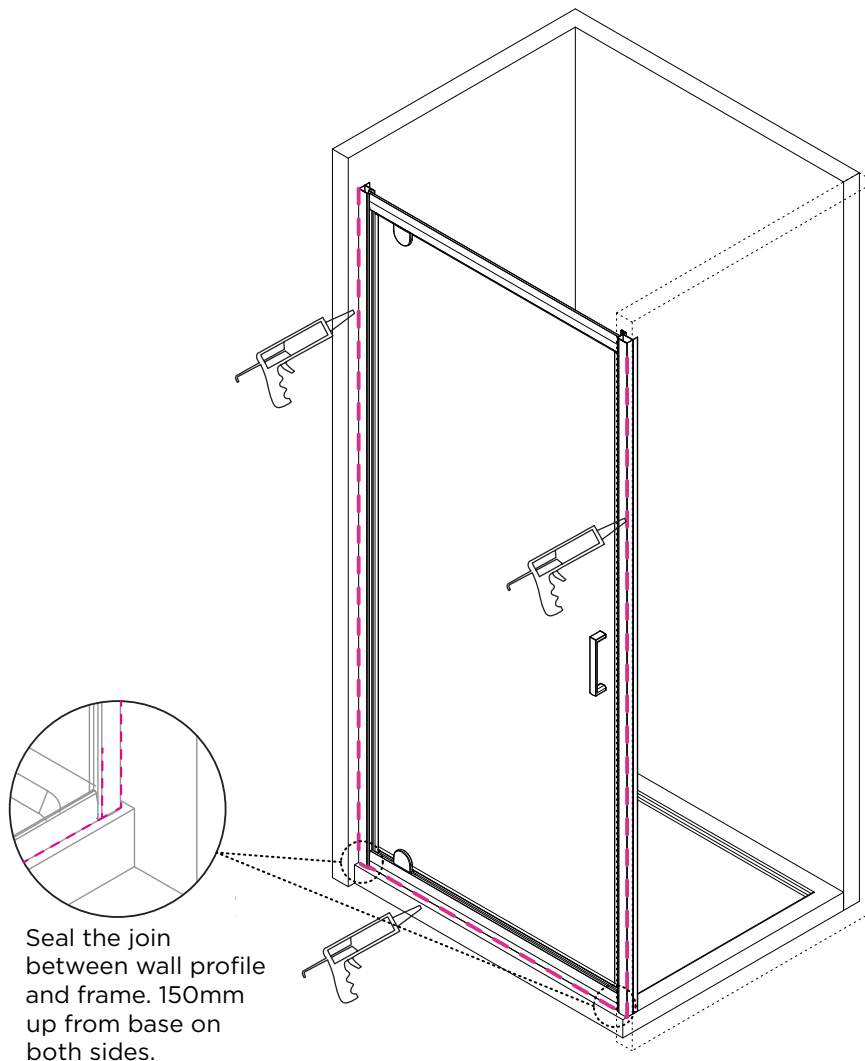


5





6



**Allow 24 hours for silicone to dry before use.**